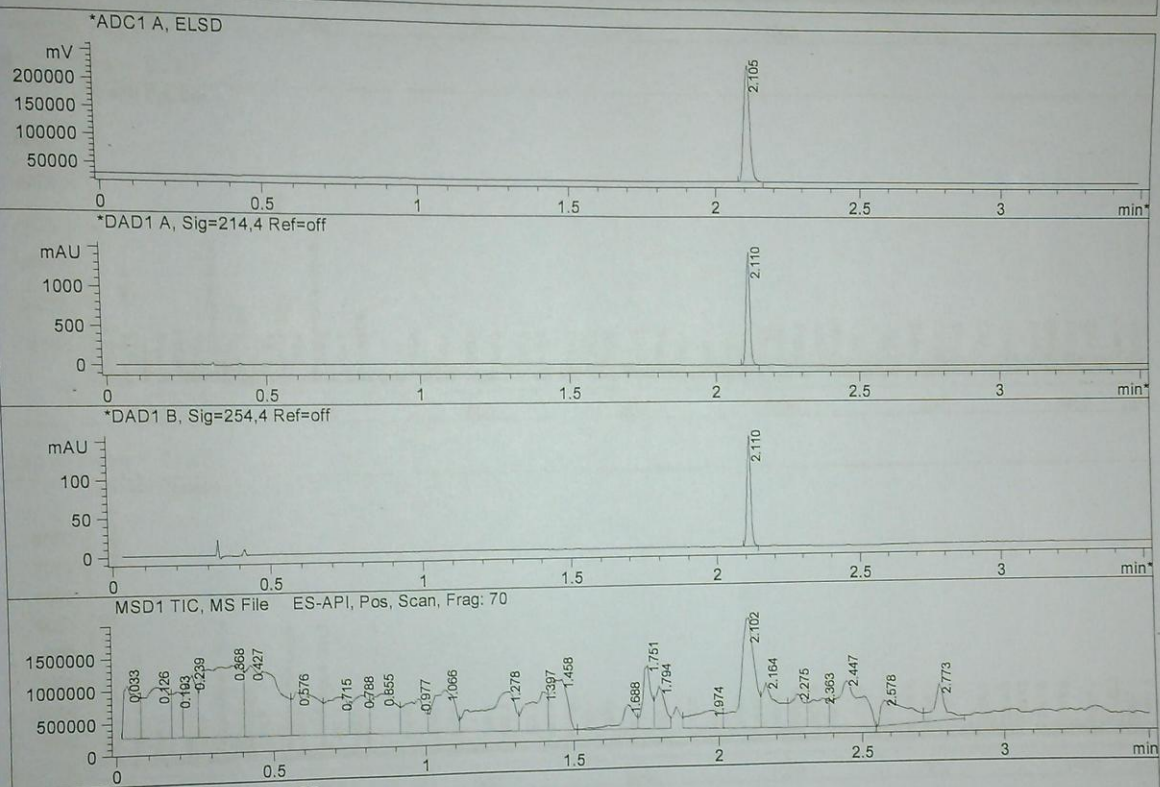


File D:\DATA  
 Acq. Method : C:\Chem32\1\METHODS\1-POS-3MIN-MS1500.M  
 Analysis Method : C:\Chem32\1\METHODS\1-POS-3MIN-MS1500.M  
 Sample Info : \*\*\* No target masses specified \*\*\*  
 Method Info : Mobile Phase: A: water(10mM Ammonium hydrogen carbonate) B: ACN  
 Gradient: 5%-95% B in 1.6min  
 Flow Rate: 2.0ml/min  
 Column: XBridge C18,4.6\*50mm,3.5um  
 Oven Temperature: 40 C  
 MS Range: 110-1500



Integration Results for ADC1 A, ELSD

RetTim	Width	Area	Height	Area%
2.10	0.02	322138.59	223305.50	100.00

Integration Results for DAD1 A, Sig=214,4 Ref=off

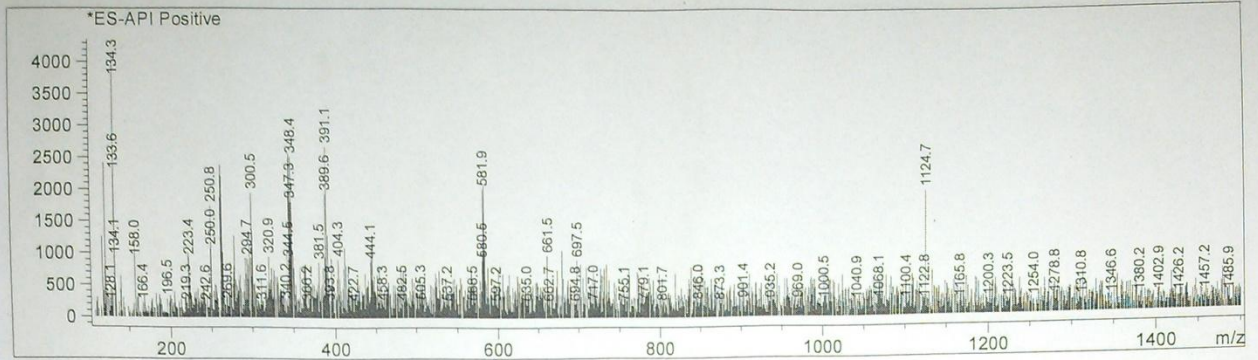
RetTim	Width	Area	Height	Area%
2.11	0.01	1431.53	1516.85	100.00

Integration Results for DAD1 B, Sig=254,4 Ref=off

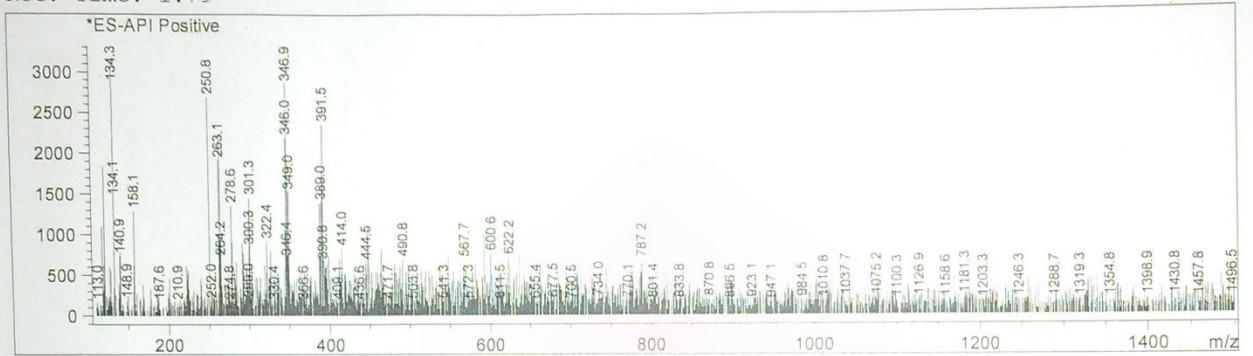
RetTim	Width	Area	Height	Area%
2.11	0.01	140.27	150.01	100.00

C/MS Report

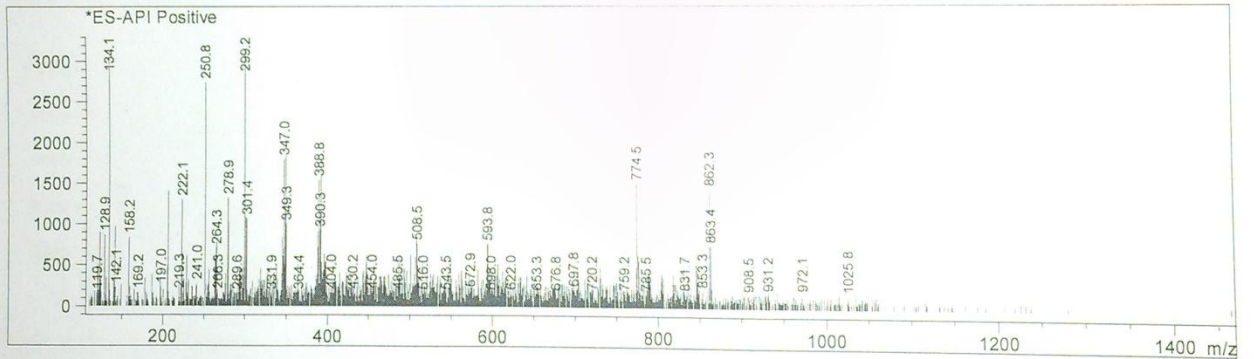
Ret. Time: 1.75



Ret. Time: 1.79



Ret. Time: 1.97



Ret. Time: 2.10

