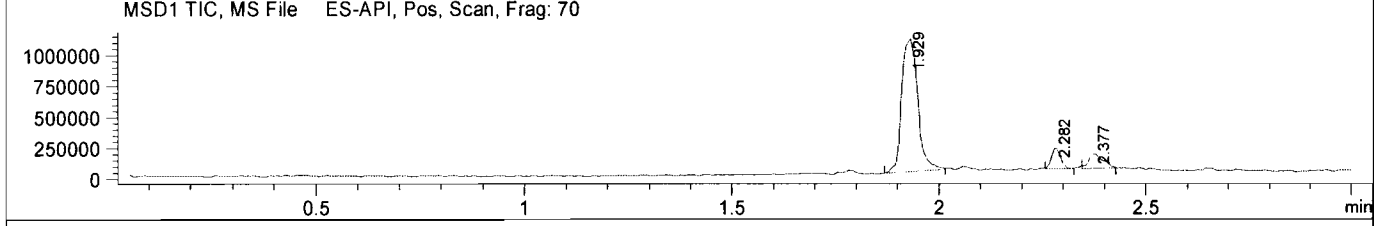
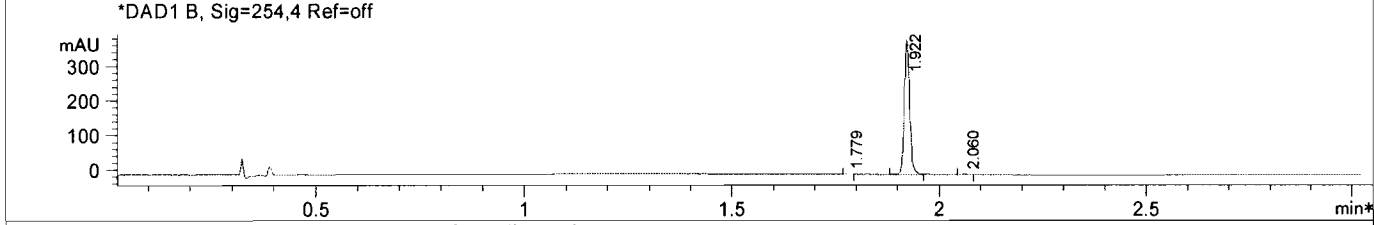
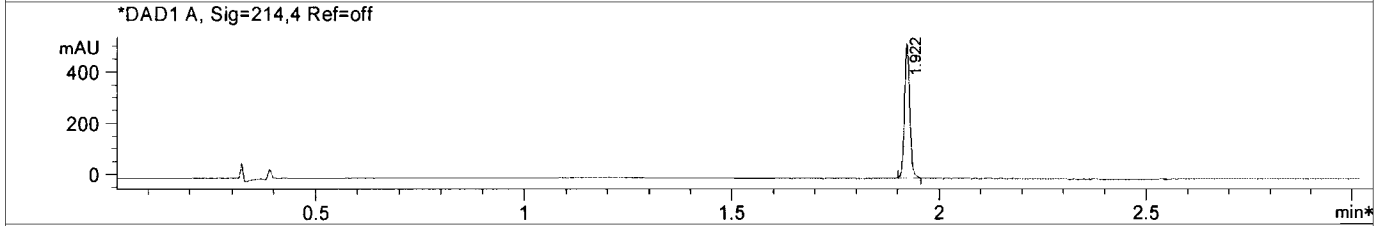
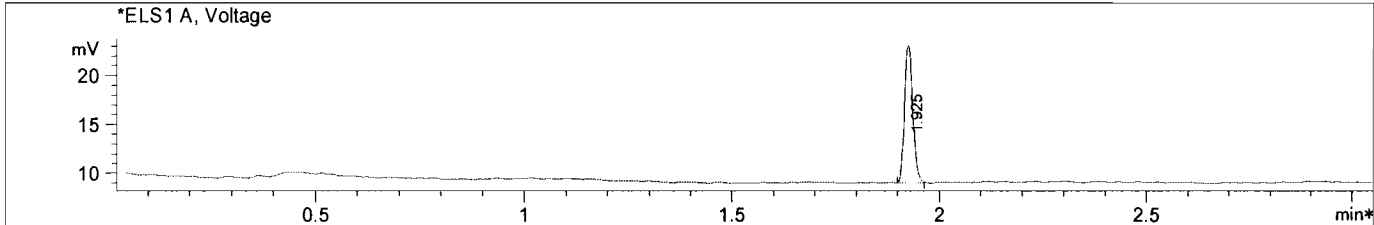


LC/MS Report

File D:\DATA\MONITOR\ku0063794-LCMS.D
 Injection Date : 27 Nov 12 7:23 pm +0800 Tgt Mass (EZX) :
 Sample Name : ku0063794 Location : P1-C-05
 Acq. Operator : LCMS Inj : 1
 Spec. Reported : MS Integration Inj Volume : 2 ul
 Acq. Method : C:\Chem32\1\METHODS\1-POS-3MIN.M
 Analysis Method : C:\Chem32\1\METHODS\1-POS-3MIN.M
 Sample Info : *** No target masses specified ***
 Method Info : Mobile Phase: A: water(10mM Ammonium hydrogen carbonate) B: ACN
 Gradient: 5%-95% B in 1.5min
 Flow Rate: 2.0ml/min
 Column: XBridge C18,4.6*50mm,3.5um
 Oven Temperature: 40 C
 MASS Range:110-800



Integration Results for ELS1 A, Voltage

RetTim	Width	Area	Height	Area%
1.92	0.02	19.68	14.13	100.00

Integration Results for DAD1 A, Sig=214,4 Ref=off

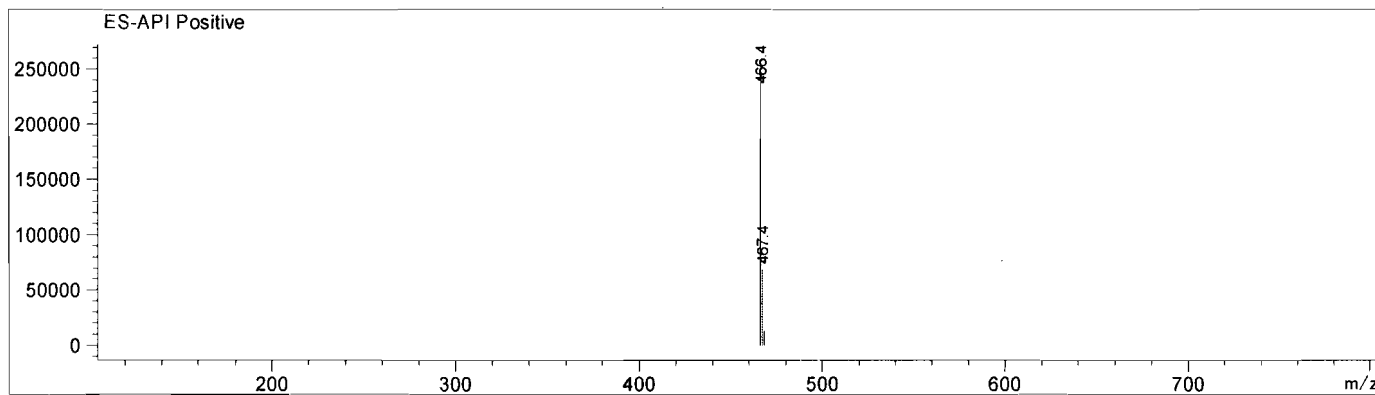
RetTim	Width	Area	Height	Area%
1.92	0.01	471.32	528.67	100.00

Integration Results for DAD1 B, Sig=254,4 Ref=off

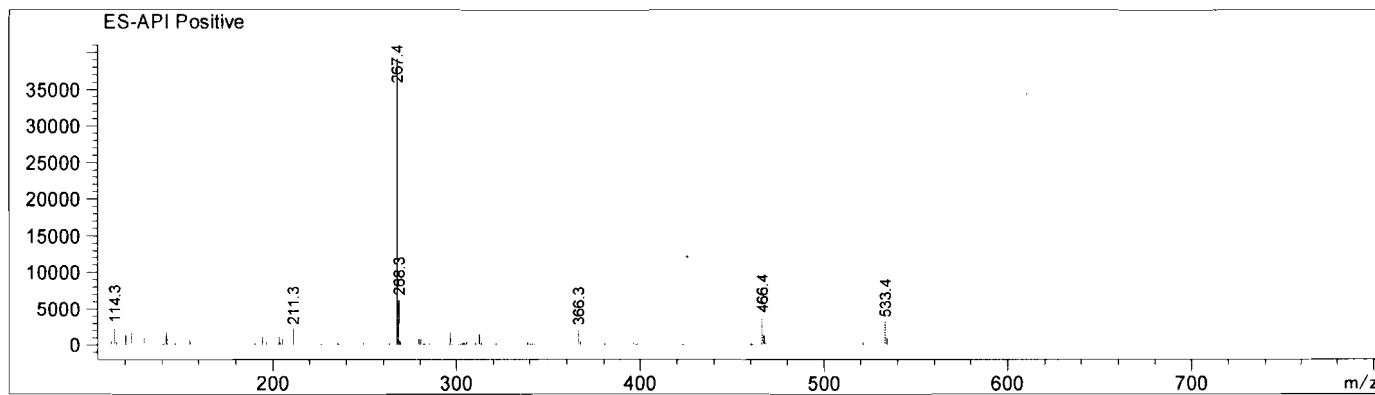
RetTim	Width	Area	Height	Area%
1.78	0.01	0.83	1.29	0.24
1.92	0.01	348.92	388.25	99.40
2.06	0.01	1.28	1.48	0.37

LC/MS Report

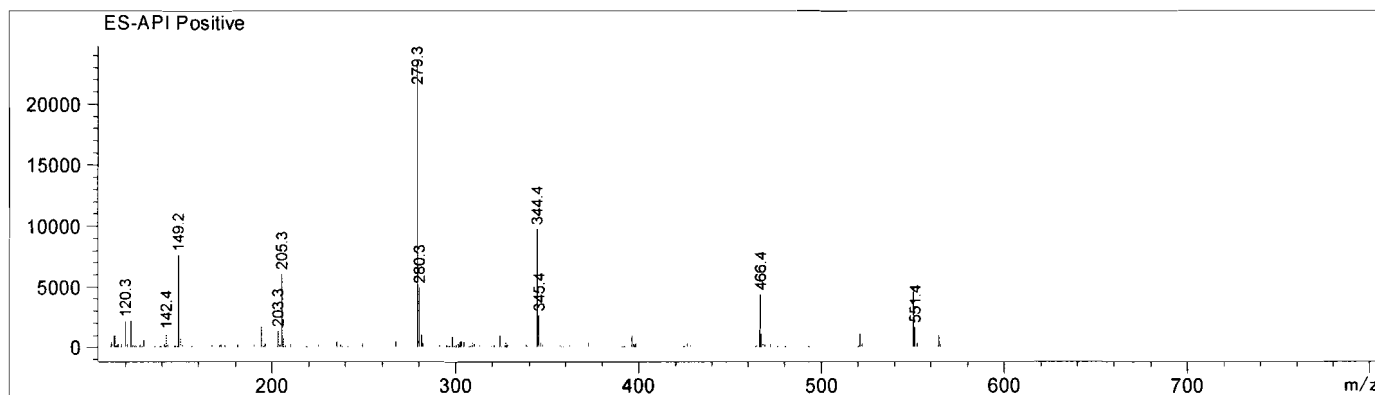
Ret. Time: 1.93 <<<< POSITIVE SPECTRA >>>>



Ret. Time: 2.28



Ret. Time: 2.38



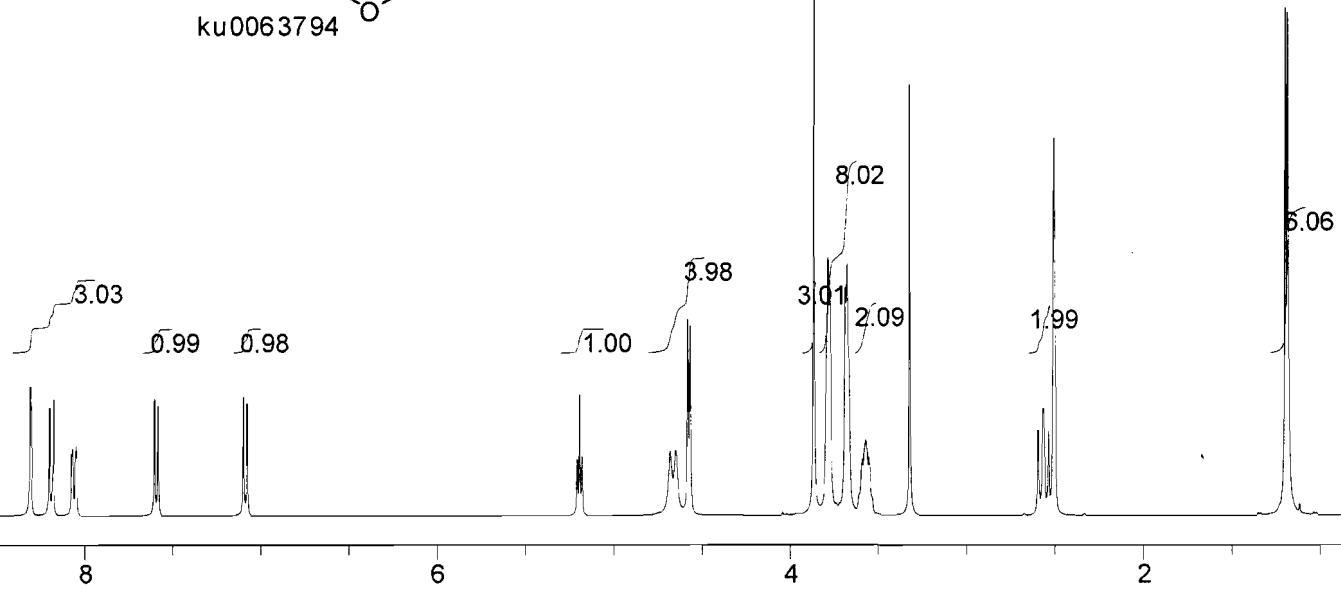
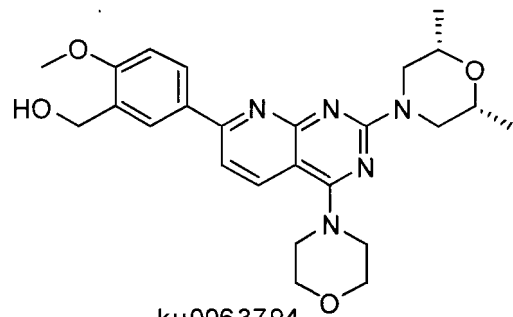
8.308
8.305
8.200
8.178
8.072
8.067
8.050
8.046
7.602
7.581
7.098
7.076

5.208
5.194
5.180
4.682
4.651
4.582
4.569

3.865
3.783
3.771
3.686
3.675
3.594
3.589
3.578
3.570

3.563
3.553
3.548
3.321
2.594
2.566
2.562
2.534
2.502
1.192
1.177

-0.001



NMRB003, DMSO,

USER: nmrB601 -- DATE: Tue Nov 27 11:10:49 2012

F1: 400.132

F2: 1.000

SW1: 8224

OF1: 2474.4

PTS1d: 32768

EX: zg30

PW: 13.8 usec

PD: 1.0 sec

NA: 32

LB: 0.0

Nuts - \$pdata