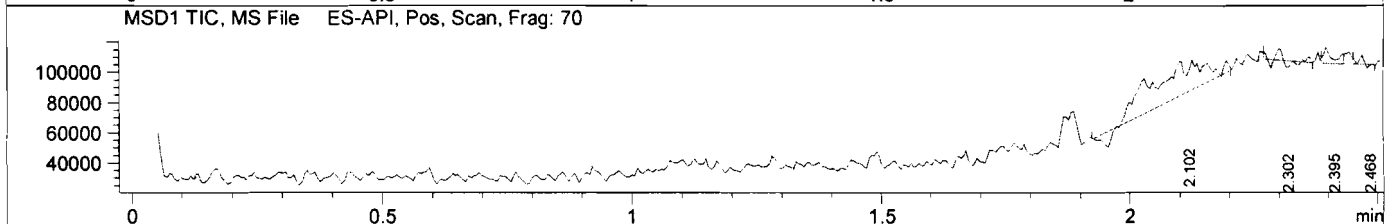
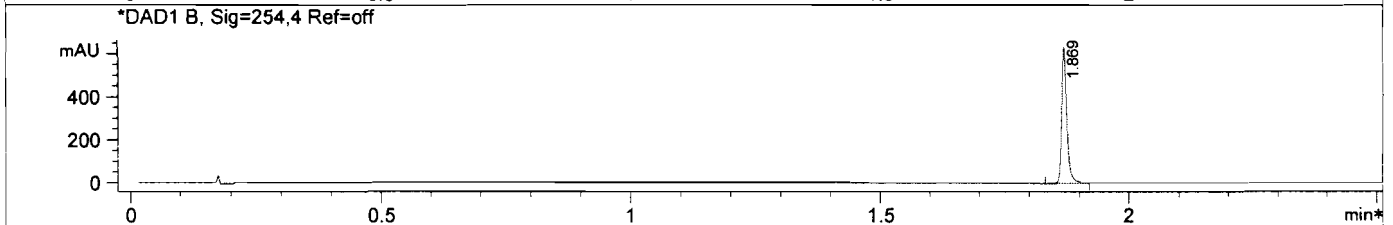
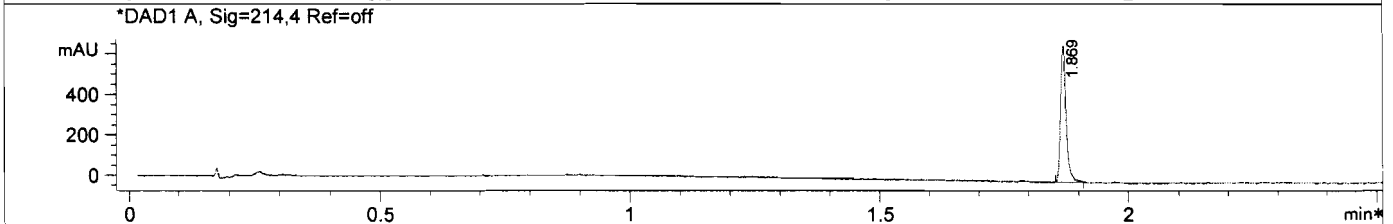
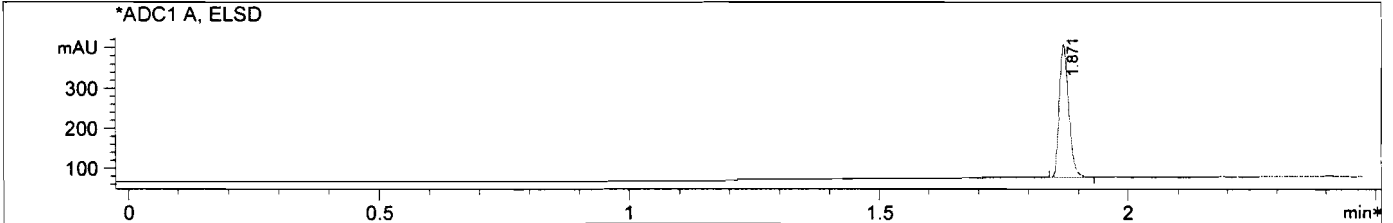


LC/MS Report

File D:\DATA\MONITOR\Eltrombopag-LCMS.D
 Injection Date : 6 Jan 13 2:34 pm +0800 Tgt Mass (EZX) :
 Sample Name : Eltrombopag Location : P2-A-06
 Acq. Operator : LCMS Inj : 1
 Spec. Reported : MS Integration Inj Volume : 1 ul
 Acq. Method : D:\METHODS\1-POS-3MIN.M
 Analysis Method : D:\METHODS\1-POS-3MIN.M
 Sample Info : *** No target masses specified ***
 Method Info : Mobile Phase: A: water(0.01%TFA) B: ACN(0.01%TFA)
 Gradient: 5%-95% B in 1.2min
 Flow Rate: 2.2 ml/min
 Column: Poroshell 120 EC-C18, 4.6*30mm, 2.7um
 Oven Temperature: 50 C
 Mass Range: 110-800



Integration Results for ADC1 A, ELSD

RetTim	Width	Area	Height	Area%
1.87	0.02	450.20	332.55	100.00

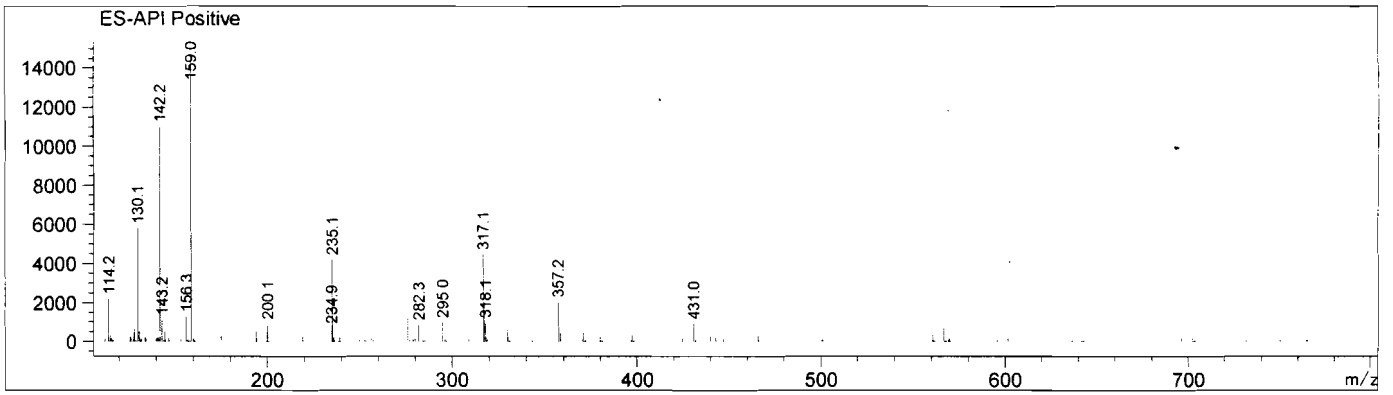
Integration Results for DAD1 A, Sig=214,4 Ref=off

RetTim	Width	Area	Height	Area%
1.87	0.01	532.00	653.77	100.00

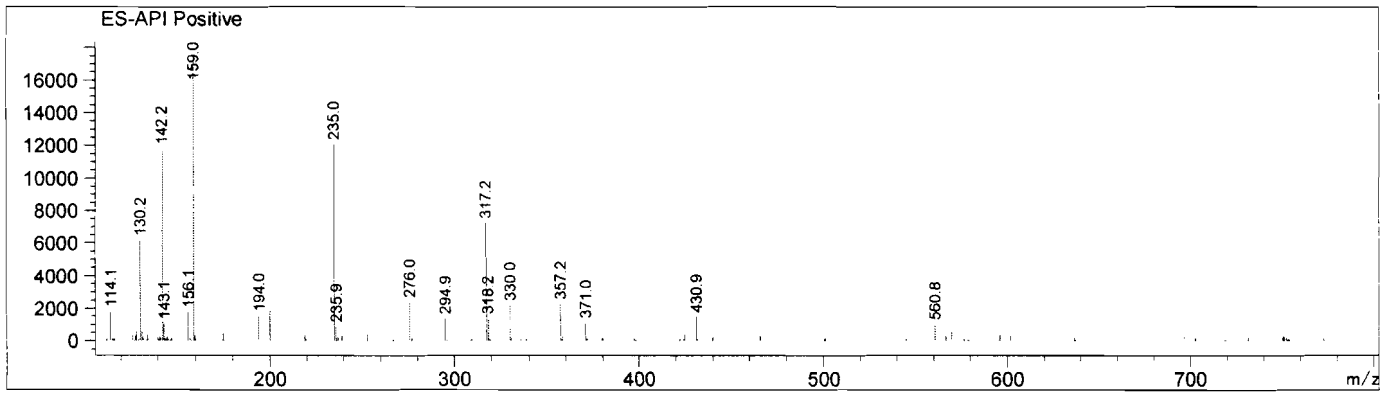
Integration Results for DAD1 B, Sig=254,4 Ref=off

RetTim	Width	Area	Height	Area%
1.87	0.01	470.65	636.50	100.00

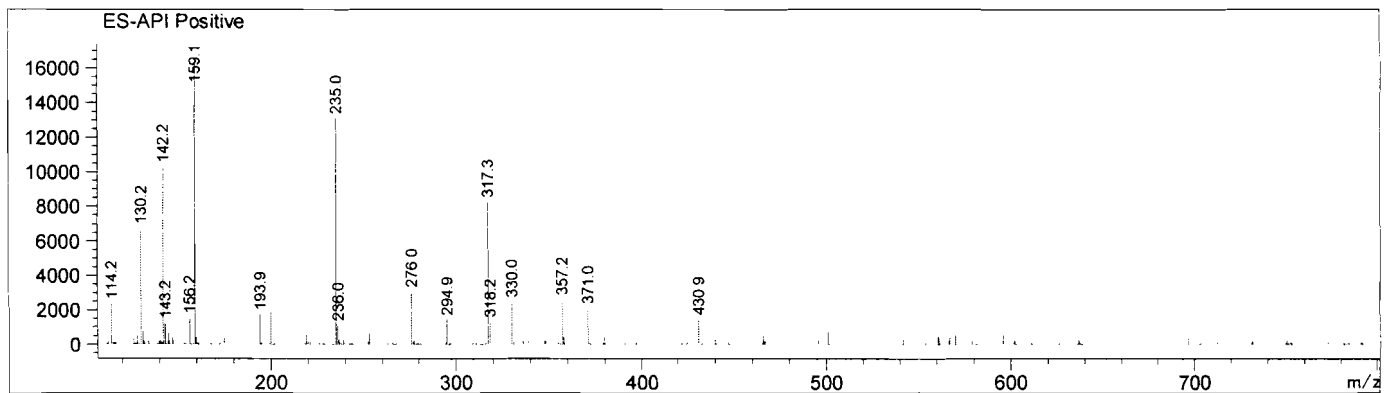
Ret. Time: 2.10 <<<< POSITIVE SPECTRA >>>>



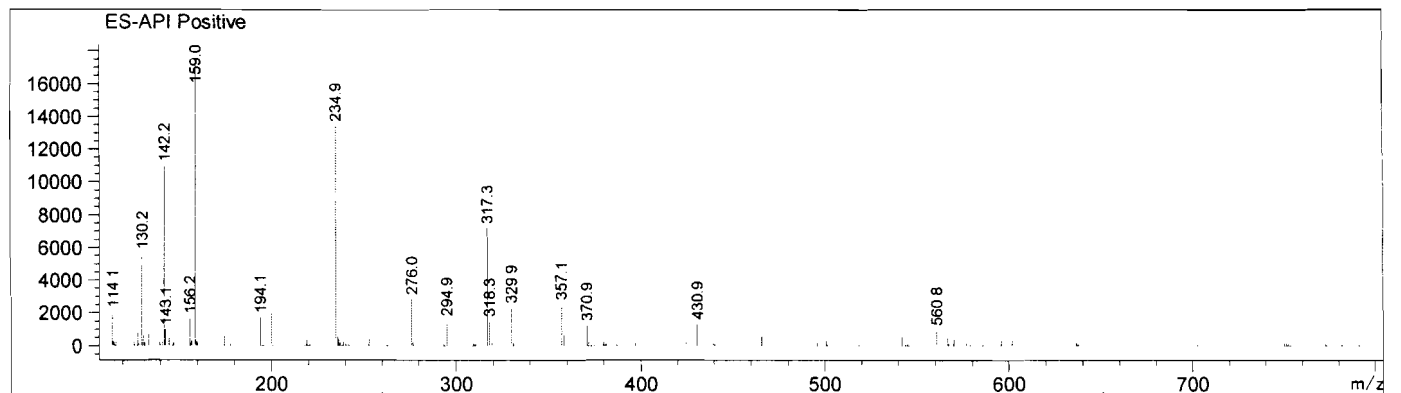
Ret. Time: 2.30



Ret. Time: 2.40



Ret. Time: 2.47



13.743

13.101

9.698

8.144

7.978

7.963

7.817

7.802

7.706

7.696

7.639

7.623

7.608

7.201

7.185

7.169

7.154

7.138

7.123

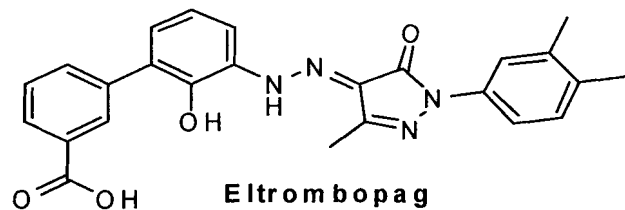
3.373

2.508

2.316

2.260

2.216



0.86

0.72

1.00

2.03

5.04

3.00

9.12

14

12

10

8

6

4

2

PPM

nmrB004, DMSO,

USER: nmr -- DATE: Sun Jan 06 06:33:56 2013

F1: 500.133

F2: 1.000

SW1: 10331

OF1: 3088.6

PTS1d: 32768

EX: zg30

PW: 13.7 usec

PD: 1.0 sec

NA: 8

LB: 0.0

Nuts - \$pdata