

File D:\DATA\

Acq. Method : D:\METHODS\1-POS-3MIN.M

Analysis Method : D:\METHODS\1-POS-3MIN.M

Sample Info : *** No target masses specified ***

Method Info : Mobile Phase: A: water(0.01%TFA) B: ACN(0.01%TFA)

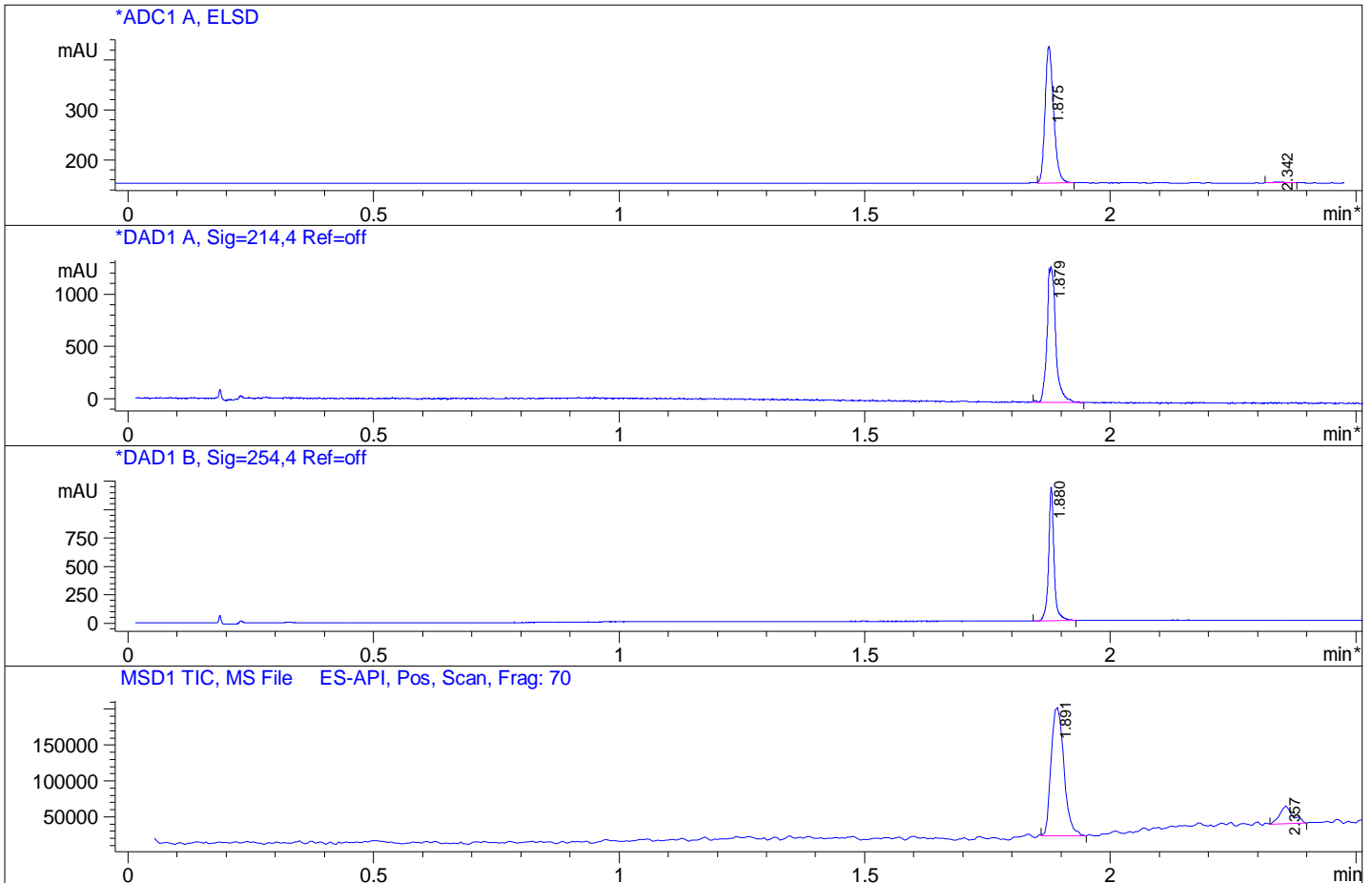
Gradient: 5%-95% B in 1.2min

Flow Rate: 2.2 ml/min

Column: Poroshell 120 EC-C18,4.6*30mm,2.7um

Oven Temperature: 50 C

Mass Range: 110-800



Integration Results for ADC1 A, ELSD

| RetTim | Width | Area | Height | Area% |
|--------|-------|--------|--------|-------|
| 1.88 | 0.02 | 330.46 | 273.31 | 98.87 |
| 2.34 | 0.02 | 3.76 | 2.44 | 1.13 |

Integration Results for DAD1 A, Sig=214,4 Ref=off

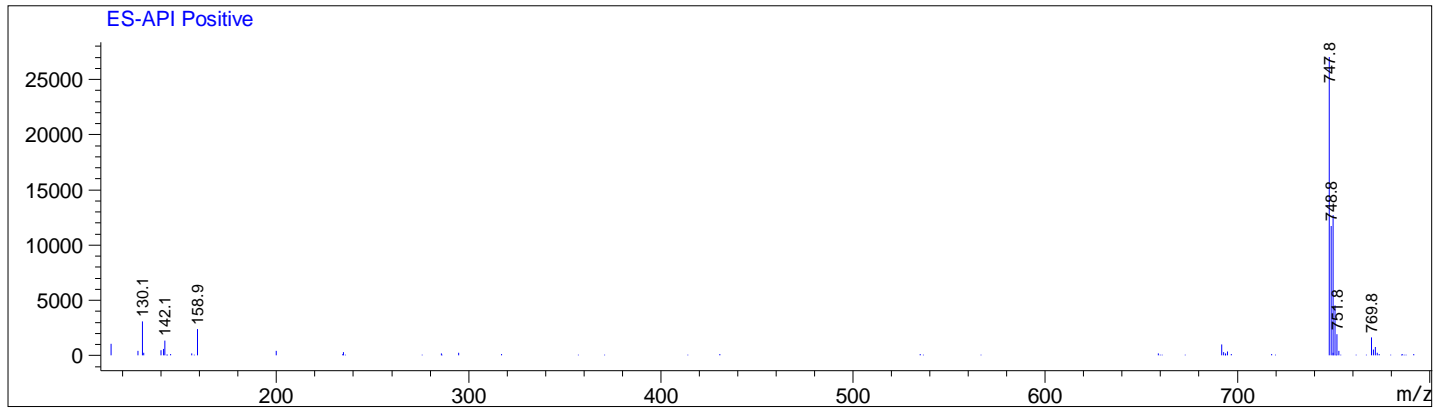
| RetTim | Width | Area | Height | Area% |
|--------|-------|---------|---------|--------|
| 1.88 | 0.02 | 1592.59 | 1281.90 | 100.00 |

Integration Results for DAD1 B, Sig=254,4 Ref=off

| RetTim | Width | Area | Height | Area% |
|--------|-------|--------|---------|--------|
| 1.88 | 0.01 | 903.95 | 1176.20 | 100.00 |

Ret. Time: 1.89

<<<< POSITIVE SPECTRA >>>>



Ret. Time: 2.36

