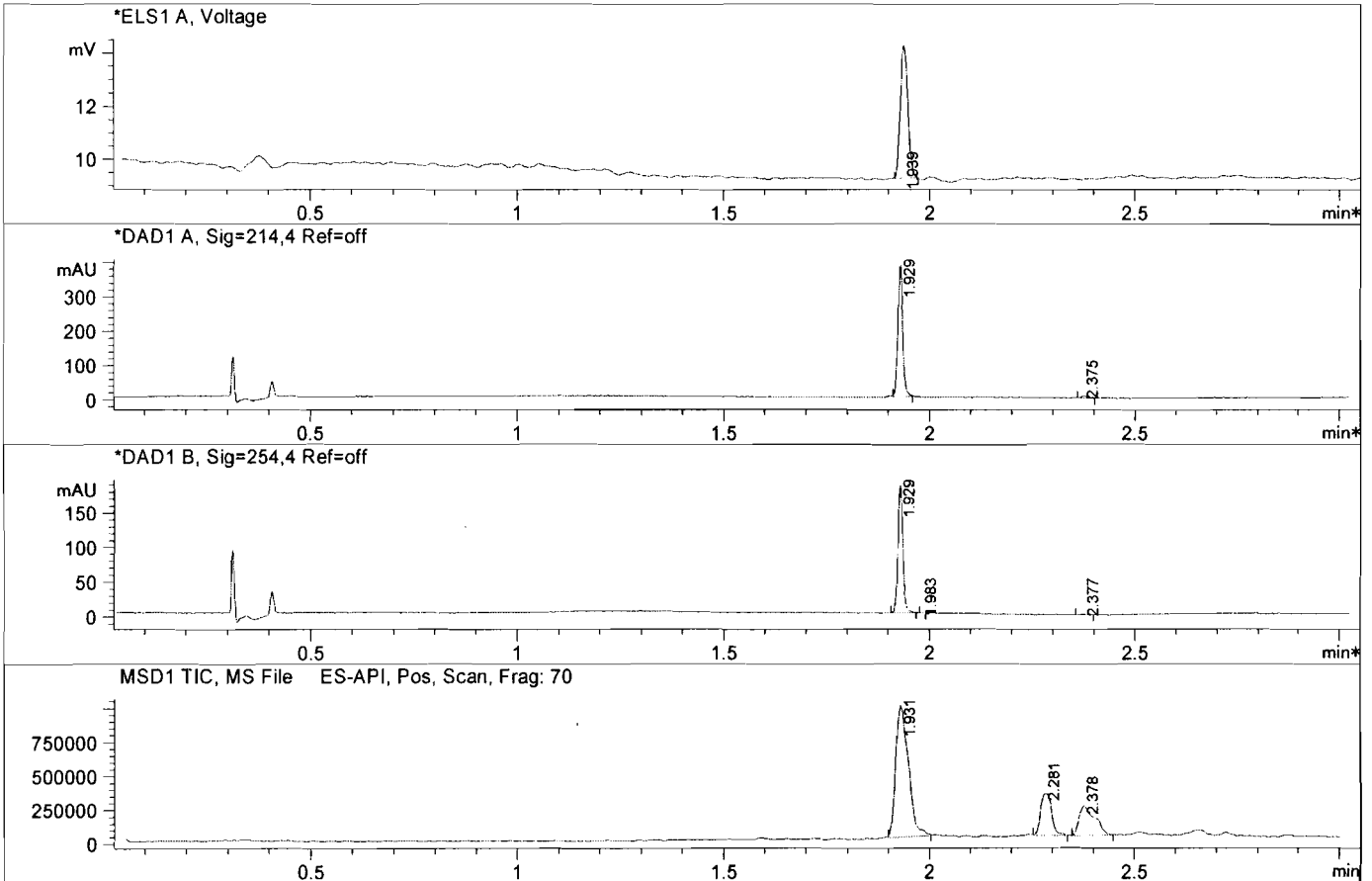


File D:\DATA\T158\MONITOR\PD98059-LCMS.D
 Injection Date : 3 Dec 12 7:50 pm +0800 Tgt Mass (EZ) :
 Sample Name : PD98059 Location : P1-C-06
 Acq. Operator : LCMS Inj : 1
 Spec. Reported : MS Integration Inj Volume : 5 ul
 Acq. Method : C:\Chem32\1\METHODS\1-POS-3MIN.M
 Analysis Method : C:\Chem32\1\METHODS\1-POS-3MIN.M
 Sample Info : *** No target masses specified ***
 Method Info : Mobile Phase: A: water(10mM Ammonium hydrogen carbonate) B: ACN
 Gradient: 5%-95% B in 1.5min
 Flow Rate: 2.0ml/min
 Column: XBridge C18,4.6*50mm,3.5um
 Oven Temperature: 40 C
 MASS Range:110-800



Integration Results for ELS1 A, Voltage

RetTim	Width	Area	Height	Area%
1.94	0.02	6.43	5.01	100.00

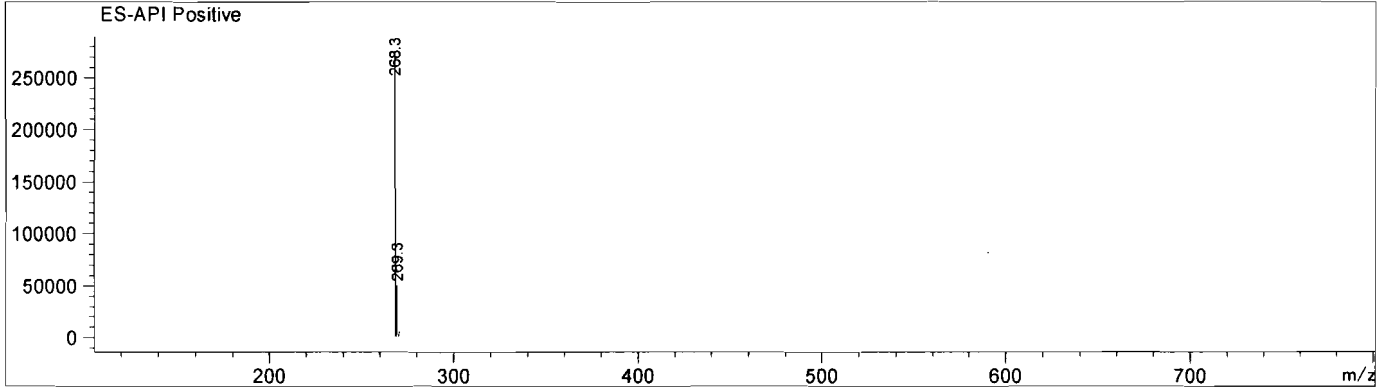
Integration Results for DAD1 A, Sig=214,4 Ref=off

RetTim	Width	Area	Height	Area%
1.93	0.01	322.18	382.51	98.41
2.38	0.02	5.20	5.20	1.59

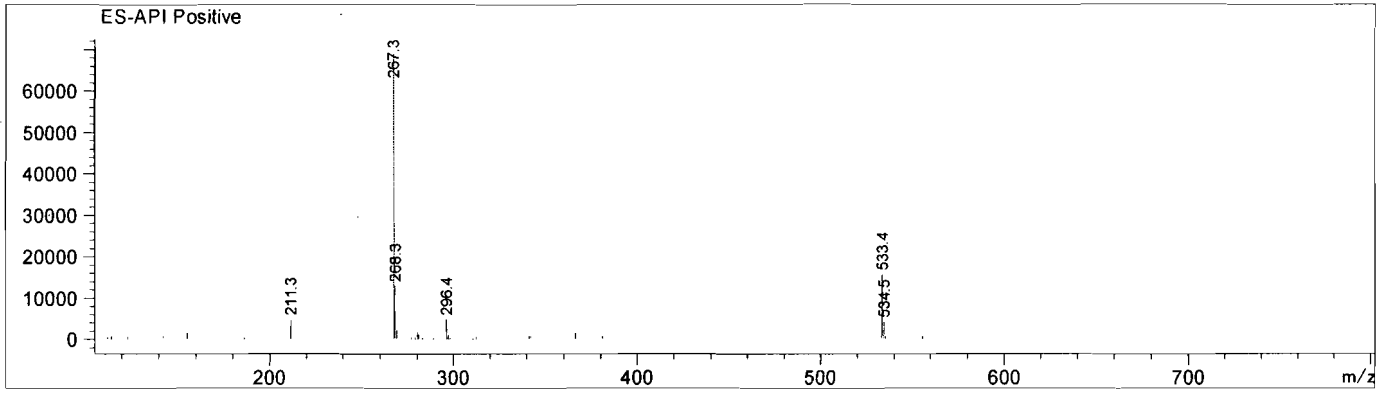
Integration Results for DAD1 B, Sig=254,4 Ref=off

RetTim	Width	Area	Height	Area%
1.93	0.01	156.53	183.94	99.30
1.98	0.01	0.26	0.74	0.16
2.38	0.01	0.84	1.01	0.54

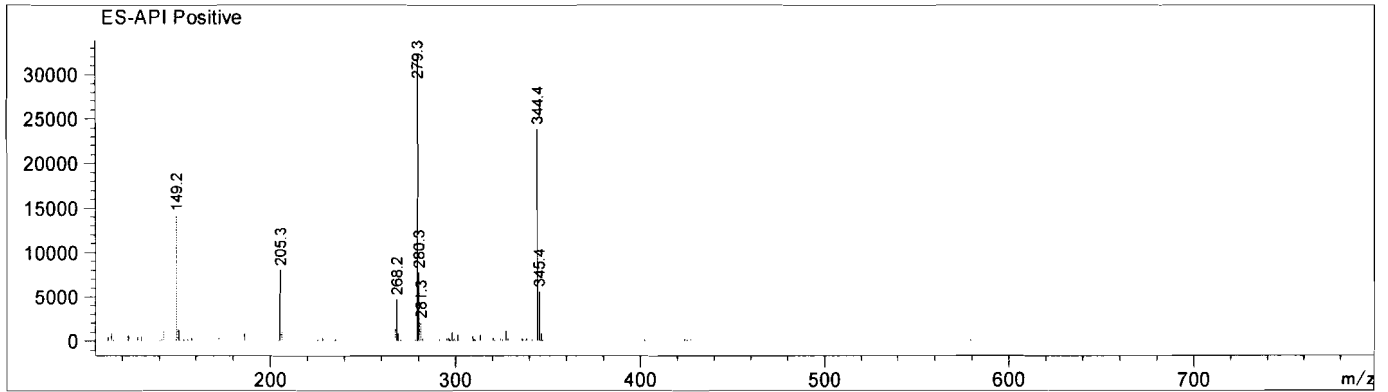
Ret. Time: 1.93 <<<< POSITIVE SPECTRA >>>>



Ret. Time: 2.28



Ret. Time: 2.38



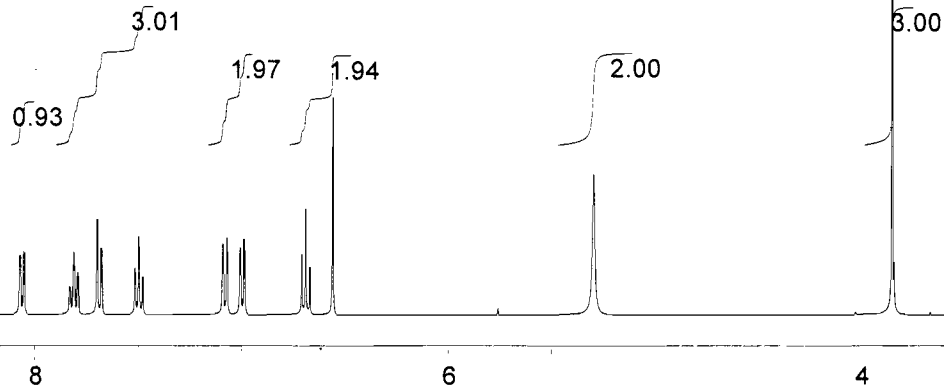
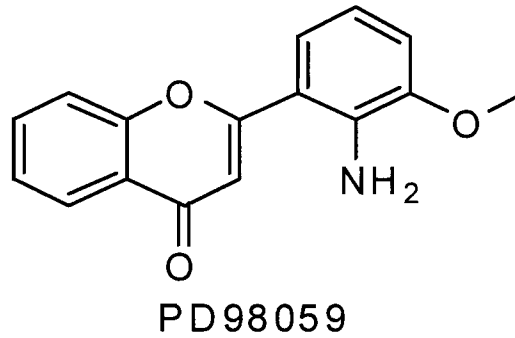
8.070
8.067
8.051
8.048
7.809
7.791
7.697
7.676
7.516
7.497
7.089
7.070
7.005
6.986
6.709
6.689
6.668
6.557

5.294

3.848

3.327

2.502



NMRB003, DMSO,

USER: nmrB601 -- DATE: Mon Dec 03 10:02:58 2012

F1: 400.132

F2: 1.000

SW1: 8224

OF1: 2474.3

PTS1d: 32768

EX: zg30

PW: 13.8 usec

PD: 1.0 sec

NA: 32

LB: 0.0

Nuts - \$pdata