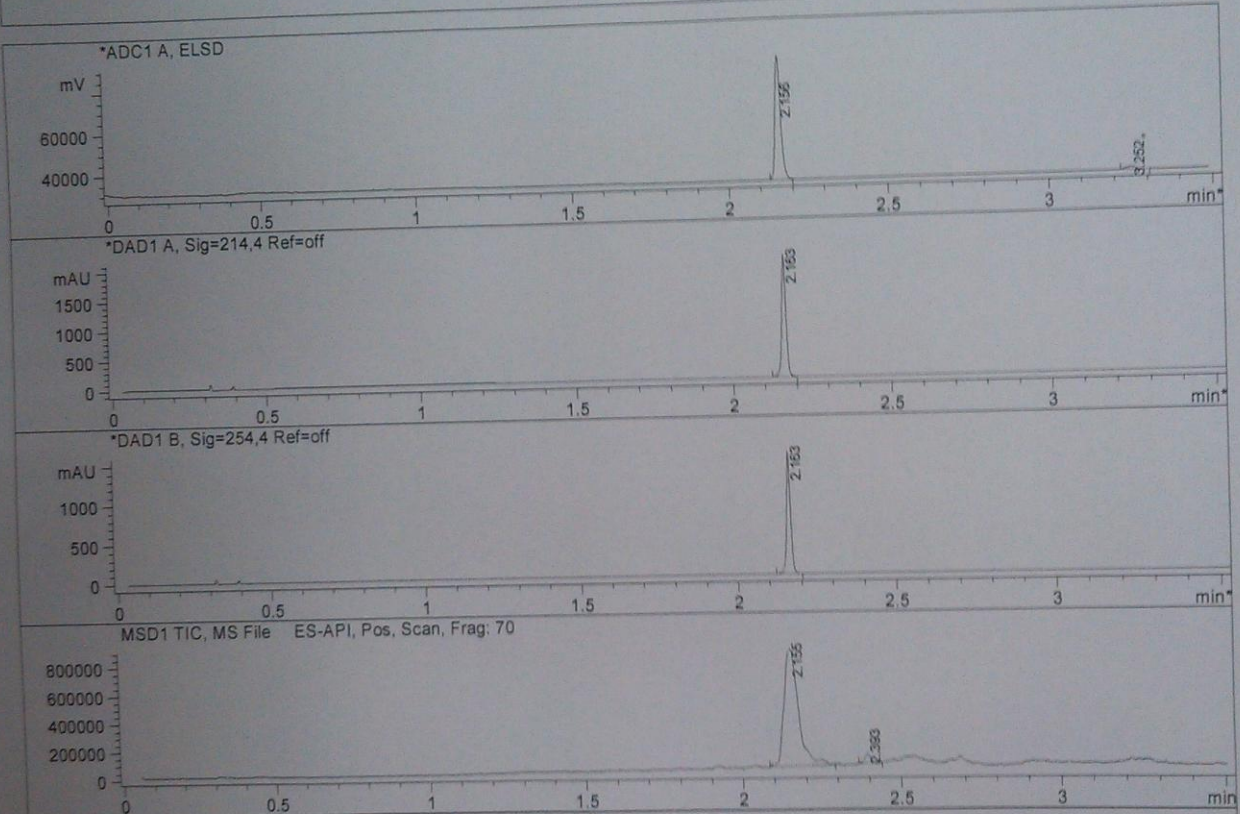


File D:\DATA\NU7441
 Acq. Method : C:\Chem32\1\METHODS\1-POS-3MIN.M
 Analysis Method : C:\Chem32\1\METHODS\1-POS-3MIN.M
 Sample Info : *** No target masses specified ***
 Method Info : Mobile Phase: A: water (10mM Ammonium hydrogen carbonate) B: ACN
 Gradient: 5%-95% B in 1.6min
 Flow Rate: 2.0ml/min
 Column: XBridge C18, 4.6*50mm, 3.5um
 Oven Temperature: 40 C
 MS Range: 110-800



Integration Results for ADC1 A, ELSD

RetTim	Width	Area	Height	Area%
2.16	0.02	73573.79	58733.61	96.85
3.25	0.03	2391.05	1316.80	3.15

Integration Results for DAD1 A, Sig=214,4 Ref=off

RetTim	Width	Area	Height	Area%
2.16	0.02	2014.03	2033.45	100.00

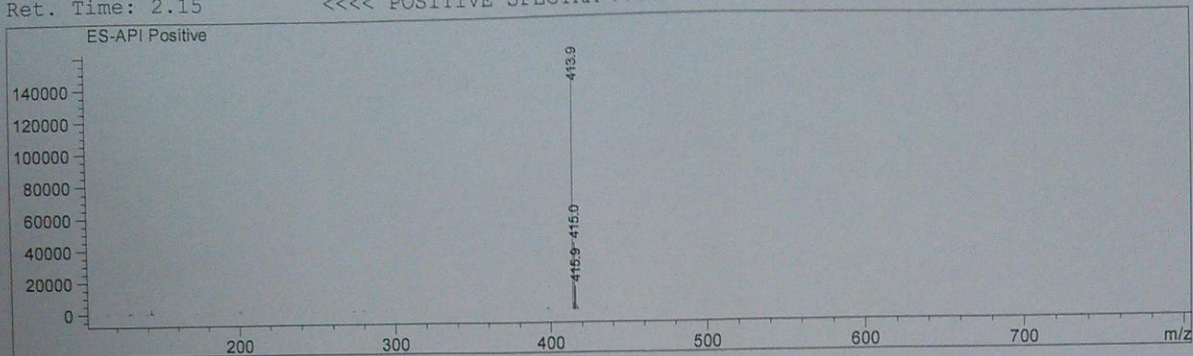
Integration Results for DAD1 B, Sig=254,4 Ref=off

RetTim	Width	Area	Height	Area%
2.16	0.01	1411.87	1524.30	100.00

LC/MS Report

Ret. Time: 2.15

<<<< POSITIVE SPECTRA >>>>



Ret. Time: 2.39

