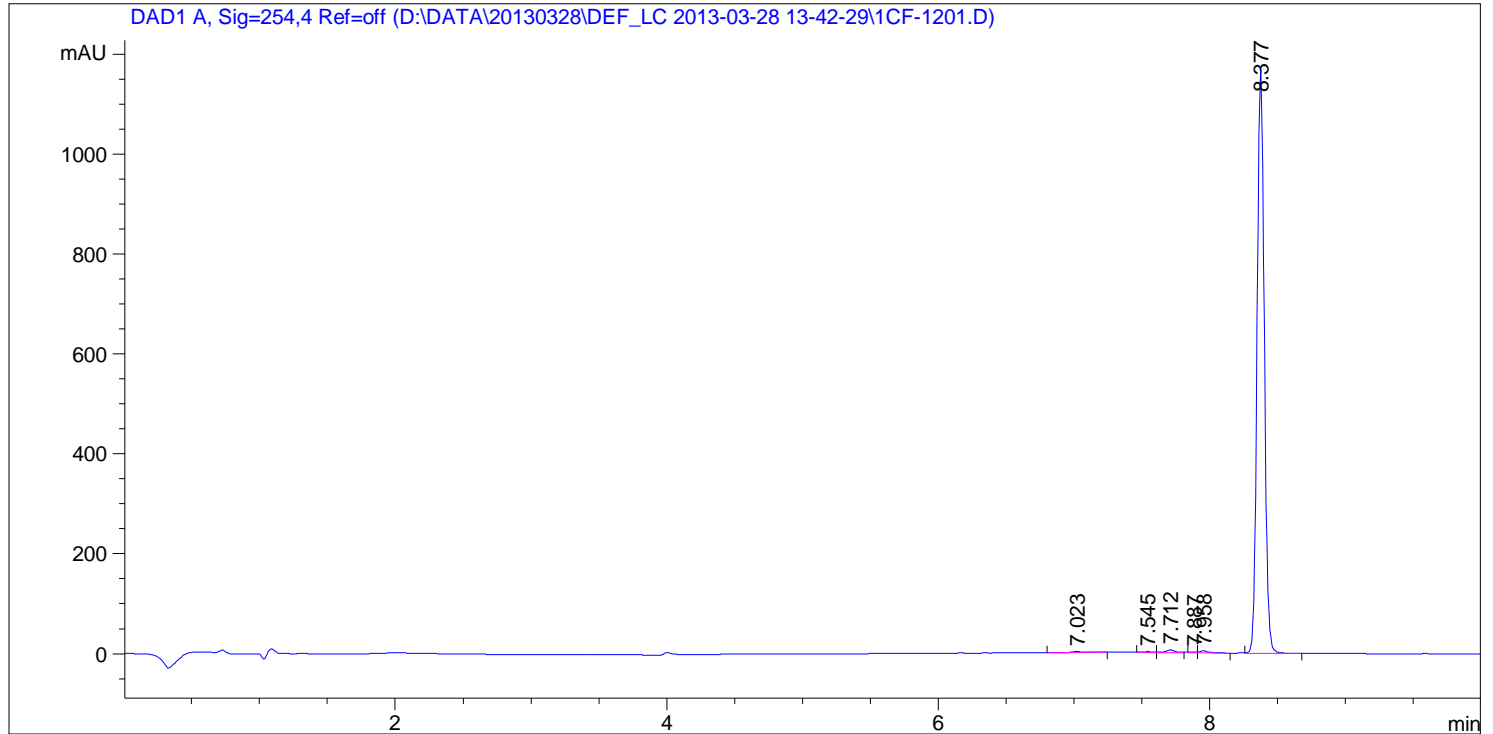


Sample Name: wh0328-1

```

=====
Acq. Operator   : he                               Seq. Line :   12
Acq. Instrument : Instrument 1                     Location  : P1-C-06
Injection Date  : 3/28/2013 3:50:59 PM           Inj       :    1
                                                    Inj Volume: 5.0 µl
Different Inj Volume from Sequence !      Actual Inj Volume : 8.0 µl
Acq. Method     : D:\DATA\20130328\DEF_LC 2013-03-28 13-42-29\20101217.M
Last changed    : 3/21/2013 9:12:56 AM by he
Analysis Method : C:\CHEM32\1\METHODS\20101217.M
Last changed    : 3/28/2013 4:01:22 PM by he
                (modified after loading)
    
```



Area Percent Report

```

Sorted By      :      Signal
Multiplier:    :      1.0000
Dilution:      :      1.0000
Use Multiplier & Dilution Factor with ISTDs
    
```

Signal 1: DAD1 A, Sig=254,4 Ref=off

Peak #	RetTime [min]	Type	Width [min]	Area [mAU*s]	Height [mAU]	Area %
1	7.023	BB	0.0927	14.97406	2.16586	0.3377
2	7.545	BV	0.0802	8.23320	1.40867	0.1857
3	7.712	VB	0.0723	27.90701	5.58151	0.6293

Sample Name: wh0328-1

Peak #	RetTime [min]	Type	Width [min]	Area [mAU*s]	Height [mAU]	Area %
4	7.887	BV	0.0551	7.68731	1.98942	0.1734
5	7.958	VB	0.0687	19.65178	4.19511	0.4432
6	8.377	VB	0.0574	4355.93848	1170.37891	98.2308

Totals : 4434.39184 1185.71947

=====
*** End of Report ***