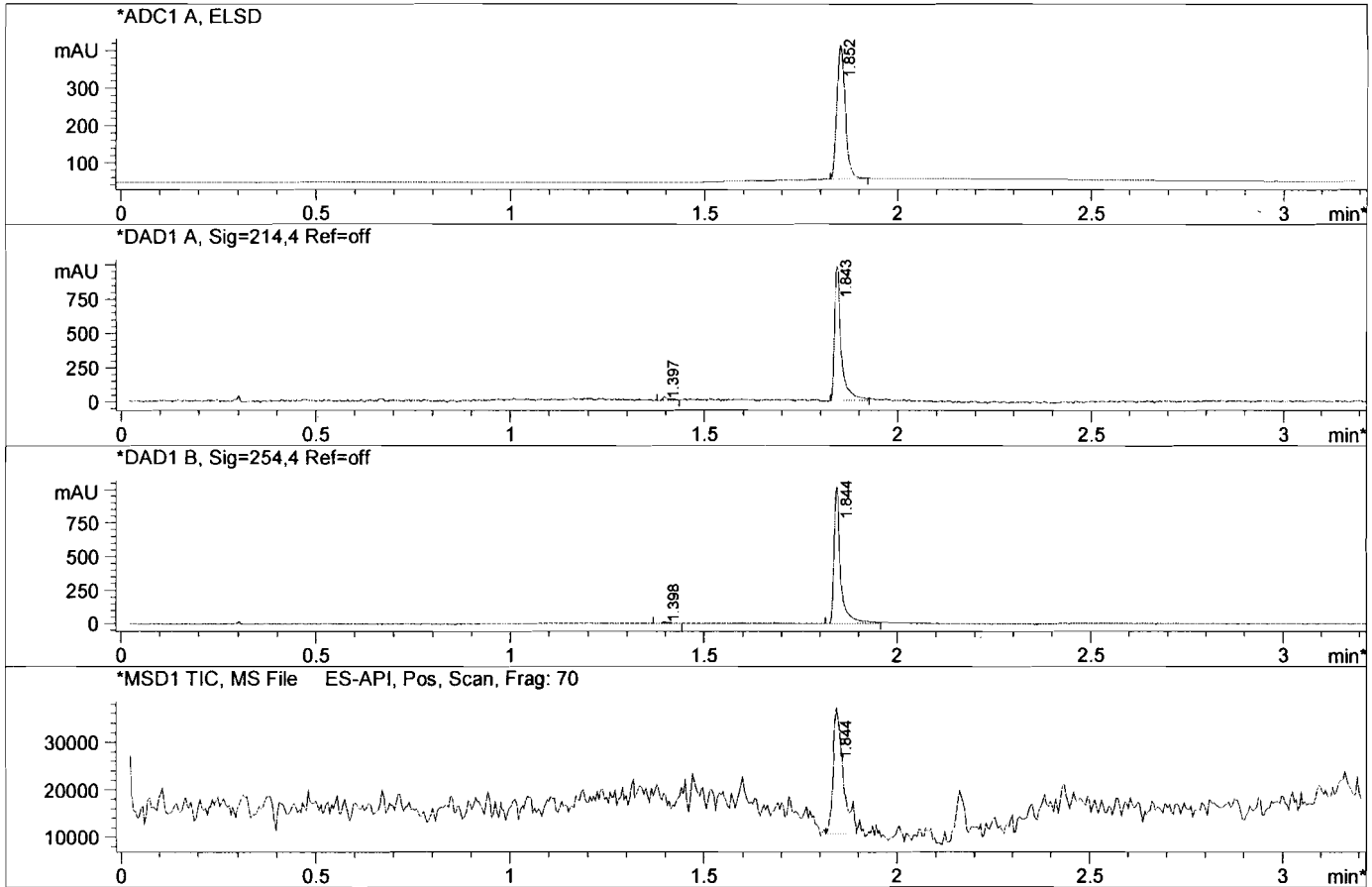


File D:\DATA\MONITOR\CX4945-LCMS.D  
 Injection Date : 3 Dec 12 7:25 pm +0800 Tgt Mass (EZ) :  
 Sample Name : CX4945 Location : P2-E-02  
 Acq. Operator : LCMS Inj : 1  
 Spec. Reported : MS Integration Inj Volume : 2 ul  
 Acq. Method : C:\Chem32\1\METHODS\1-POS-3MIN.M  
 Analysis Method : C:\Chem32\1\METHODS\1-POS-3MIN.M  
 Sample Info : \*\*\* No target masses specified \*\*\*  
 Method Info : Mobile Phase: A: water(0.01%TFA) B: ACN(0.01%TFA)  
 Gradient: 5%-95% B in 1.4min  
 Flow Rate: 2.3 ml/min  
 Column: SunFire C18,4.6\*50mm,3.5um  
 Oven Temperature: 50 C  
 Mass Range: 110-800



Integration Results for ADC1 A, ELSD

RetTim	Width	Area	Height	Area%
1.85	0.02	547.35	359.07	100.00

Integration Results for DAD1 A, Sig=214,4 Ref=off

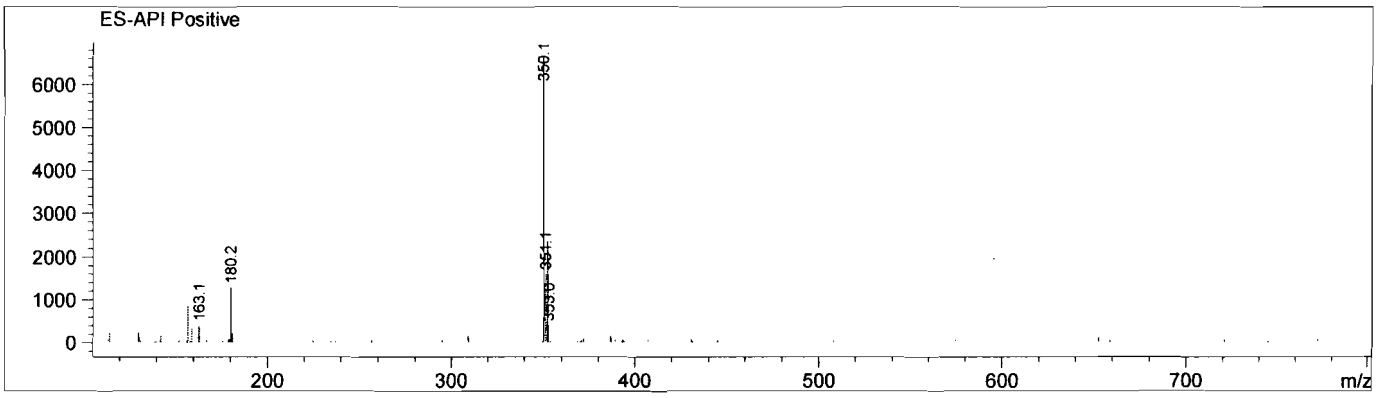
RetTim	Width	Area	Height	Area%
1.40	0.02	37.12	26.95	3.02
1.84	0.02	1192.17	979.45	96.98

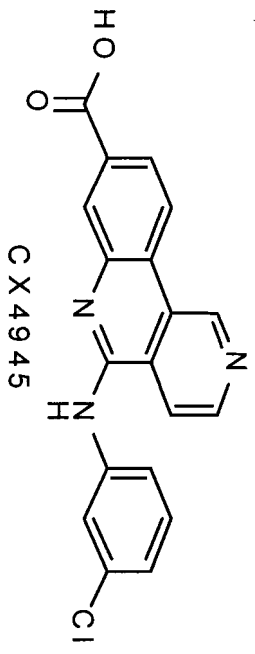
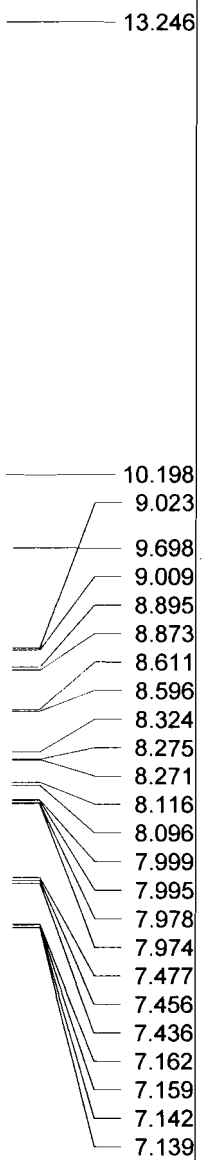
Integration Results for DAD1 B, Sig=254,4 Ref=off

RetTim	Width	Area	Height	Area%
1.40	0.02	12.62	10.96	1.04
1.84	0.02	1201.54	966.36	98.96

Ret. Time: 1.84

<<<< POSITIVE SPECTRA >>>>





NMRB003, DMSO, F1: 400.132, F2: 1.000, SW1: 8224, PW: 13.8 usec, PD: 1.0 sec, OF1: 2474.9, NA: 32, LB: 0.0, USER: nmrb601 -- DATE: Mon Dec 03 10:07:55 2012, PTSId: 32768, Nuts - Spdata