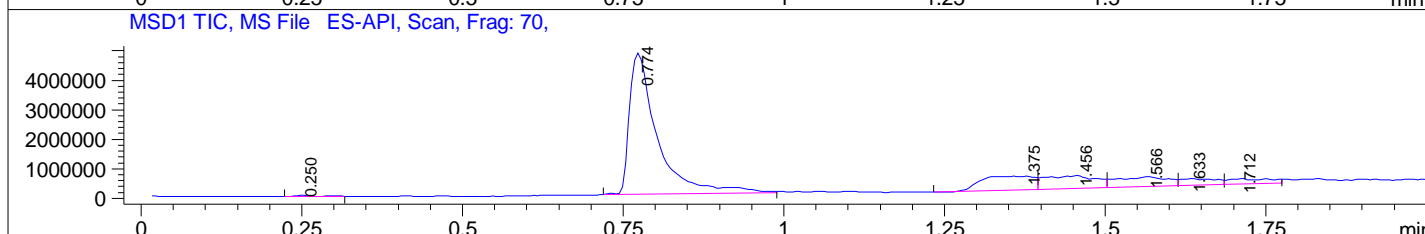
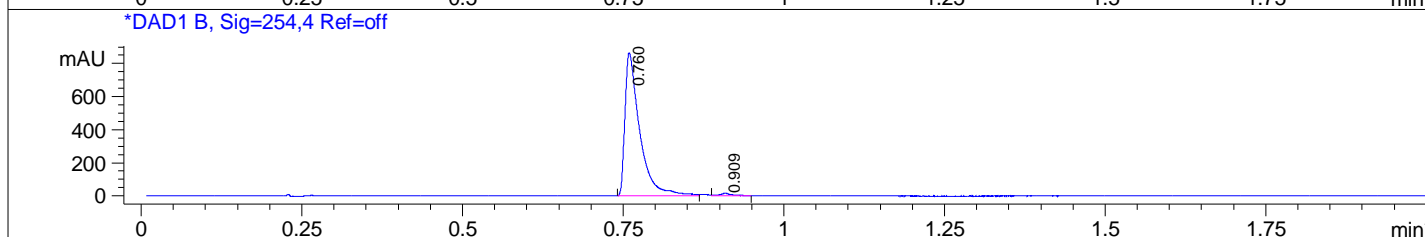
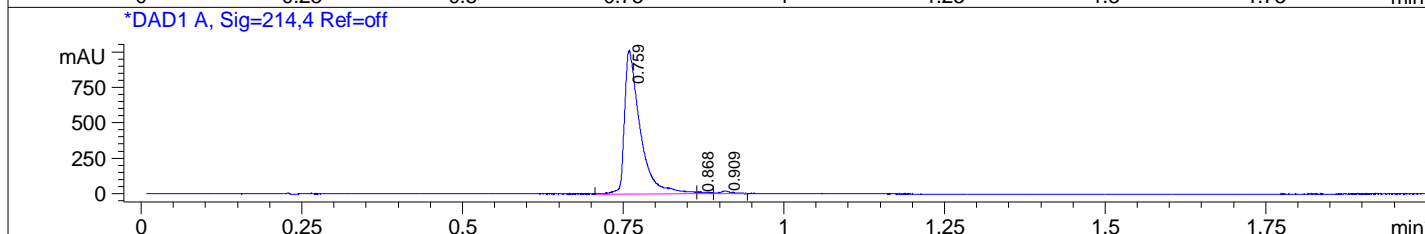
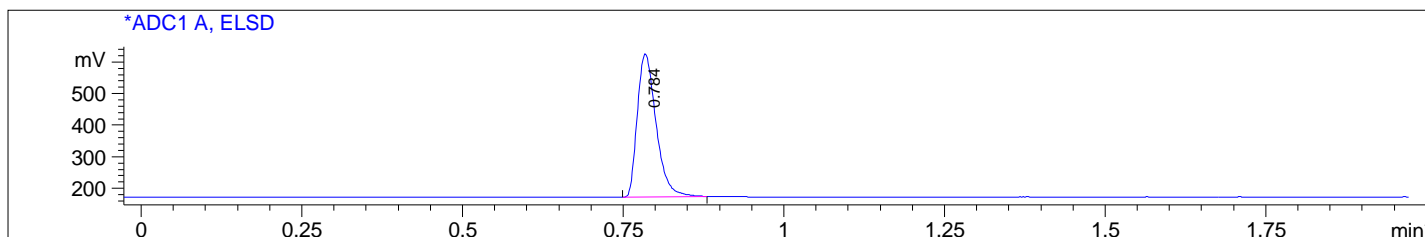


File D:\DATA\PREP\MONITOR\CX-5461-06959-LCMS
 Injection Date : 4 Mar 13 2:45 pm +0800 Tgt Mass(EZX) :
 Sample Name : CX-5461 Location : P1-A-03
 Acq. Operator : PREP Inj : 1
 Spec. Reported : MS Integration Inj Volume : 0.8 ul
 Acq. Method : C:\Chem32\1\METHODS\1-POS-2MIN.M
 Analysis Method : C:\Chem32\1\METHODS\1-POS-2MIN.M
 Sample Info : Easy-Access Method: '1-POS-2MIN'
 Method Info : Mobile Phase: A: Water(0.01%TFA) B: ACN(0.01%TFA)
 Gradient: 5%B increase to 100%B within 0.8min,100%B for 1.1min.
 Flow Rate:1.5mL/min
 Column: Chromolith Fast Gradien RP-18e,50-3mm.
 Column Temperature: 40C
 Mass Range:100-1000



Integration Results for ADC1 A, ELSD

RetTim	Width	Area	Height	Area%
0.78	0.03	928.86	454.42	100.00

Integration Results for DAD1 A, Sig=214,4 Ref=off

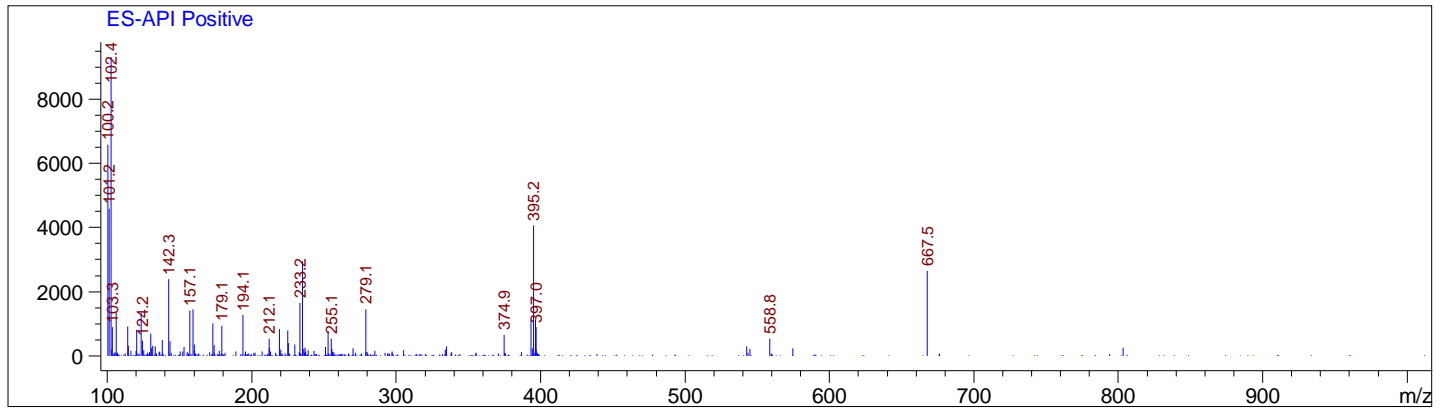
RetTim	Width	Area	Height	Area%
0.76	0.02	1709.46	1002.94	97.65
0.87	0.02	15.30	12.64	0.87
0.91	0.02	25.85	19.31	1.48

Integration Results for DAD1 B, Sig=254,4 Ref=off

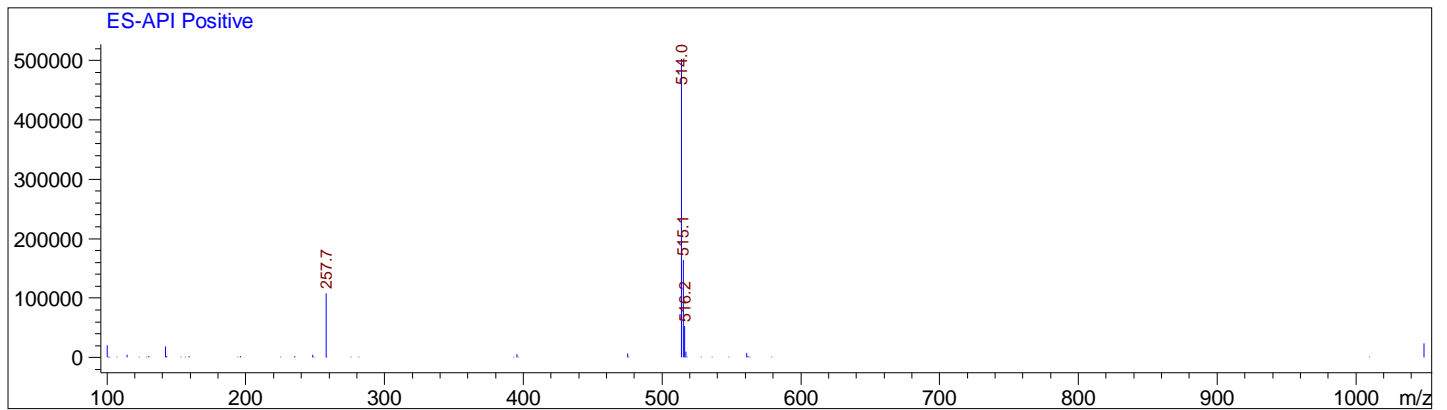
RetTim	Width	Area	Height	Area%
0.76	0.02	1383.68	866.03	98.46
0.91	0.02	21.61	15.73	1.54

Ret. Time: 0.25

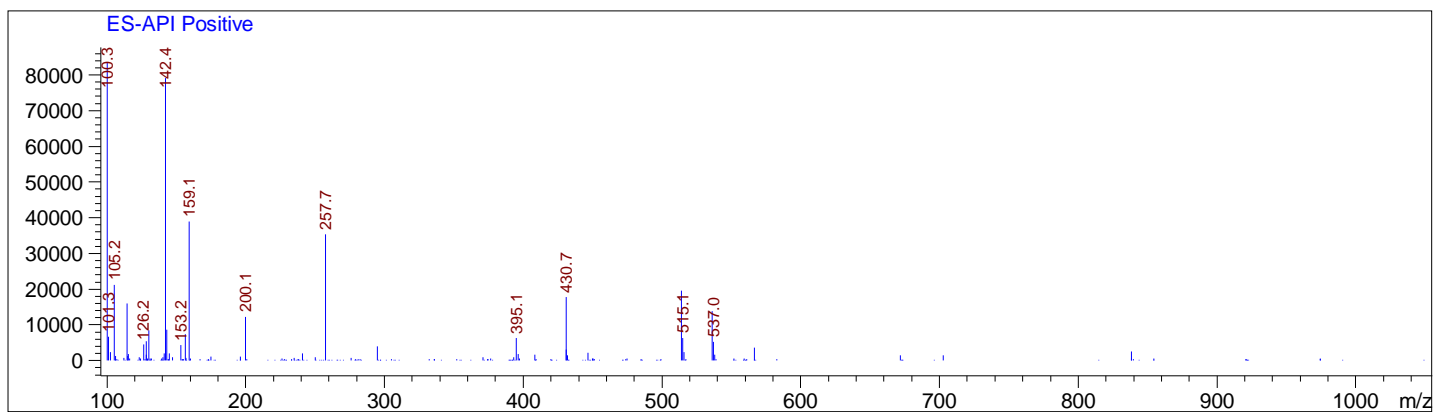
<<<< POSITIVE SPECTRA >>>>



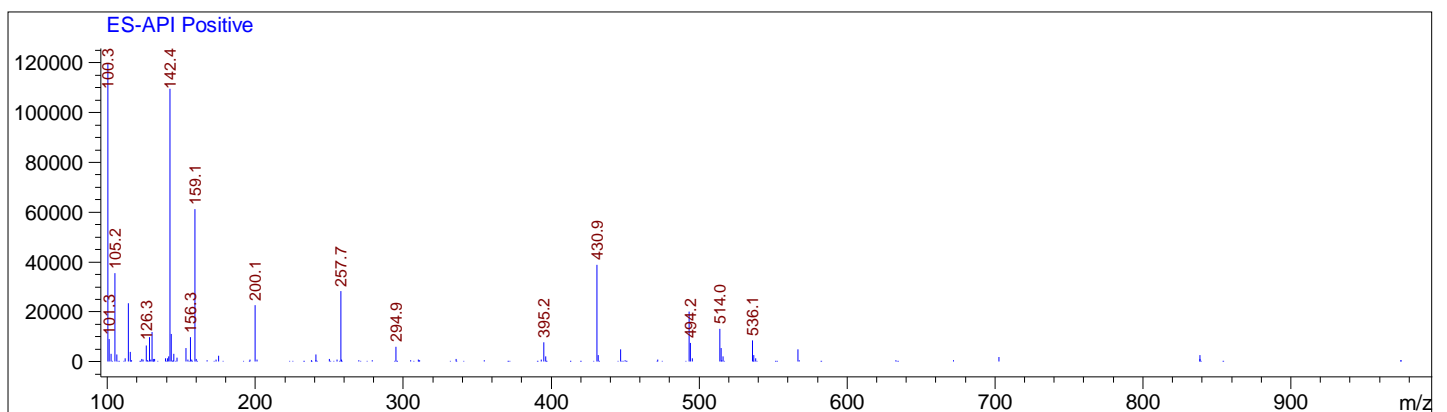
Ret. Time: 0.77



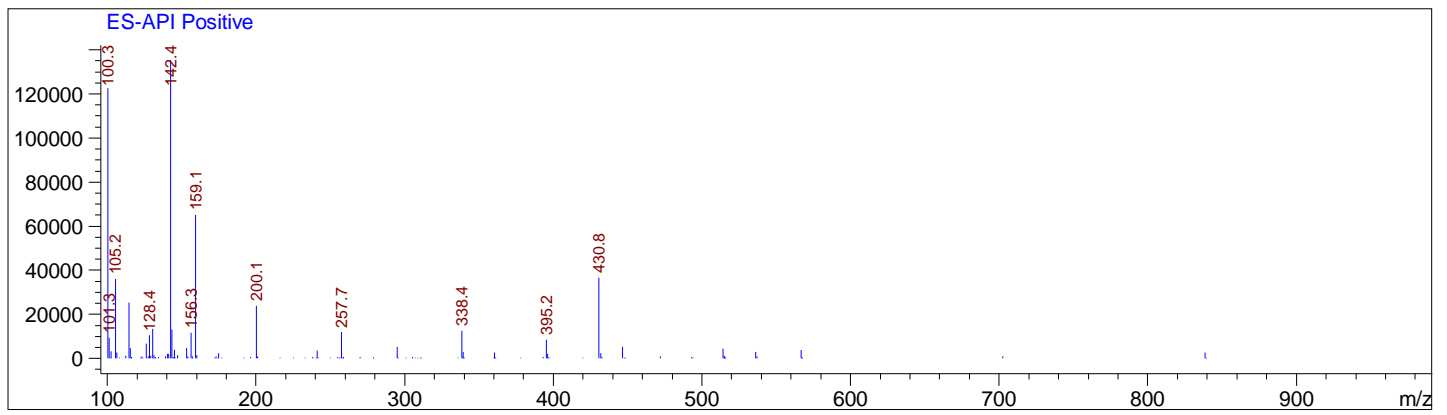
Ret. Time: 1.38



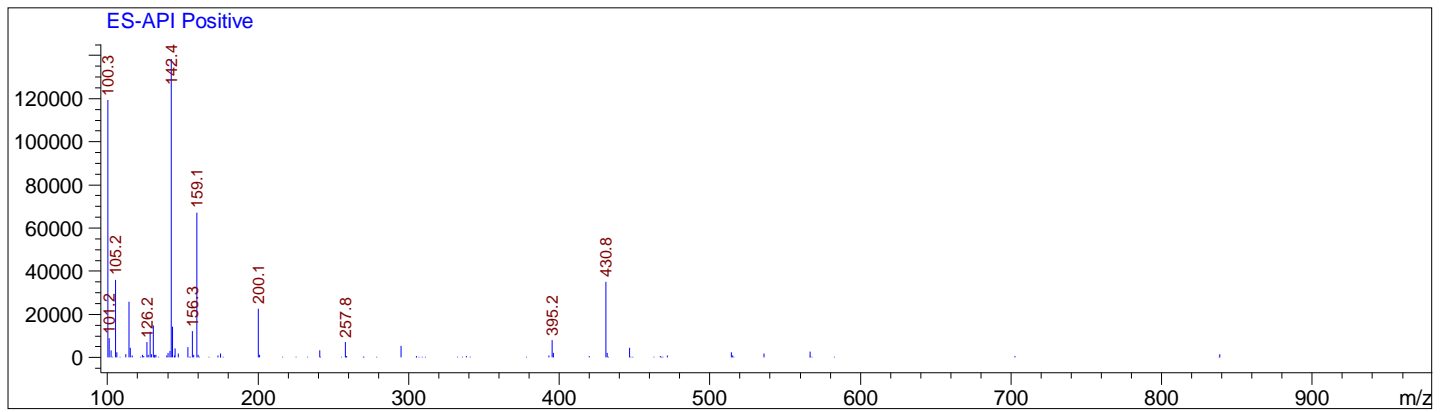
Ret. Time: 1.46



Ret. Time: 1.57



Ret. Time: 1.63



Ret. Time: 1.71

