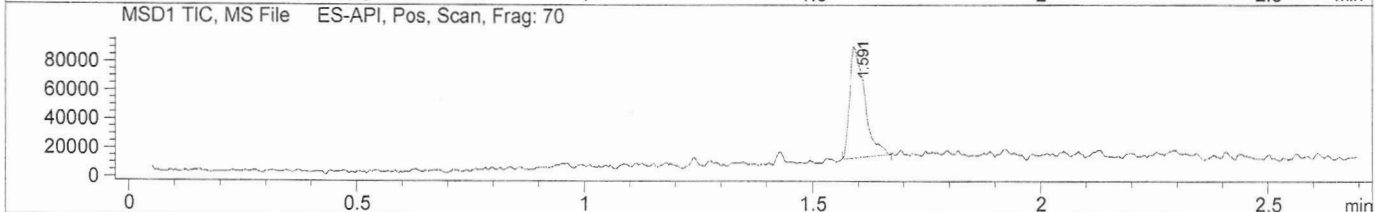
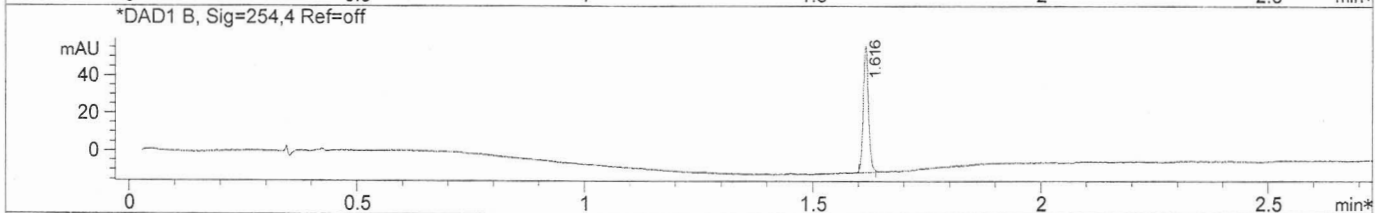
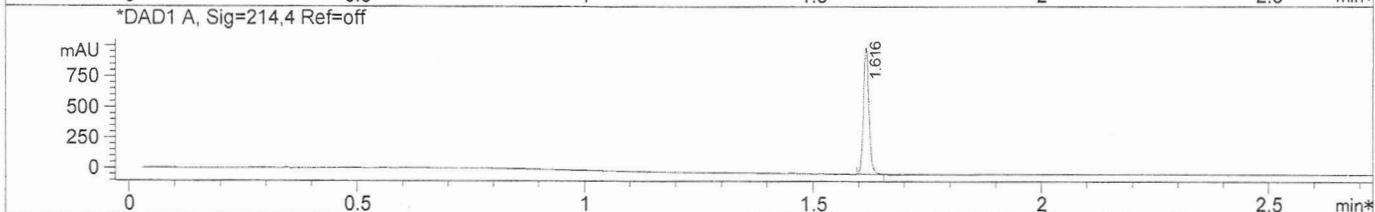
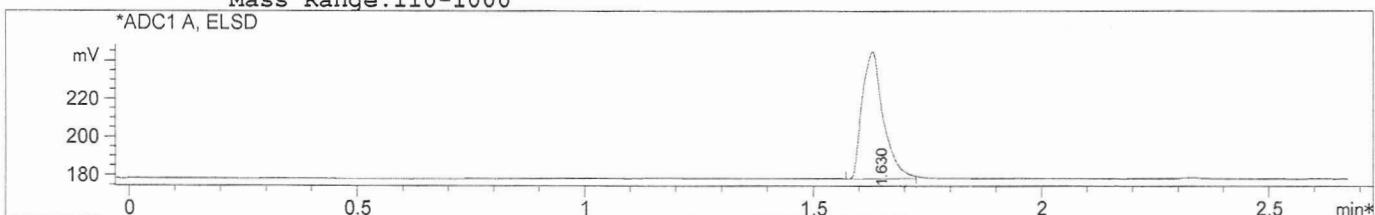


LC/MS Report

File D:\DATA  
 Injection Date : 9 Apr 14 2:45 pm +0800 Tgt Mass (EZX) :  
 Sample Name : 913358-93-7 2014040904 Location : P2-D-04  
 Acq. Operator : Monitor Inj : 1  
 Spec. Reported : MS Integration Inj Volume : 0.5 ul  
 Acq. Method : D:\METHODS\1-POS-MON.M  
 Analysis Method : D:\METHODS\1-POS-MON.M  
 Sample Info : Easy-Access Method: '1-POS-MON'  
 Method Info : Mobile Phase: A: water(10mMNH4HCO3) B: ACN  
 Gradient: 5%B increase to 95%B within 1.2min,  
 95%B for 1.3min, back to 5%B within 0.01min.  
 Flow Rate: 2 mL/min  
 Column: XBridge, 3.5um, 50\*4.6mm  
 Oven Temperature: 50 C  
 Mass Range: 110-1000



Integration Results for ADC1 A, ELSD

RetTim	Width	Area	Height	Area%
1.63	0.05	211.53	66.18	100.00

Integration Results for DAD1 A, Sig=214,4 Ref=off

RetTim	Width	Area	Height	Area%
1.62	0.01	881.78	1041.35	100.00

Integration Results for DAD1 B, Sig=254,4 Ref=off

RetTim	Width	Area	Height	Area%
1.62	0.01	53.37	67.14	100.00

LC/MS Report

Ret. Time: 1.59

<<<< POSITIVE SPECTRA >>>>

