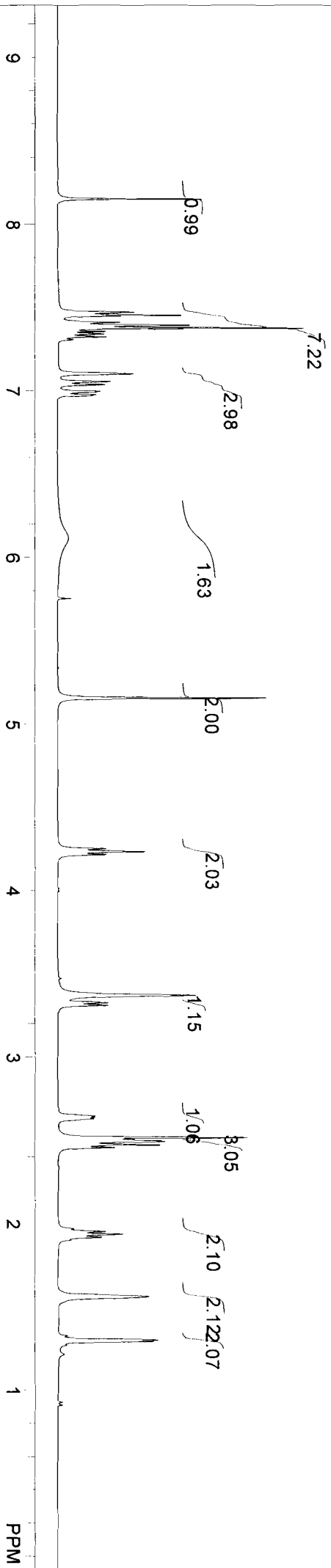
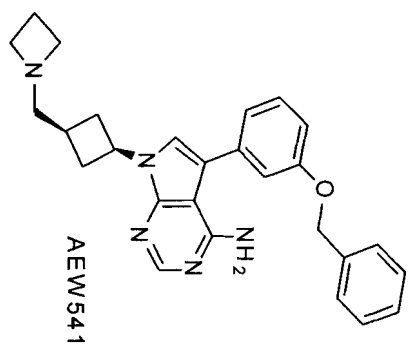


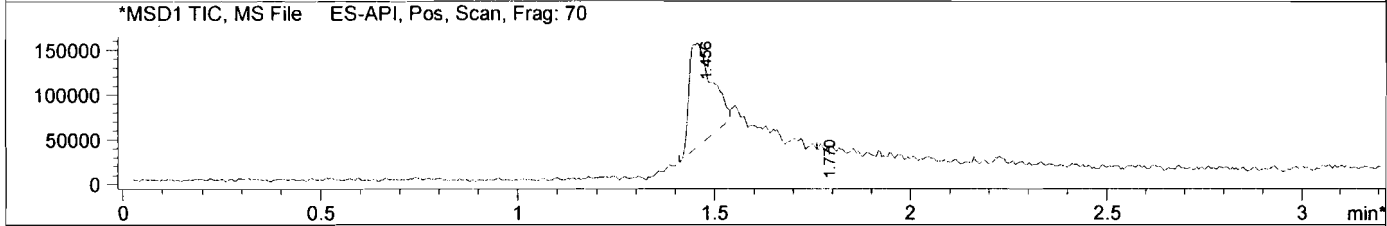
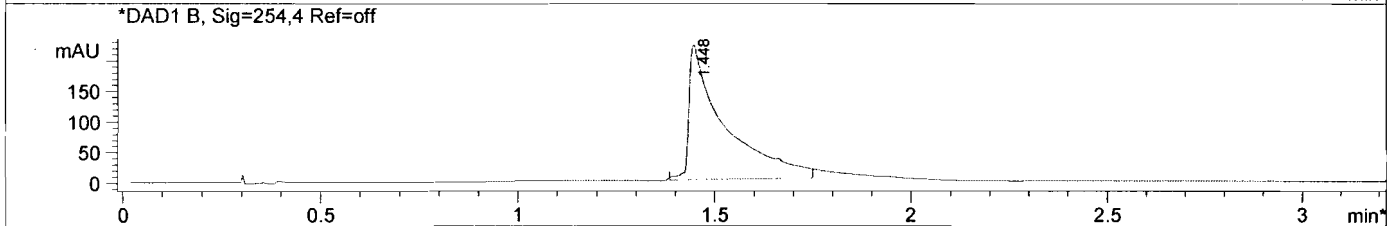
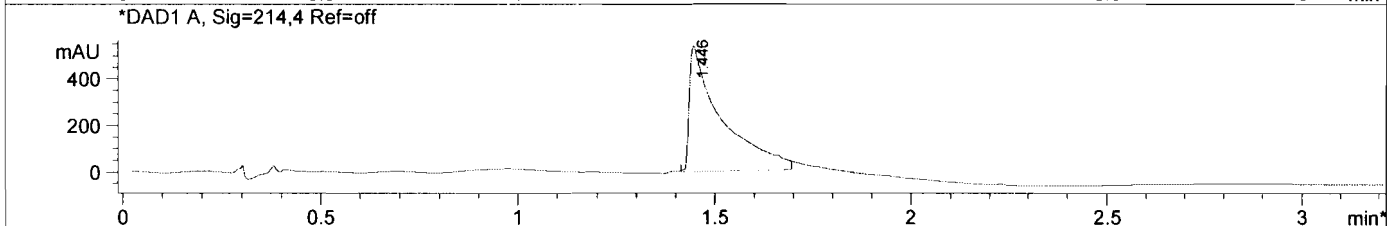
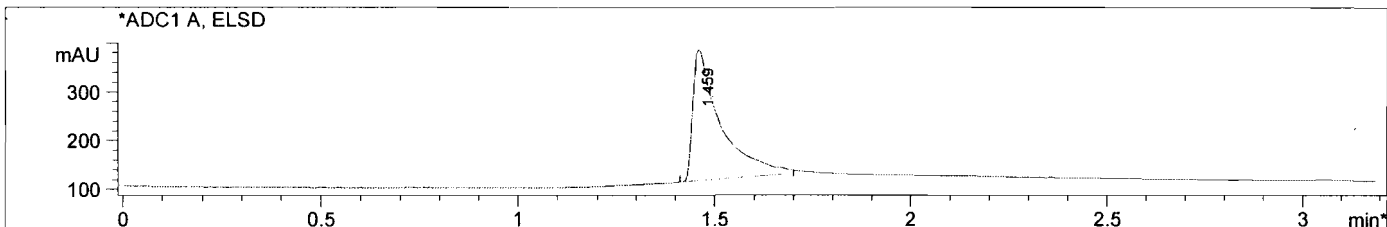
- 8.149
- 7.469
- 7.452
- 7.410
- 7.393
- 7.377
- 7.356
- 7.342
- 7.323
- 7.306
- 7.102
- 7.052
- 7.034
- 6.995
- 6.990
- 6.974
- 6.969
- 6.113
- 5.751
- 5.154
- 4.251
- 4.234
- 4.216
- 3.368
- 3.324
- 3.308
- 2.643
- 2.635
- 2.628
- 2.513
- 2.493
- 2.488
- 2.470
- 2.453
- 1.968
- 1.950
- 1.933
- 1.916
- 1.898
- 1.559
- 1.324
- 1.302
- 1.299
- 1.292



NMRB003, DMSO, F1: 400.132, F2: 1.000, SW1: 8224, PW: 13.8 usec, PD: 1.0 sec, OF1: 2471.0, NA: 8, LB: 0.0, USER: jmrB601 -- DATE: Wed Jan 09 07:28:06 2013, PTSID: 32768, EX: zc30, Nurs - \$pdata

```

File D:\DATA\MONITOR\AEW541-LCMS.D
Injection Date   : 9 Jan 13 5:45 pm +0800      Tgt Mass (EZX) :
Sample Name     : AEW541                      Location  : P1-F-03
Acq. Operator  : LCMS                        Inj       : 1
Spec. Reported  : MS Integration              Inj Volume : 1 ul
Acq. Method    : C:\Chem32\1\METHODS\1-POS-3MIN.M
Analysis Method : C:\Chem32\1\METHODS\1-POS-3MIN.M
Sample Info    : *** No target masses specified ***
Method Info    : Mobile Phase: A: water(0.01%TFA)  B: ACN(0.01%TFA)
                  Gradient: 5%-95% B in 1.4min
                  Flow Rate: 2.3 ml/min
                  Column: SunFire C18,4.6*50mm,3.5um
                  Oven Temperature: 50 C
                  Mass Range: 110-800
    
```



Integration Results for ADC1 A, ELSD

RetTim	Width	Area	Height	Area%
1.46	0.07	1321.39	269.13	100.00

Integration Results for DAD1 A, Sig=214,4 Ref=off

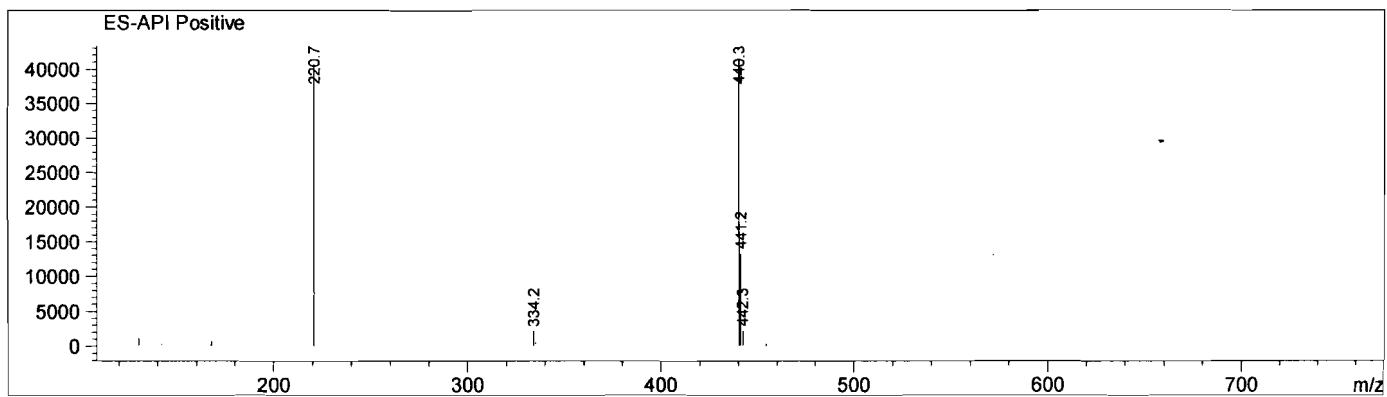
RetTim	Width	Area	Height	Area%
1.45	0.07	3108.27	540.66	100.00

Integration Results for DAD1 B, Sig=254,4 Ref=off

RetTim	Width	Area	Height	Area%
1.45	0.08	1399.55	212.56	100.00

Ret. Time: 1.46

<<<< POSITIVE SPECTRA >>>>



Ret. Time: 1.77

