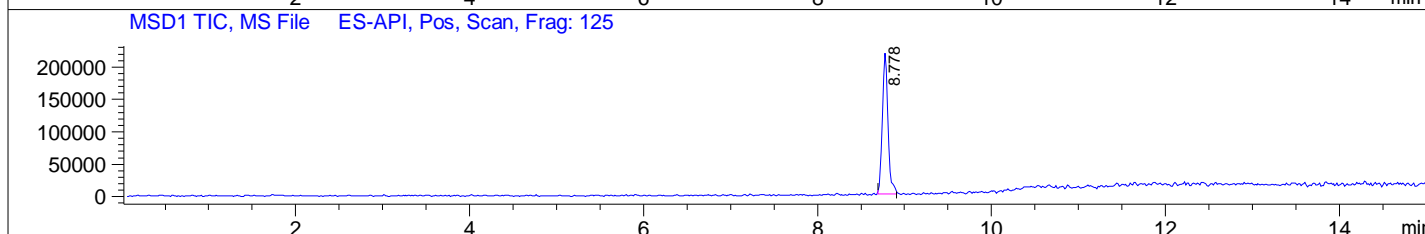
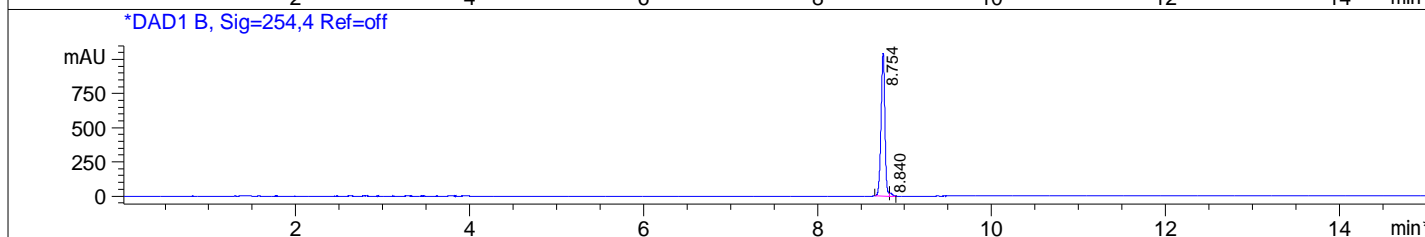
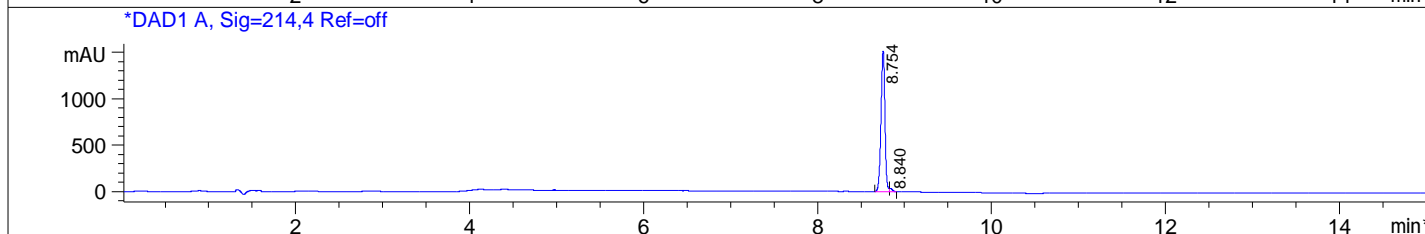
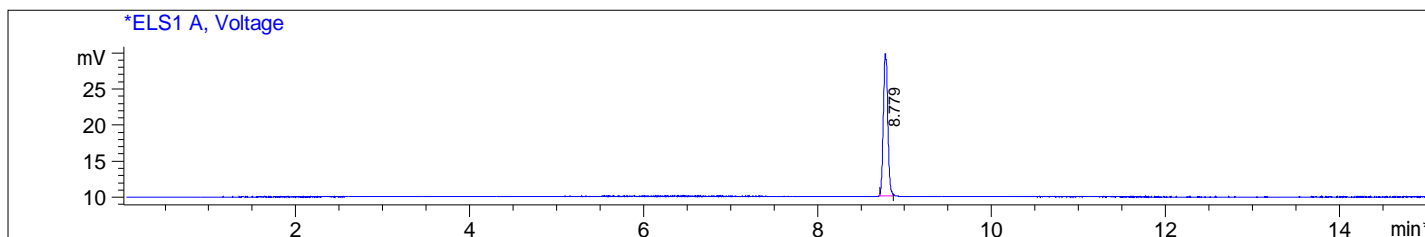


File D:\DATA\BACKUP\RAWDATA\A02\LCMS\MONITOR\2016-05\2016-05-12\910232-84-7-03665-LCMSA02
 Injection Date : 12 May 16 6:15 pm +0800 Tgt Mass(EZX) :
 Sample Name : 910232-84-7 Location : P2-A-02
 Acq. Operator : A02-Monitor Inj : 1
 Spec. Reported : MS Integration Inj Volume : 1.5 ul
 Acq. Method : C:\CHEM32\1\METHODS\2-HPLC-15MIN.M
 Analysis Method : C:\CHEM32\1\METHODS\2-HPLC-15MIN.M
 Sample Info : Easy-Access Method: '2-HPLC-15MIN'
 Method Info : Mobile phase: A 0.05%TFA in water B 0.05%TFA in ACN
 Gradient: 5%B for 2min,5% increase to 95%B within 7min, 95%B for 6min.
 Flow Rate: 1.2 ml/min
 Column: Eclipse XDB-C18,5um,4.6*150mm
 Column Temperature:40 C
 Detection:UV(214,4nm) and MS(ESI,Pos mode,110 to 1500 amu)



Integration Results for ELS1 A, Voltage

| RetTim | Width | Area | Height | Area% |
|--------|-------|-------|--------|--------|
| 8.78 | 0.05 | 69.88 | 19.69 | 100.00 |

Integration Results for DAD1 A, Sig=214,4 Ref=off

| RetTim | Width | Area | Height | Area% |
|--------|-------|---------|---------|-------|
| 8.75 | 0.05 | 4775.08 | 1519.29 | 98.45 |
| 8.84 | 0.04 | 75.39 | 32.17 | 1.55 |

Integration Results for DAD1 B, Sig=254,4 Ref=off

| RetTim | Width | Area | Height | Area% |
|--------|-------|---------|---------|-------|
| 8.75 | 0.05 | 3202.81 | 1047.87 | 98.46 |
| 8.84 | 0.04 | 49.96 | 21.11 | 1.54 |

Ret. Time: 8.78

<<<< POSITIVE SPECTRA >>>>

