

File D:\DATA

Injection Date : 05-Aug-14, 06:45:45

Sample Name : 863031-21-4

Location :

Acq. Operator : HPLC

Inj :

Spec. Reported : MS Integration

Inj Volume : 0.5 ul

Acq. Method : C:\Chem32\1\METHODS\2-HPLC-15MIN.M

Analysis Method : C:\Chem32\1\METHODS\2-HPLC-15MIN.M

Sample Info :

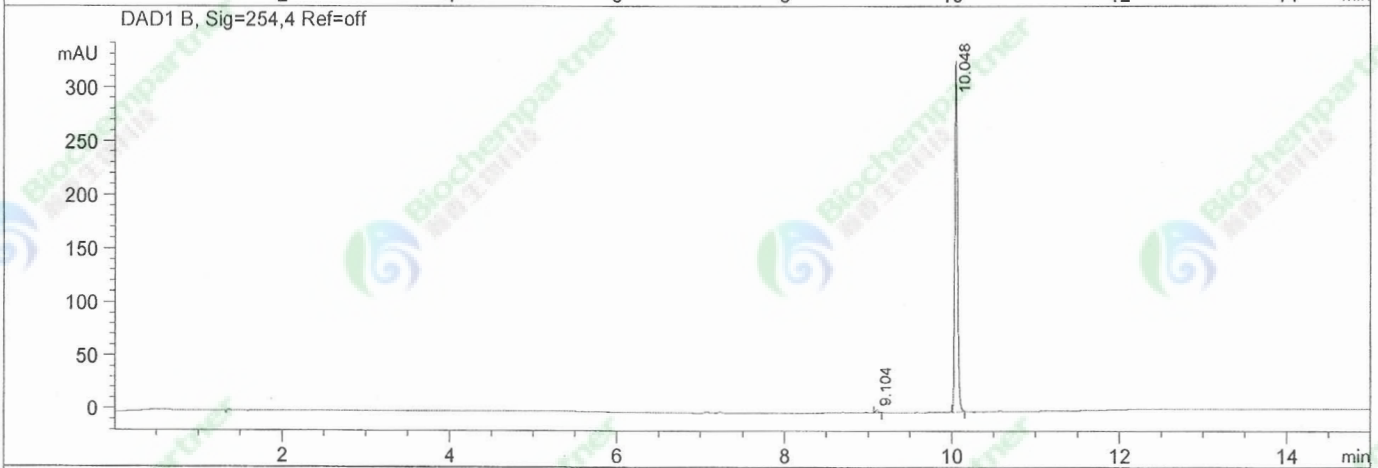
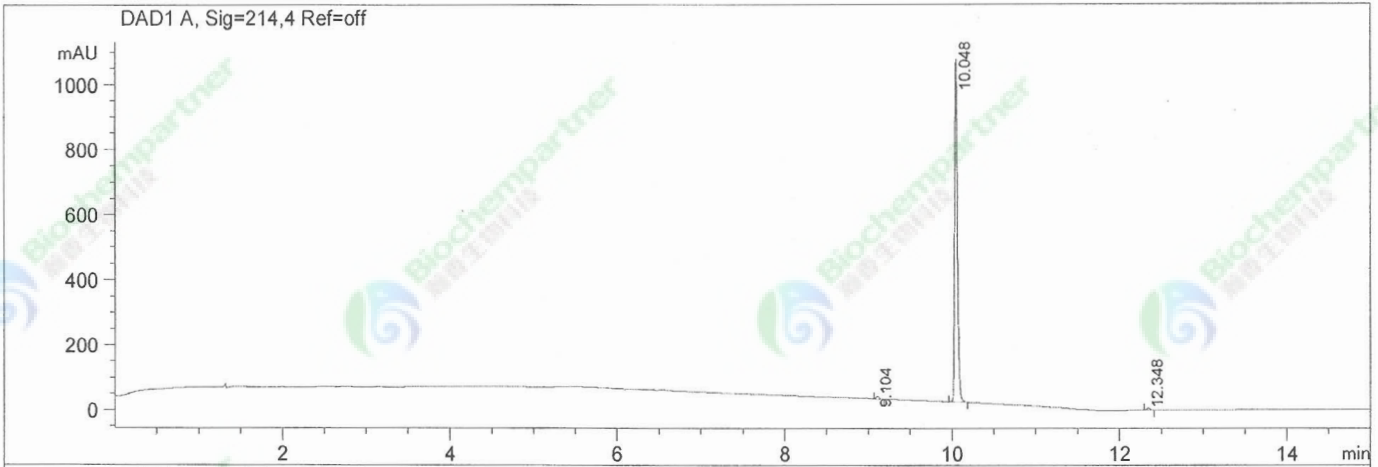
Method Info : Mobile Phase: A: water(0.01%TFA) B: ACN(0.01%TFA)

Gradient: 0min 5%B,3min 5%B,10min 95%B,15min 95%B

Flow Rate: 1.2 ml/min

Column: Eclipse XDB-C18,4.6*150mm,5um

Oven Temperature: 40 C



Integration Results for DAD1 A, Sig=214,4 Ref=off

RetTim	Width	Area	Height	Area%
9.10	0.04	21.86	9.03	0.90
10.05	0.03	2400.47	1055.07	98.34
12.35	0.04	18.61	7.31	0.76

Integration Results for DAD1 B, Sig=254,4 Ref=off

RetTim	Width	Area	Height	Area%
9.10	0.03	6.62	2.86	0.89
10.05	0.03	741.68	327.17	99.11