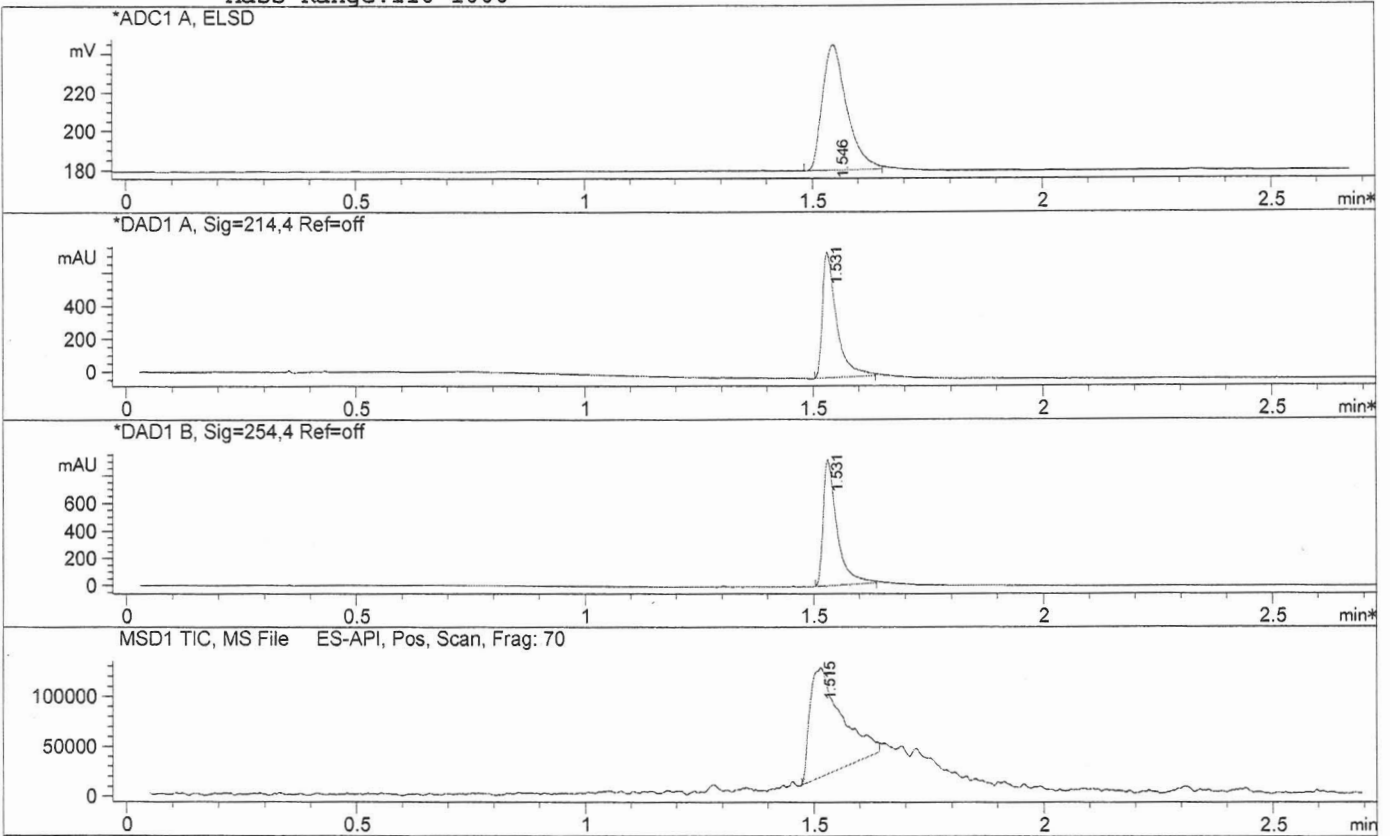


LC/MS Report

File D:\DATA  
 Injection Date : 17 Apr 14 10:11 am +0800 Tgt Mass (EZK) :  
 Sample Name : 781613-23-8 2014041603 Location : P1-A-04  
 Acq. Operator : Monitor Inj : 1  
 Spec. Reported : MS Integration Inj Volume : 0.8 ul  
 Acq. Method : D:\METHODS\1-POS-MON.M  
 Analysis Method : D:\METHODS\1-POS-MON.M  
 Sample Info : Easy-Access Method: '1-POS-MON'  
 Method Info : Mobile Phase: A: water(10mMNH4HCO3) B: ACN  
 Gradient: 5%B increase to 95%B within1.2min,  
 95%B for 1.3min,back to 5%B within 0.01min.  
 Flow Rate: 2 mL/min  
 Column: XBridge, 3.5um, 50\*4.6mm  
 Oven Temperature: 50 C  
 Mass Range:110-1000



Integration Results for ADC1 A, ELSD

RetTim	Width	Area	Height	Area%
1.55	0.06	237.03	64.57	100.00

Integration Results for DAD1 A, Sig=214,4 Ref=off

RetTim	Width	Area	Height	Area%
1.53	0.03	1626.69	760.26	100.00

Integration Results for DAD1 B, Sig=254,4 Ref=off

RetTim	Width	Area	Height	Area%
1.53	0.03	1928.05	916.08	100.00

Ret. Time: 1.52

<<<< POSITIVE SPECTRA >>>>

