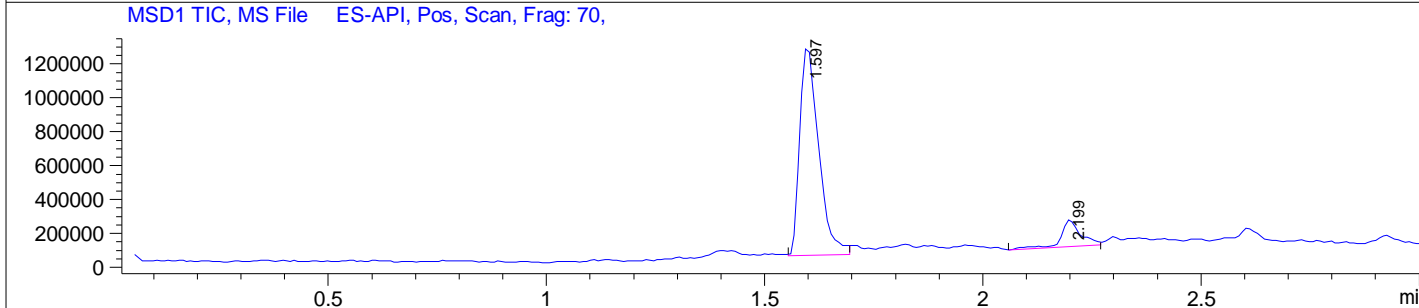
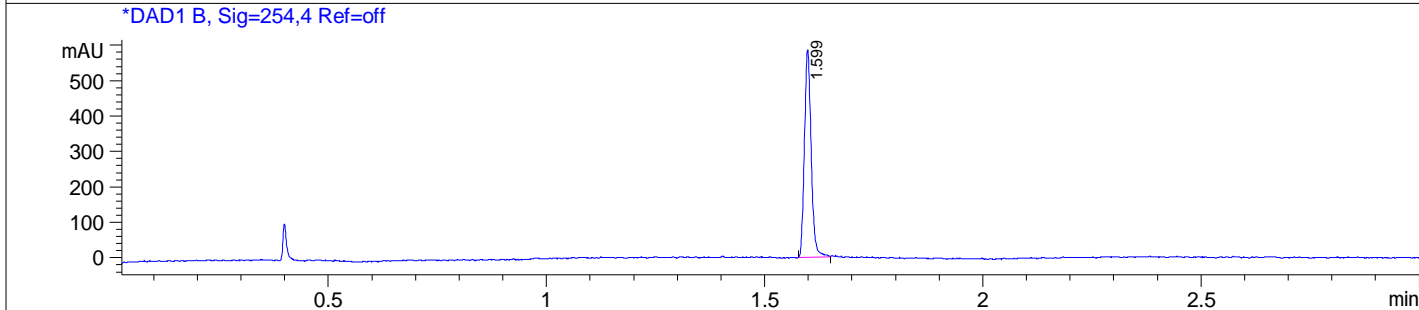
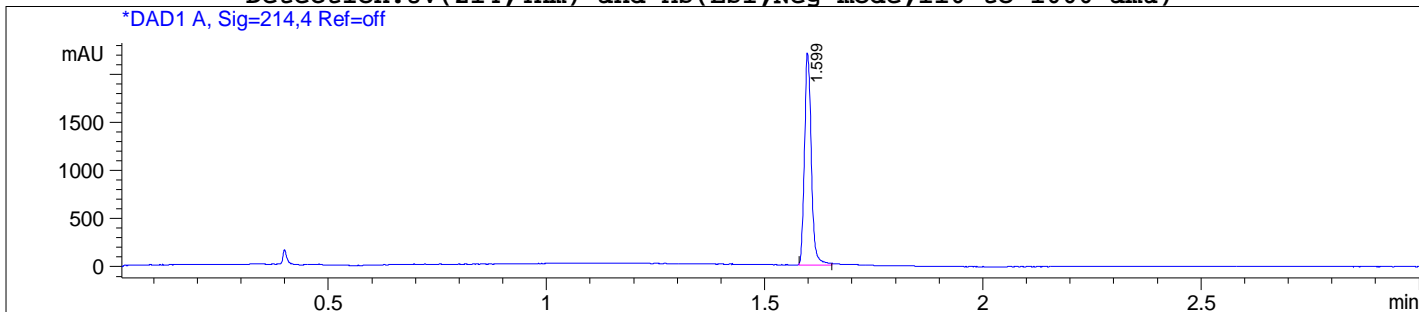


File D:\DATA\1-B-LCMS.D

Injection Date : 21 Mar 16 1:35 pm +0800 Tgt Mass(EZX) :  
 Sample Name : 1 Location : P1-A-07  
 Acq. Operator : LCMS Inj : 1  
 Spec. Reported : MS Integration Inj Volume : 1.66 ul  
 Acq. Method : C:\CHEM32\1\METHODS\1-POS-3MIN.M  
 Analysis Method : C:\CHEM32\1\METHODS\1-POS-3MIN.M  
 Sample Info : Easy-Access Method: '1-POS-3MIN'  
 Method Info : Mobile Phase: A:Water(10mM NH4HCO3) B:ACN  
 Gradient: 5% increase to 95%B within 1.4min,  
 95%B for 1.6min,back to 5%B within 0.01min  
 Flow Rate: 1.80ml/min  
 Column: XBridge C18,4.6\*50mm,3.5um  
 Column Temperature: 40 C

Detection:UV(214,4nm) and MS(ESI,Neg mode,110 to 1000 amu)



Integration Results for DAD1 A, Sig=214,4 Ref=off

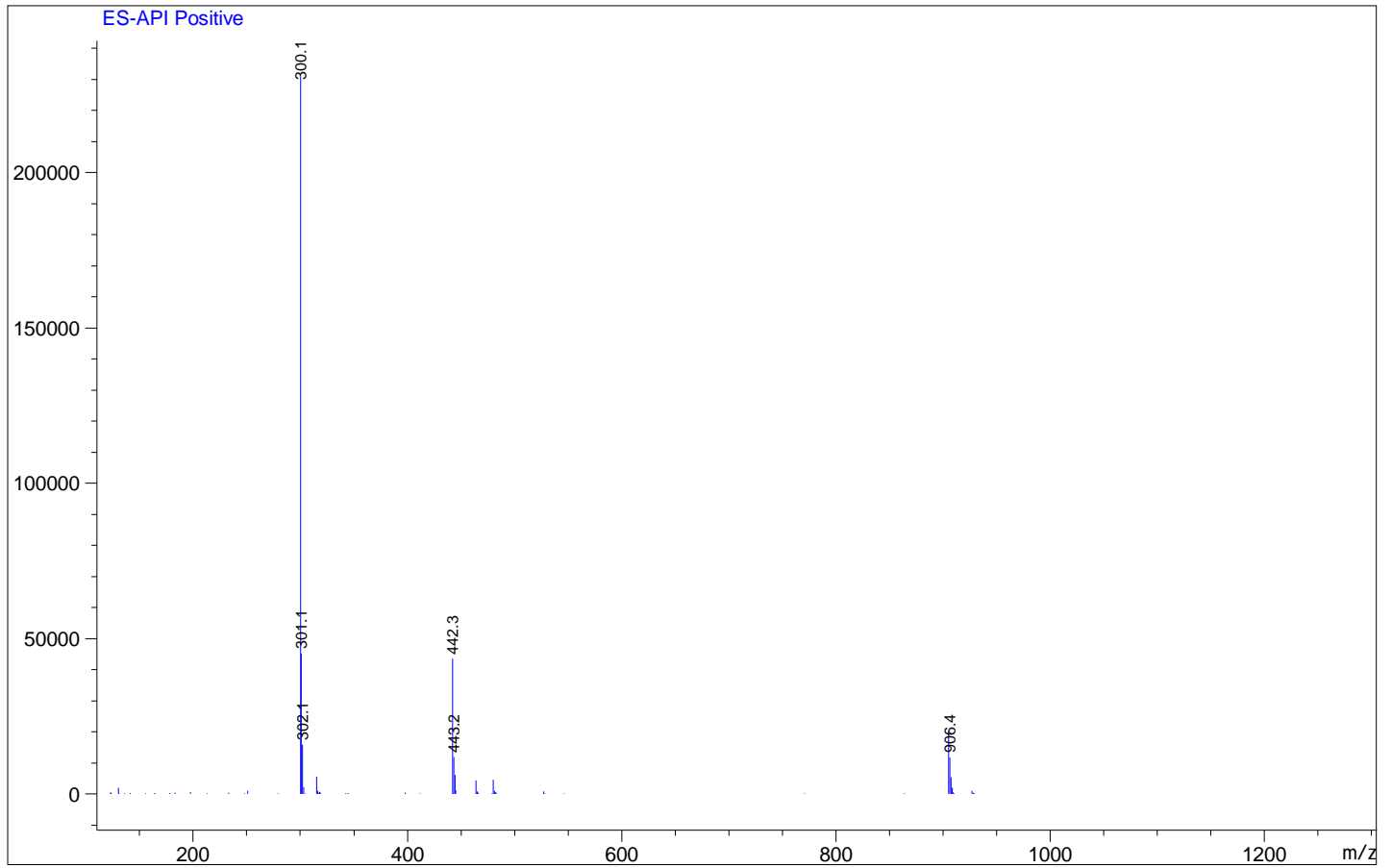
RetTim	Width	Area	Height	Area%
1.60	0.02	2394.45	2198.92	100.00

Integration Results for DAD1 B, Sig=254,4 Ref=off

RetTim	Width	Area	Height	Area%
1.60	0.02	627.37	585.82	100.00

Ret. Time: 1.60

<<<< POSITIVE SPECTRA >>>>



Ret. Time: 2.20

