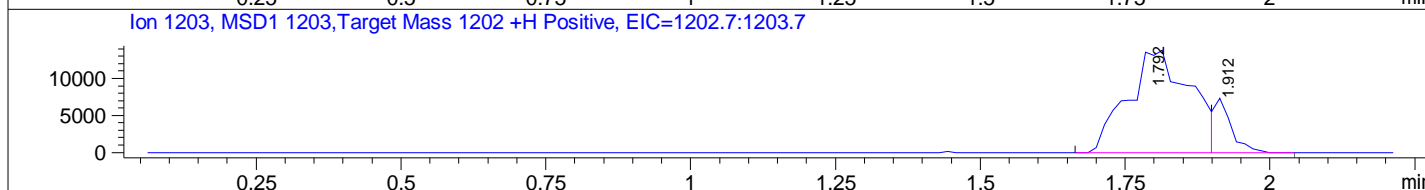
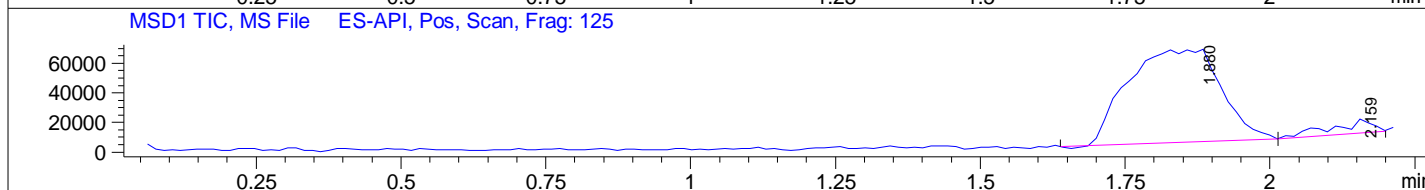
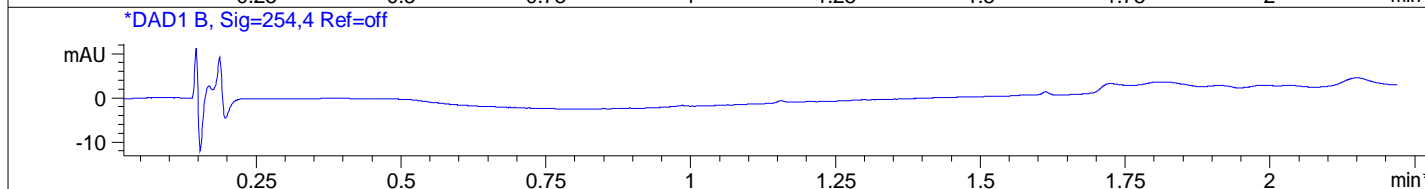
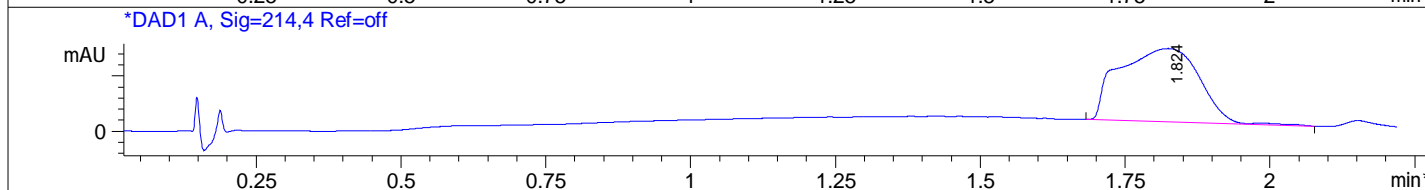
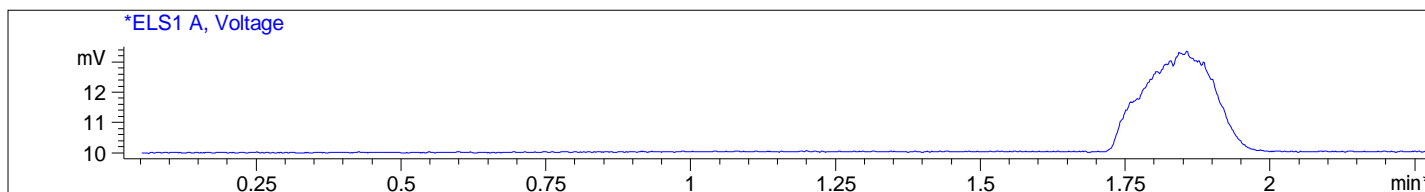


File D:\DATA\A02\MONITOR\59865-13-3-01679-LCMSA028.D  
 Injection Date : 20 Apr 16 4:26 pm +0800 Tgt Mass(EZX) : 1202.00  
 Sample Name : 59865-13-3 Location : P1-A-01  
 Acq. Operator : A02-Monitor Inj : 1  
 Spec. Reported : MS Integration Inj Volume : 0.8 ul  
 Acq. Method : C:\CHEM32\1\METHODS\1-POS-3MIN-1500.M  
 Analysis Method : C:\CHEM32\1\METHODS\1-POS-3MIN-1500.M  
 Sample Info : Easy-Access Method: '1-POS-3MIN-1500' 1202.00  
 Method Info : Mobile phase: A 0.05%TFA in water B 0.05%TFA in ACN  
 Gradient: 5% increase to 100%B within 1.5min, 100%B for 0.5min.  
 Flow Rate: 1.5 ml/min  
 Column: Sunfire C18,3.0\*30mm,2.5um  
 Column Temperature: 40 C  
 Detection:UV(214,4nm) and MS(ESI,Pos mode,110 to 1500 amu)



Integration Results for ELS1 A, Voltage

RetTim	Width	Area	Height	Area%
1.82	0.14	1282.11	132.80	100.00

Integration Results for DAD1 A, Sig=214,4 Ref=off

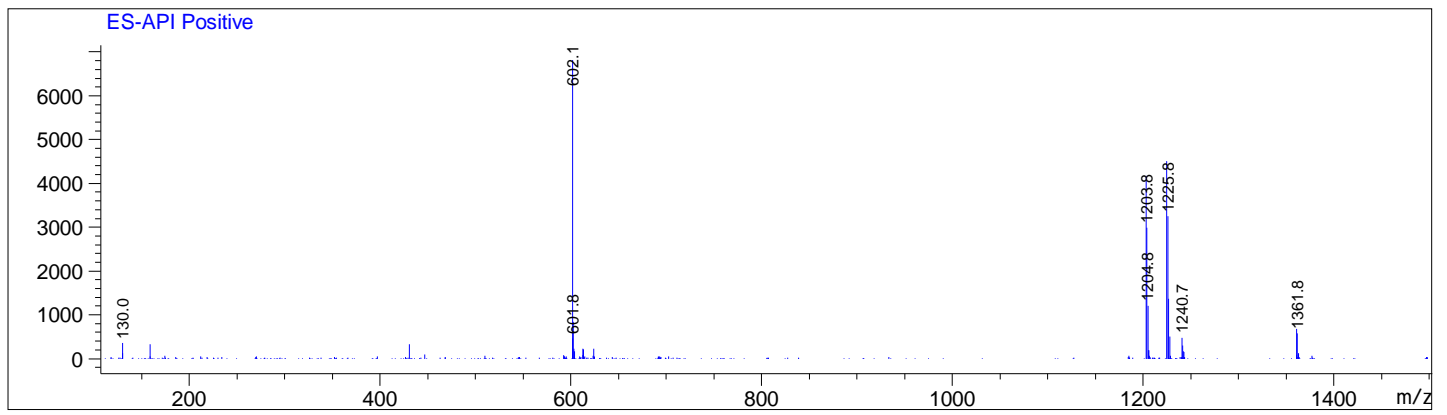
RetTim	Width	Area	Height	Area%
1.82	0.14	1282.11	132.80	100.00

Integration Results for DAD1 B, Sig=254,4 Ref=off

RetTim	Width	Area	Height	Area%

Ret. Time: 1.88

<<<< POSITIVE SPECTRA >>>>



Ret. Time: 2.16

