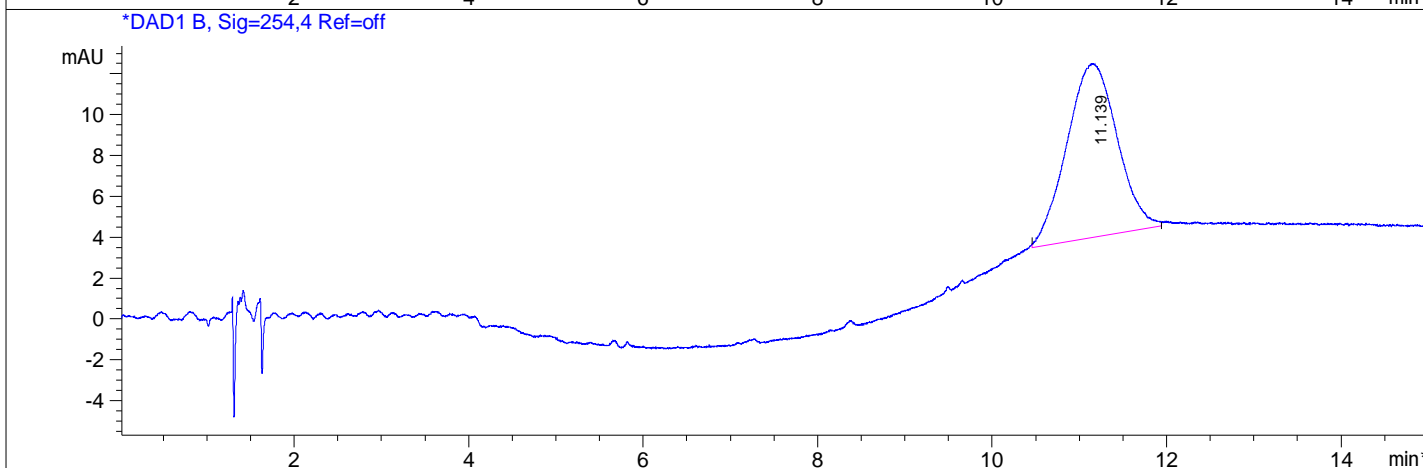
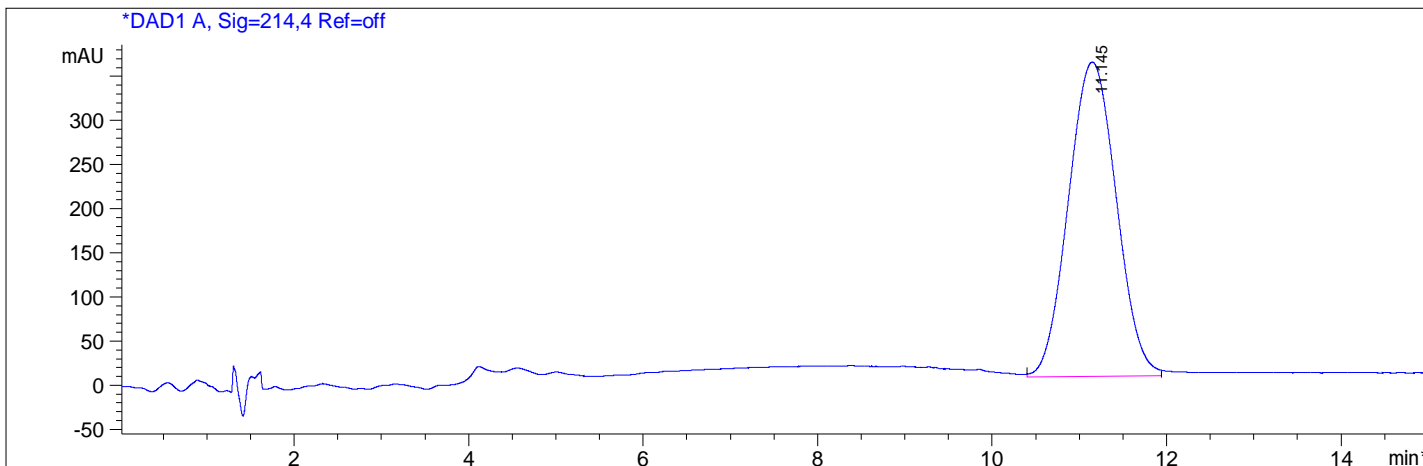


File D:\DATA\A02\MONITOR\59865-13-3-01828-LCMSA028.D
 Injection Date : 21 Apr 16 6:35 pm +0800 Tgt Mass(EZX) :
 Sample Name : 59865-13-3 Location : P1-E-08
 Acq. Operator : A02-Monitor Inj : 1
 Spec. Reported : MS Integration Inj Volume : 3 ul
 Acq. Method : C:\CHEM32\1\METHODS\2-HPLC-15MIN.M
 Analysis Method : C:\CHEM32\1\METHODS\2-HPLC-15MIN.M
 Sample Info : Easy-Access Method: '2-HPLC-15MIN'
 Method Info : Mobile phase: A 0.05%TFA in water B 0.05%TFA in ACN
 Gradient: 5%B for 2min,5% increase to 95%B within 7min, 95%B for 6min.
 Flow Rate: 1.2 ml/min
 Column: Eclipse XDB-C18,5um,4.6*150mm
 Column Temperature:40 C
 Detection:UV(214,4nm) and MS(ESI,Pos mode,110 to 1500 amu)



Integration Results for DAD1 A, Sig=214,4 Ref=off

RetTim	Width	Area	Height	Area%
11.15	0.63	13555.13	355.88	100.00

Integration Results for DAD1 B, Sig=254,4 Ref=off

RetTim	Width	Area	Height	Area%
11.14	0.67	341.17	8.53	100.00