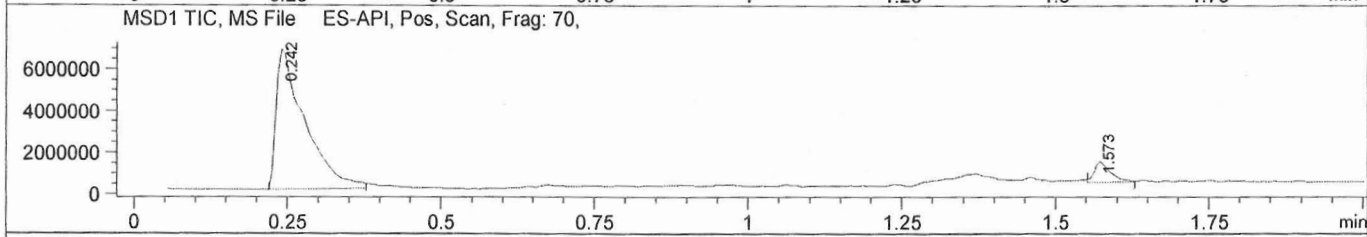
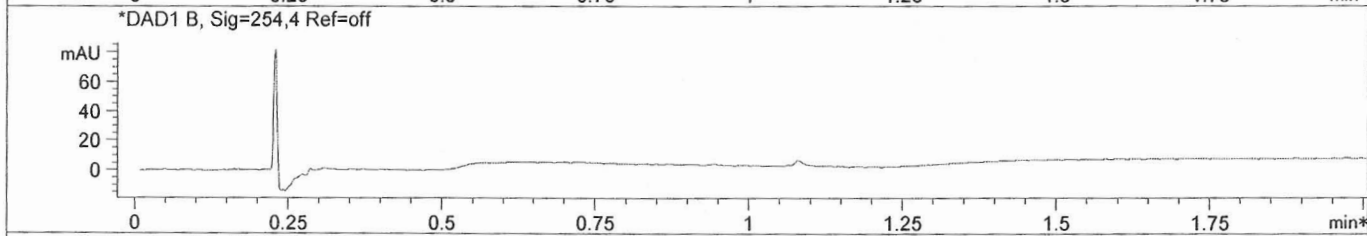
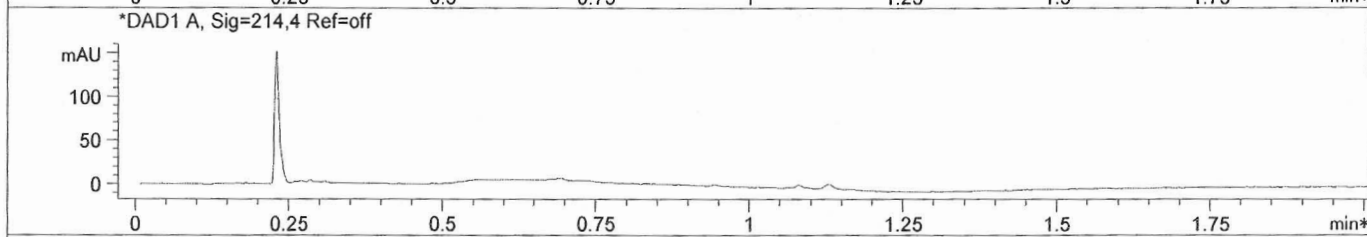
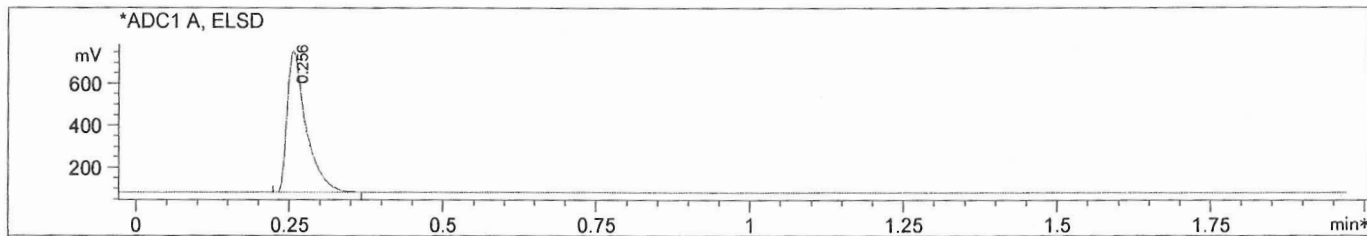


LC/MS Report

```

File D:\DATA
Injection Date   : 23 Jun 14   06:45 pm
Sample Name     : 59378-87-9
Acq. Operator  : XXXX
Spec. Reported  : MS Integration
Acq. Method    : C:\Chem32\1\METHODS\1-POS-2MIN.M
Analysis Method : C:\Chem32\1\METHODS\1-POS-2MIN.M
Sample Info    : Easy-Access Method: '1-POS-2MIN'
Method Info    : Mobile Phase: A: Water(0.01%TFA) B: ACN(0.01%TFA)
                  Gradient: 5%B increase to 100%B within 0.8min,100%B for 1.1min.
                  Flow Rate:1.5mL/min
                  Column: Chromolith Fast Gradien RP-18e,50-3mm.
                  Column Temperature: 40C
                  Mass Range:100-1100
    
```



Integration Results for ADC1 A, ELSD

RetTim	Width	Area	Height	Area%
0.26	0.03	1452.54	675.92	100.00

Integration Results for DAD1 A, Sig=214,4 Ref=off

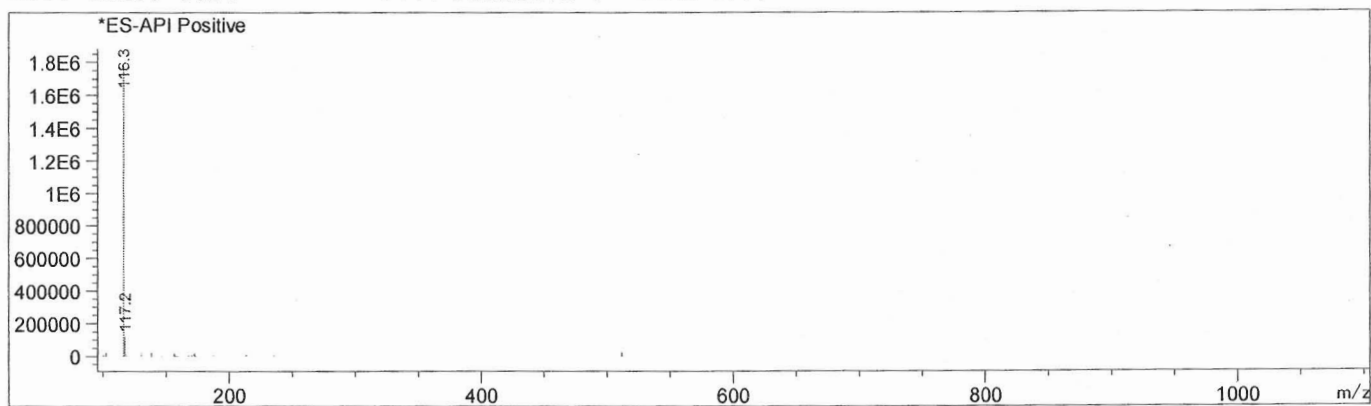
RetTim	Width	Area	Height	Area%

Integration Results for DAD1 B, Sig=254,4 Ref=off

RetTim	Width	Area	Height	Area%

Ret. Time: 0.24

<<<< POSITIVE SPECTRA >>>>



Ret. Time: 1.57

