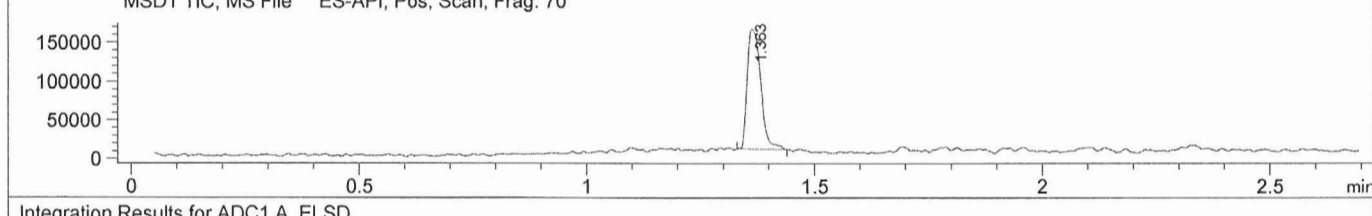
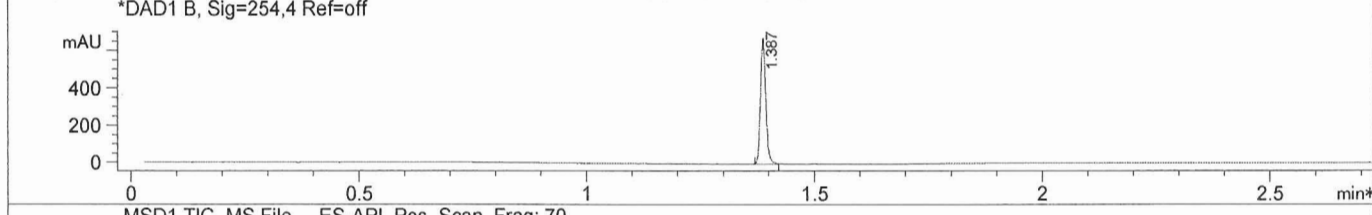
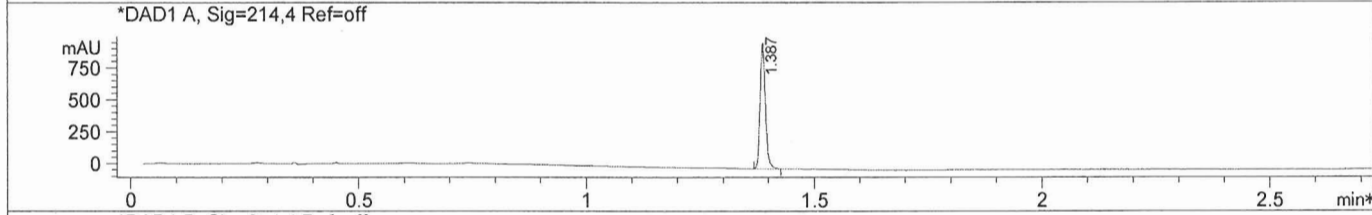
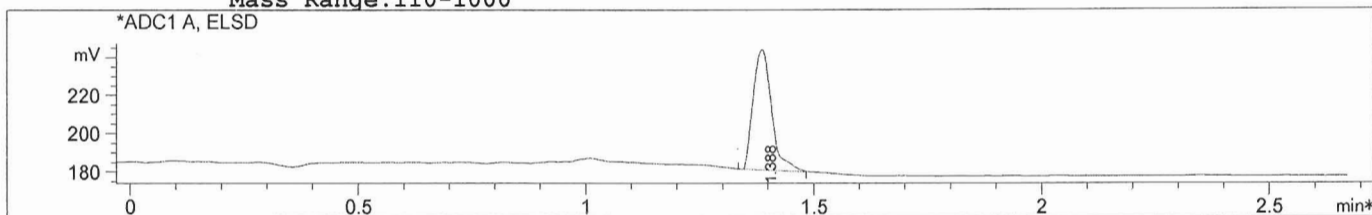


LC/MS Report

```

File D:\DATA\
Injection Date   : 31 Mar 14   4:36 pm +0800           Tgt Mass (EZ) :
Sample Name     : 356559-20-1 2014033108           Location  : P1-D-01
Acq. Operator   : Monitor                               Inj   : 1
Spec. Reported  : MS Integration                       Inj Volume : 1 ul
Acq. Method     : D:\METHODS\1-POS-MON.M
Analysis Method : D:\METHODS\1-POS-MON.M
Sample Info    : Easy-Access Method: '1-POS-MON'
Method Info    : Mobile Phase: A: water(10mMNH4HCO3)  B: ACN
                  Gradient: 5%B increase to 95%B within1.2min,
                  95%B for 1.3min,back to 5%B within 0.01min.
                  Flow Rate: 2 mL/min
                  Column: XBridge, 3.5um, 50*4.6mm
                  Oven Temperature: 50 C
                  Mass Range:110-1000
    
```



Integration Results for ADC1 A, ELSD

RetTim	Width	Area	Height	Area%
1.39	0.05	177.93	63.29	100.00

Integration Results for DAD1 A, Sig=214,4 Ref=off

RetTim	Width	Area	Height	Area%
1.39	0.01	793.81	988.66	100.00

Integration Results for DAD1 B, Sig=254,4 Ref=off

RetTim	Width	Area	Height	Area%
1.39	0.01	546.46	682.26	100.00

LC/MS Report

Ret. Time: 1.36

<<<< POSITIVE SPECTRA >>>>

