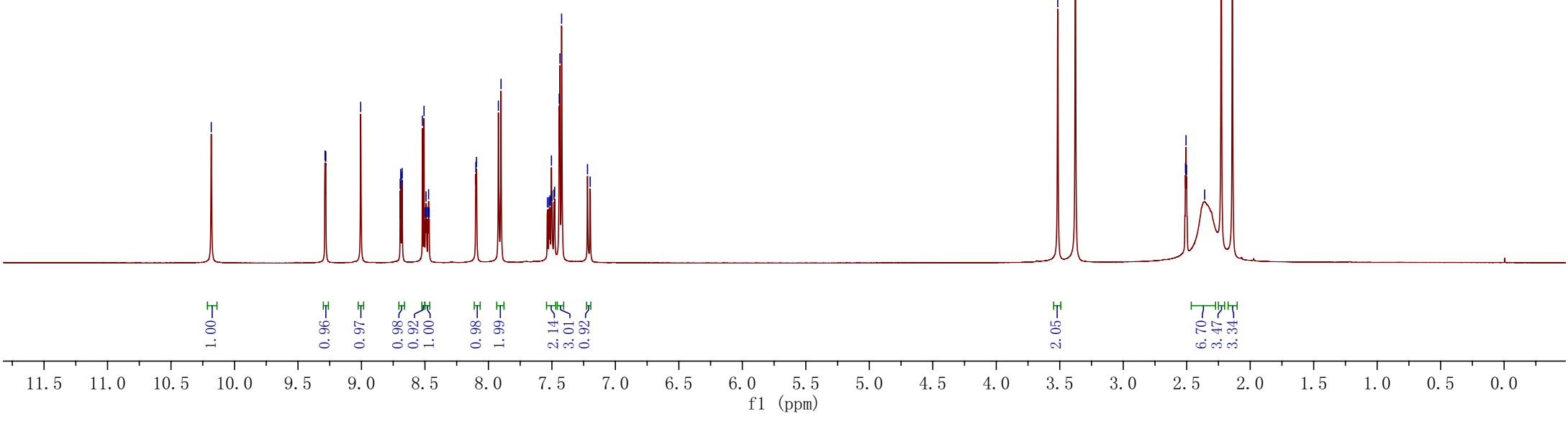


— 10.18

9.29
9.28
9.28
9.01
8.69
8.68
8.68
8.52
8.51
8.09
7.92
7.90
7.54
7.52
7.52
7.50
7.50
7.48
7.48
7.44
7.44
7.42
7.22
7.20
7.52
7.51
7.50
7.50
7.48
7.48
7.44
7.44
7.42
7.22
7.20

— 3.52
— 3.38

2.51
2.51
2.50
2.36
2.23
2.14



1.00

0.96

0.97

0.98

0.92

1.00

0.98

1.99

2.14

3.01

0.92

2.05

6.70

3.47

3.34