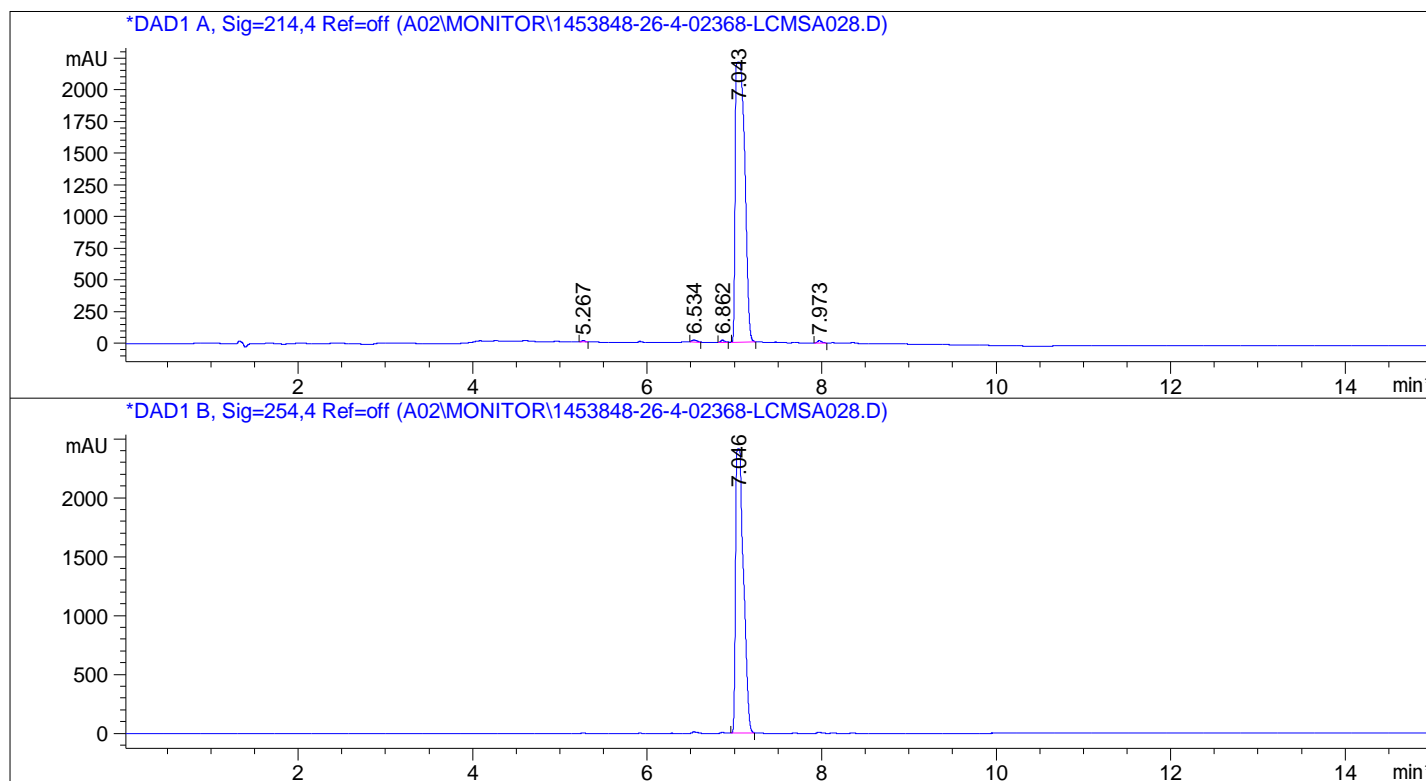


Sample Name: 1453848-26-4

=====

Acq. Operator : A02-Monitor  
Acq. Instrument : LCMSA028 Location : P2-A-04  
Injection Date : 04/27/2016 5:58:56 PM Inj : 1  
Inj Volume : 2 µl  
Acq. Method : C:\CHEM32\1\METHODS\2-HPLC-15MIN.M  
Last changed : 04/27/2016 5:58:32 PM by A02-Monitor  
(modified after loading)  
Analysis Method : C:\CHEM32\1\METHODS\2-HPLC-15MIN.M  
Last changed : 04/28/2016 8:54:42 AM by A02-Monitor  
(modified after loading)  
Method Info : Mobile phase: A 0.05%TFA in water B 0.05%TFA in ACN  
Gradient: 5%B for 2min,5% increase to 95%B within 7min, 95%B for  
6min.  
Flow Rate: 1.2 ml/min  
Column: Eclipse XDB-C18,5µm,4.6\*150mm  
Column Temperature:40 C  
Detection:UV(214,4nm) and MS(ESI,Pos mode,110 to 1500 amu)

Sample Info : Easy-Access Method: '2-HPLC-15MIN'



Sample Name: 1453848-26-4

=====  
Area Percent Report  
=====

Sorted By : Signal  
Multiplier : 1.0000  
Dilution : 1.0000  
Use Multiplier & Dilution Factor with ISTDs

Signal 1: DAD1 A, Sig=214,4 Ref=off

Signal has been modified after loading from rawdata file!

Peak #	RetTime [min]	Type	Width [min]	Area [mAU*s]	Height [mAU]	Area %
1	5.267	BB	0.0387	27.94696	10.60684	0.1667
2	6.534	BB	0.0527	68.24938	18.02716	0.4070
3	6.862	BB	0.0421	55.53498	18.97251	0.3312
4	7.043	BB	0.0890	1.65518e4	2207.77441	98.7135
5	7.973	BB	0.0497	63.98429	19.06135	0.3816

Totals : 1.67675e4 2274.44227

Signal 2: DAD1 B, Sig=254,4 Ref=off

Signal has been modified after loading from rawdata file!

Peak #	RetTime [min]	Type	Width [min]	Area [mAU*s]	Height [mAU]	Area %
1	7.046	BB	0.0846	1.51394e4	2415.29248	100.0000

Totals : 1.51394e4 2415.29248

=====  
\*\*\* End of Report \*\*\*