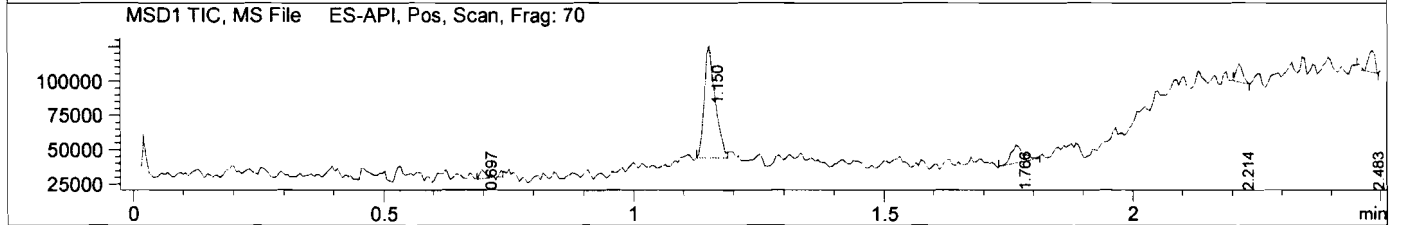
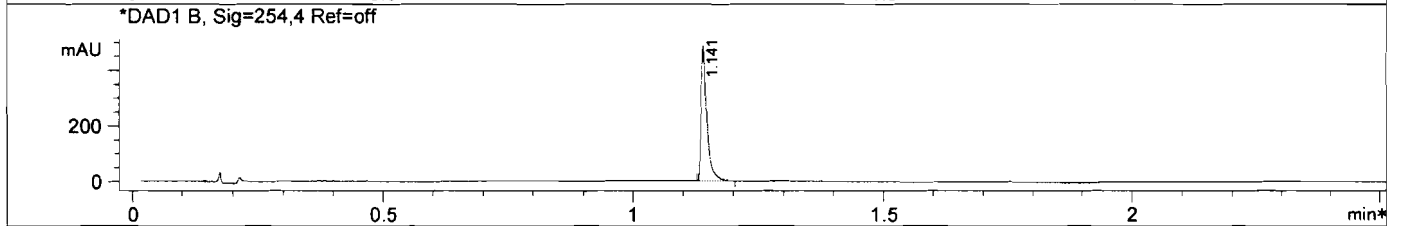
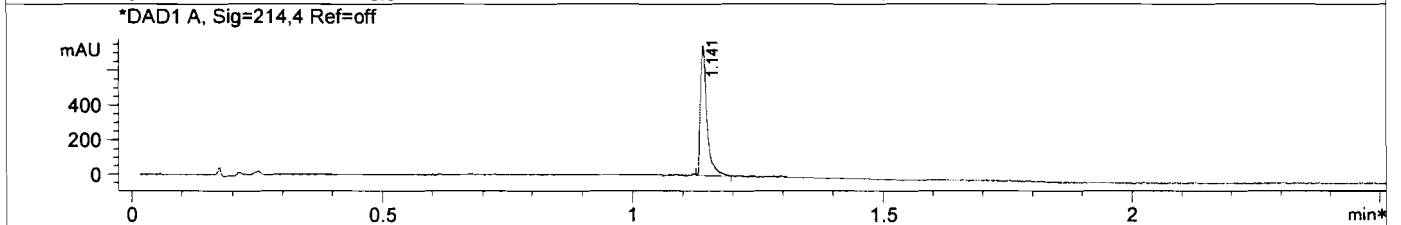
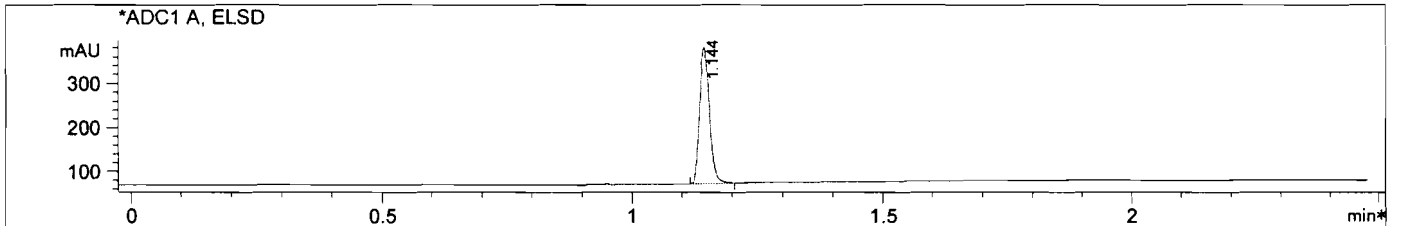


LC/MS Report

File D:\DATA\MONITOR\124182-57-6-LCMS.D
 Injection Date : 10 Jan 13 3:48 pm +0800 Tgt Mass (EZX) :
 Sample Name : 124182-57-6 Location : P1-A-07
 Acq. Operator : LCMS Inj : 1
 Spec. Reported : MS Integration Inj Volume : 1 ul
 Acq. Method : D:\METHODS\1-POS-3MIN.M
 Analysis Method : D:\METHODS\1-POS-3MIN.M
 Sample Info : *** No target masses specified ***
 Method Info : Mobile Phase: A: water(0.01%TFA) B: ACN(0.01%TFA)
 Gradient: 5%-95% B in 1.2min
 Flow Rate: 2.2 ml/min
 Column: Poroshell 120 EC-C18, 4.6*30mm, 2.7um
 Oven Temperature: 50 C
 Mass Range: 110-800



Integration Results for ADC1 A, ELSD

RetTim	Width	Area	Height	Area%
1.14	0.02	425.28	308.91	100.00

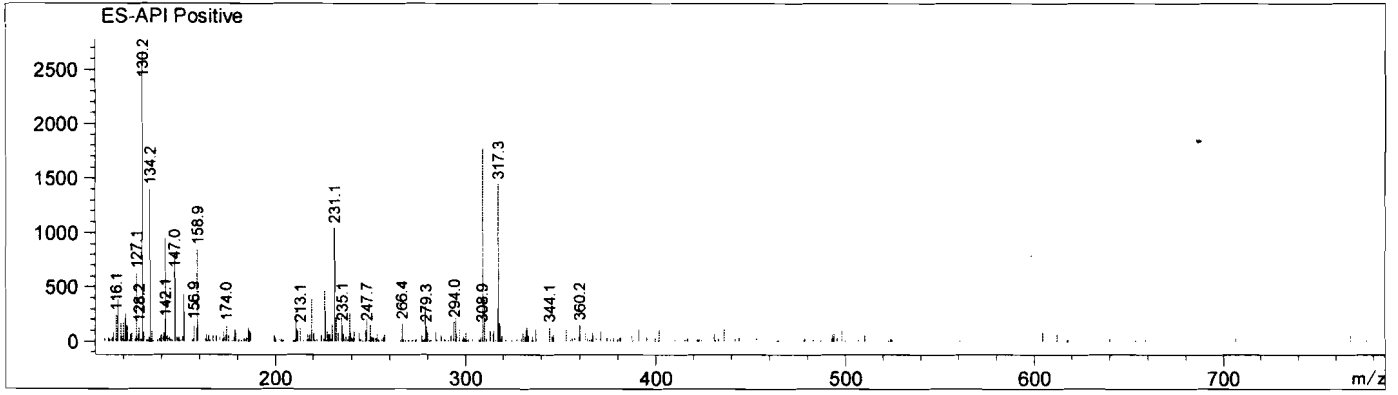
Integration Results for DAD1 A, Sig=214,4 Ref=off

RetTim	Width	Area	Height	Area%
1.14	0.01	697.88	746.25	100.00

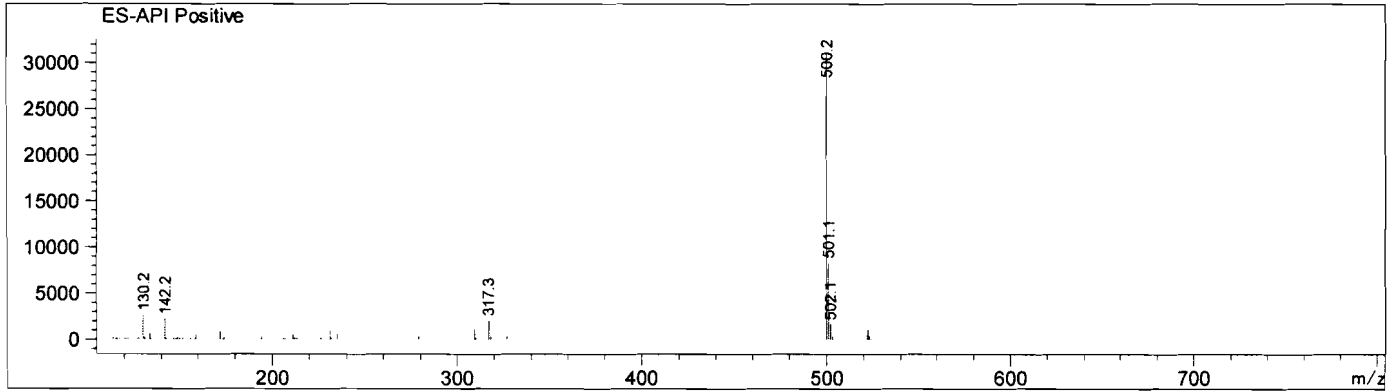
Integration Results for DAD1 B, Sig=254,4 Ref=off

RetTim	Width	Area	Height	Area%
1.14	0.01	407.65	487.82	100.00

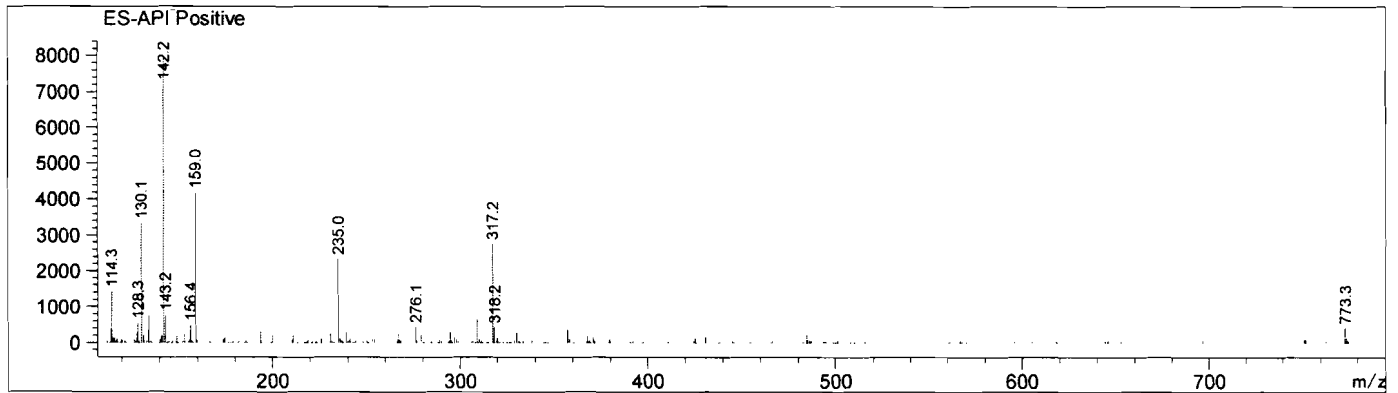
Ret. Time: 0.70 <<<< POSITIVE SPECTRA >>>>



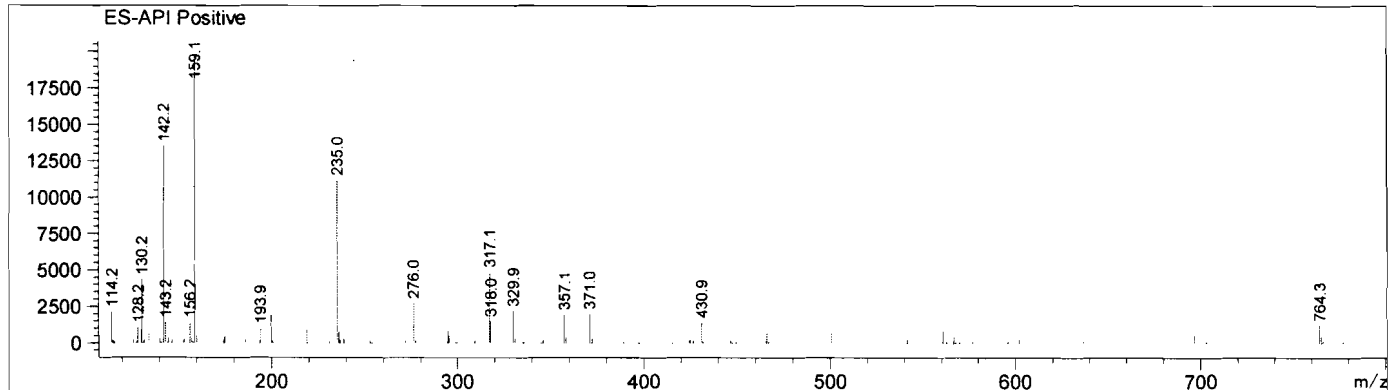
Ret. Time: 1.15



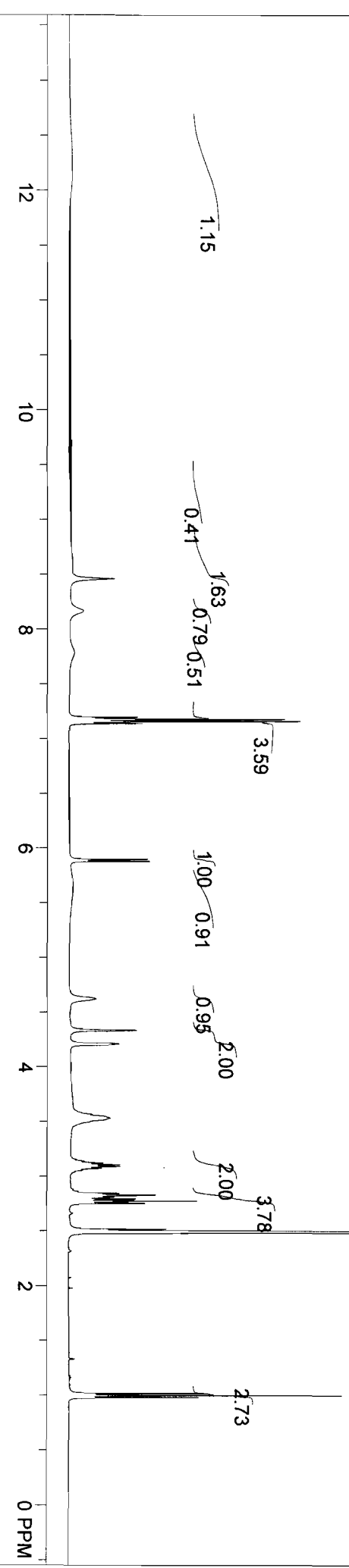
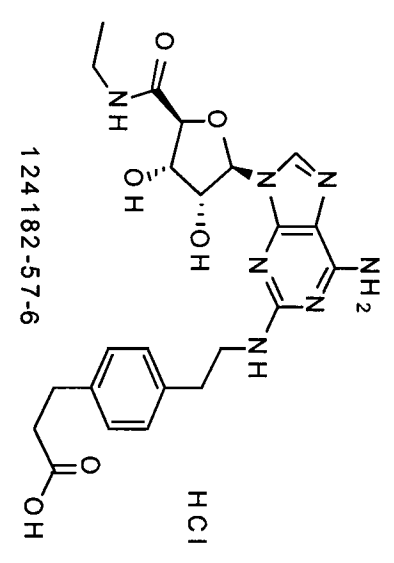
Ret. Time: 1.77



Ret. Time: 2.21



- 8.461
- 8.170
- 7.198
- 7.178
- 7.161
- 7.140
- 5.899
- 5.882
- 4.336
- 4.211
- 4.627
- 3.569
- 3.534
- 3.142
- 3.125
- 3.108
- 3.093
- 3.076
- 3.059
- 2.847
- 2.830
- 2.812
- 2.794
- 2.775
- 2.755
- 2.519
- 2.498
- 2.494
- 2.490
- 1.017
- 0.998
- 0.981



NMRB003, DMSO, F1: 400.132, F2: 1.000, SW1: 8224, PW: 13.8 usec, PD: 1.0 sec, OF1: 2471.0, NA: 32, LB: 0.0, USER: mmmB601 -- DATE: Thu Jan 10 09:21:35 2013, PTSID: 32768, EX: zg30, Nuts - \$pdata