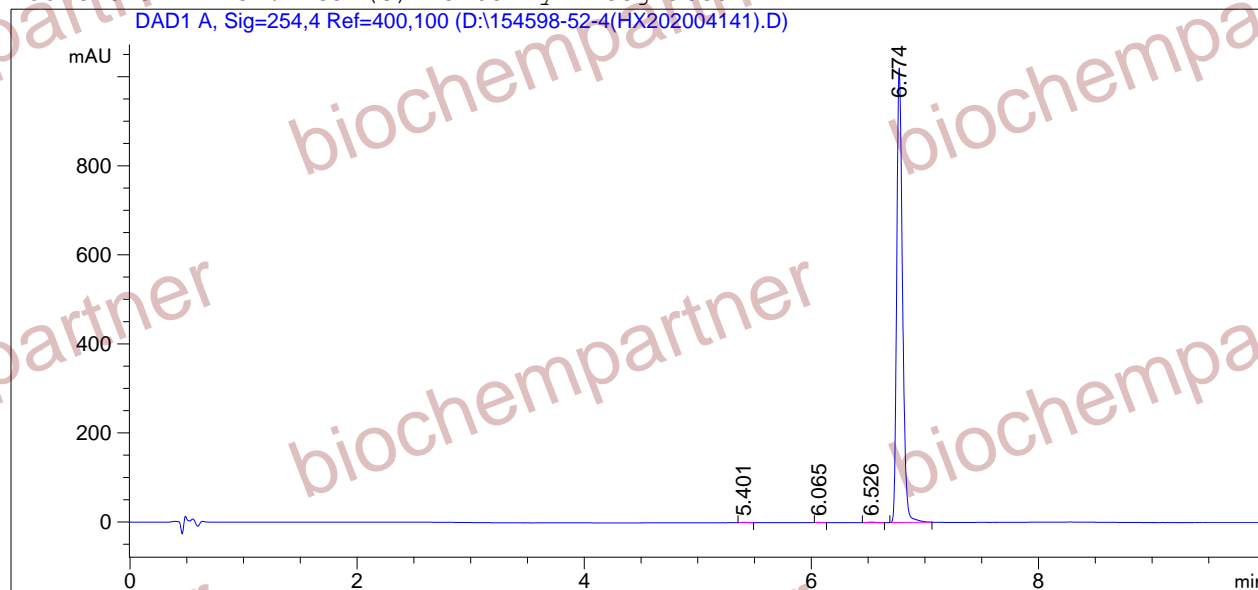


=====
Acq. Operator : Seq. Line : 1
Acq. Instrument : Instrument 1 Location : Vial 10
Injection Date : 4/15/2020 11:06:27 AM Inj : 1
Inj Volume : 3.0 µl
Different Inj Volume from Sequence ! Actual Inj Volume : 2.0 µl
Acq. Method : D:
Last changed : 6/6/2018 1:09:06 PM
Analysis Method : D:\CHEM32\1\1.M
Last changed : 4/15/2020 12:38:57 PM
(modified after loading)
Sample Info : [A = ACN, B = acid-1/H2O] 10-95% A/B 6 min, 95% A/B 4 min; Athena C18 (3 µm, 2
.1 mm * 100 mm); Flow: 0.45 ml/min, T = 25

Additional Info : Peak(s) manually integrated



=====
Area Percent Report
=====

Sorted By : Signal
Multiplier : 1.0000
Dilution : 1.0000
Use Multiplier & Dilution Factor with ISTDs

Signal 1: DAD1 A, Sig=254,4 Ref=400,100

Peak #	RetTime [min]	Type	Width [min]	Area [mAU*s]	Height [mAU]	Area %
1	5.401	BB	0.0445	2.36798	6.41869e-1	0.0653
2	6.065	BB	0.0352	1.55521	5.47013e-1	0.0429
3	6.526	BB	0.0558	4.56356	1.01834	0.1258
4	6.774	BB	0.0549	3619.55933	1020.72491	99.7661

Totals : 3628.04607 1022.93214

=====
*** End of Report ***