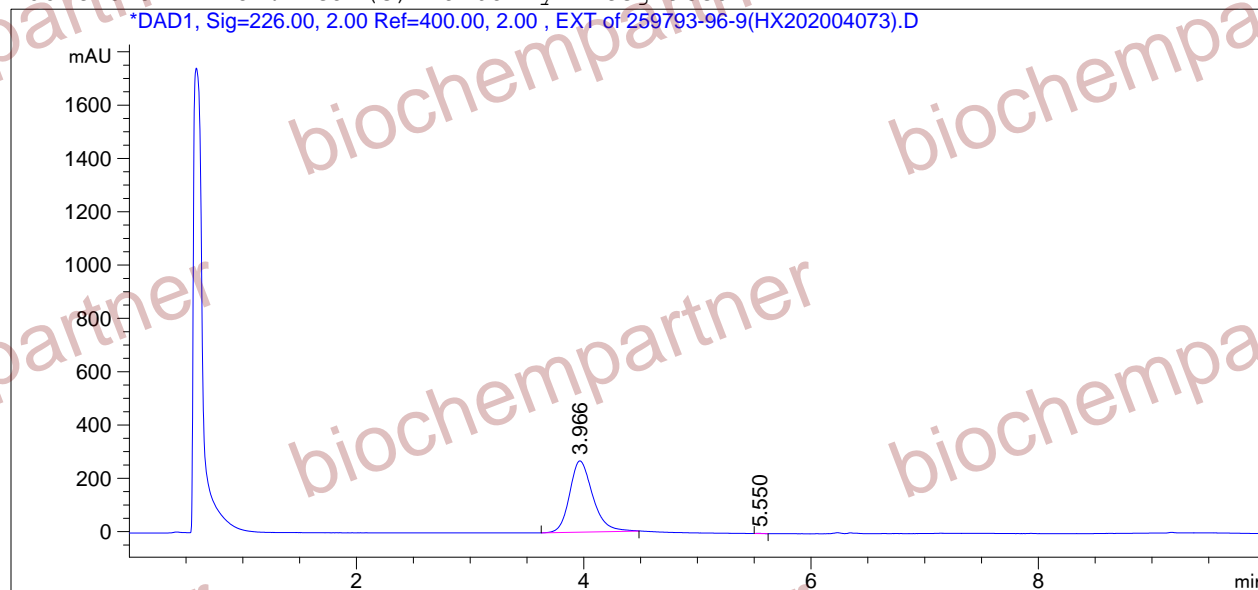


=====
Acq. Operator : Seq. Line : 2
Acq. Instrument : Instrument 1 Location : Vial 3
Injection Date : 4/9/2020 2:04:50 PM Inj : 1
Inj Volume : 3.0 µl
Different Inj Volume from Sequence ! Actual Inj Volume : 2.0 µl
Acq. Method : D:
Last changed : 6/6/2018 1:07:35 PM
Analysis Method : D:\CHEM32\1\1.M
Last changed : 4/9/2020 2:20:34 PM
(modified after loading)
Sample Info : [A = ACN, B = acid-1/H2O] 0% A/B 2 min, 0-95% A/B 5 min, 95% A/B 3 min; Athena
C18 (3 µm, 2.1 mm * 100 mm); Flow: 0.45 ml/min, T = 25

Additional Info : Peak(s) manually integrated



=====
Area Percent Report
=====

Sorted By : Signal
Multiplier : 1.0000
Dilution : 1.0000
Use Multiplier & Dilution Factor with ISTDs

Signal 1: DAD1, Sig=226.00, 2.00 Ref=400.00, 2.00 , EXT
Signal has been modified after loading from rawdata file!

| Peak # | RetTime [min] | Type | Width [min] | Area [mAU*s] | Height [mAU] | Area % |
|--------|---------------|------|-------------|--------------|--------------|---------|
| 1 | 3.966 | VB | 0.2007 | 3772.36206 | 267.23111 | 99.9372 |
| 2 | 5.550 | BB | 0.0400 | 2.37060 | 7.46874e-1 | 0.0628 |

Totals : 3774.73266 267.97798

=====
*** End of Report ***