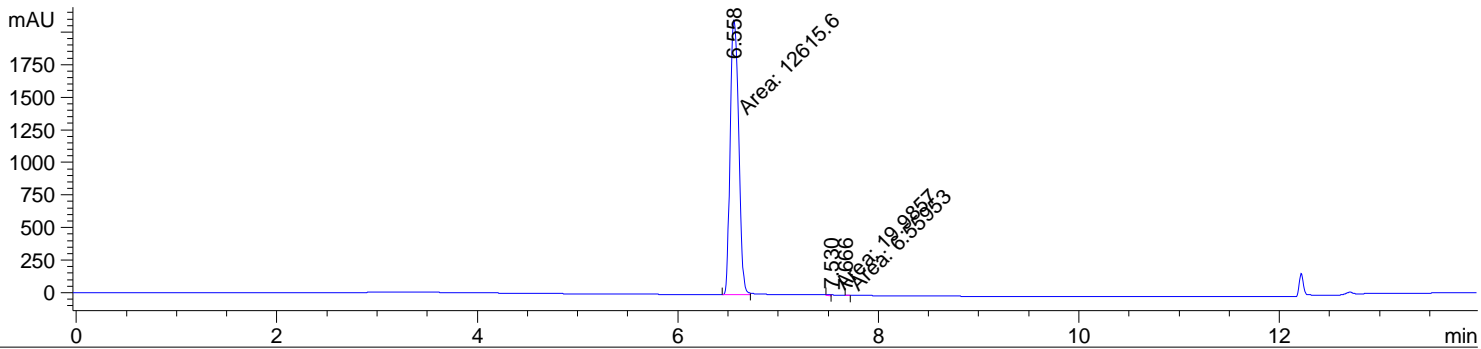


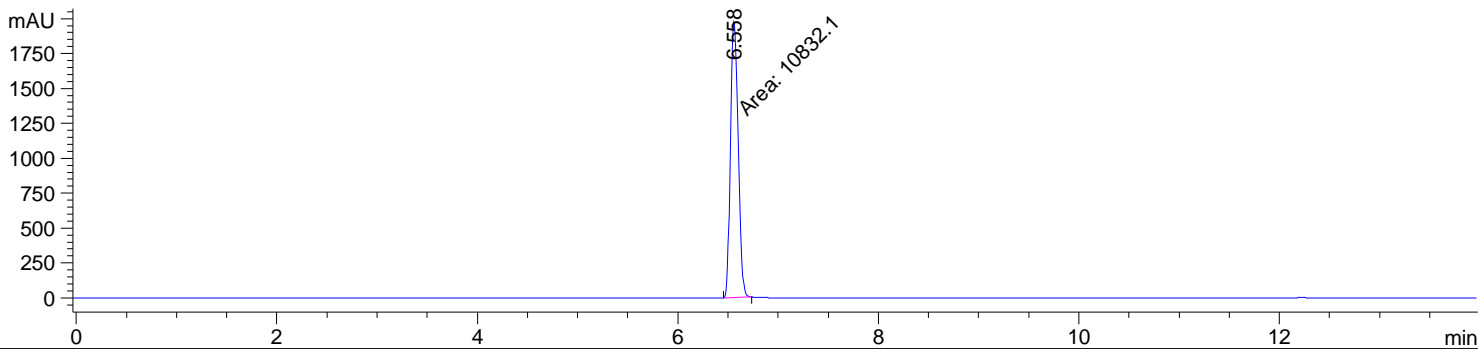
=====  
Acq. Operator : Team1  
Acq. Instrument : INSTRUMENT 1 Location : Vial 60  
Injection Date : 12/30/2019 19:04:55 PM Inj Volume : 1.0 µl  
Acq. Method : C:\CHEM32\1\METHODS\HPLC-1.M  
Last changed : 12/29/2019 10:08:23 AM by Team1  
Analysis Method : C:\CHEM32\1\METHODS\WASH-COLUMN.M  
Last changed : 12/30/2019 10:54:14 AM by Team1  
Sample Info : Easy-Access Method: 'HPLC-1'

Additional Info : Peak(s) manually integrated

DAD1 A, Sig=214,4 Ref=360,100 (D:\DATA\TEAM1\12-19\HPLC-ZDW-191230-99021-01195.D)



DAD1 B, Sig=254,16 Ref=360,100 (D:\DATA\TEAM1\12-19\HPLC-ZDW-191230-99021-01195.D)



=====  
Area Percent Report  
=====

Sorted By : Signal  
Multiplier: : 1.0000  
Dilution: : 1.0000  
Use Multiplier & Dilution Factor with ISTDs

Signal 1: DAD1 A, Sig=214,4 Ref=360,100

Peak #	RetTime [min]	Type	Width [min]	Area [mAU*s]	Height [mAU]	Area %
1	6.558	MM	0.0999	1.26156e4	2103.79590	99.7900
2	7.530	MM	0.0357	19.98568	9.33217	0.1581
3	7.666	MM	0.0441	6.55953	2.47886	0.0519

Totals : 1.26421e4 2115.60692

Signal 2: DAD1 B, Sig=254,16 Ref=360,100

Peak #	RetTime [min]	Type	Width [min]	Area [mAU*s]	Height [mAU]	Area %
1	6.558	MM	0.0913	1.08321e4	1977.96875	100.0000

Totals : 1.08321e4 1977.96875

=====  
\*\*\* End of Report \*\*\*