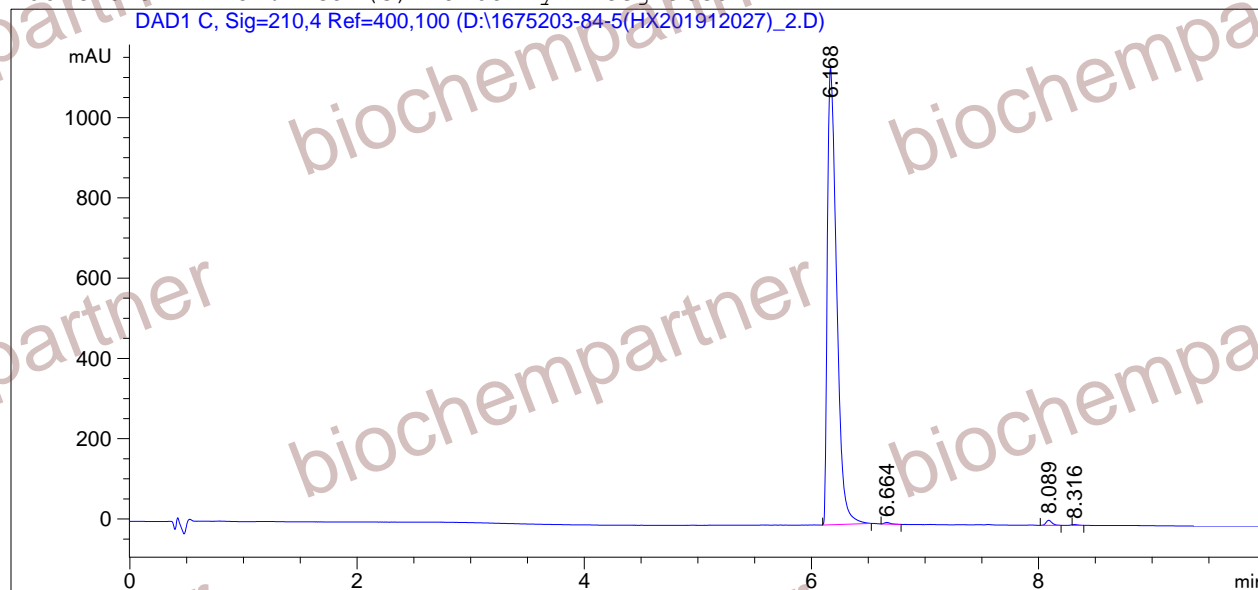


=====
Acq. Operator : Seq. Line : 2
Acq. Instrument : Instrument 1 Location : Vial 4
Injection Date : 12/2/2019 4:48:57 PM Inj : 1
Inj Volume : 3.0 µl
Different Inj Volume from Sequence ! Actual Inj Volume : 1.5 µl
Acq. Method : D:\
Last changed : 11/18/2019 11:35:12 AM
Analysis Method : D:\CHEM32\1\1.M
Last changed : 12/2/2019 5:06:10 PM
(modified after loading)
Sample Info : [A = ACN, B = acid-1/H2O] 10-95% A/B 6 min, 95% A/B 4 min; Athena C18 (2.4 µm,
2.1 mm * 100 mm); Flow: 0.40 ml/min, T = 25

Additional Info : Peak(s) manually integrated



=====
Area Percent Report
=====

Sorted By : Signal
Multiplier : 1.0000
Dilution : 1.0000
Use Multiplier & Dilution Factor with ISTDs

Signal 1: DAD1 C, Sig=210,4 Ref=400,100

Peak #	RetTime [min]	Type	Width [min]	Area [mAU*s]	Height [mAU]	Area %
1	6.168	BB	0.0897	6454.60156	1137.78015	98.9744
2	6.664	BB	0.0535	14.51898	3.98715	0.2226
3	8.089	VB	0.0559	45.84015	12.61557	0.7029
4	8.316	VB B	0.0394	6.52618	2.11937	0.1001

Totals : 6521.48687 1156.50223

=====
*** End of Report ***