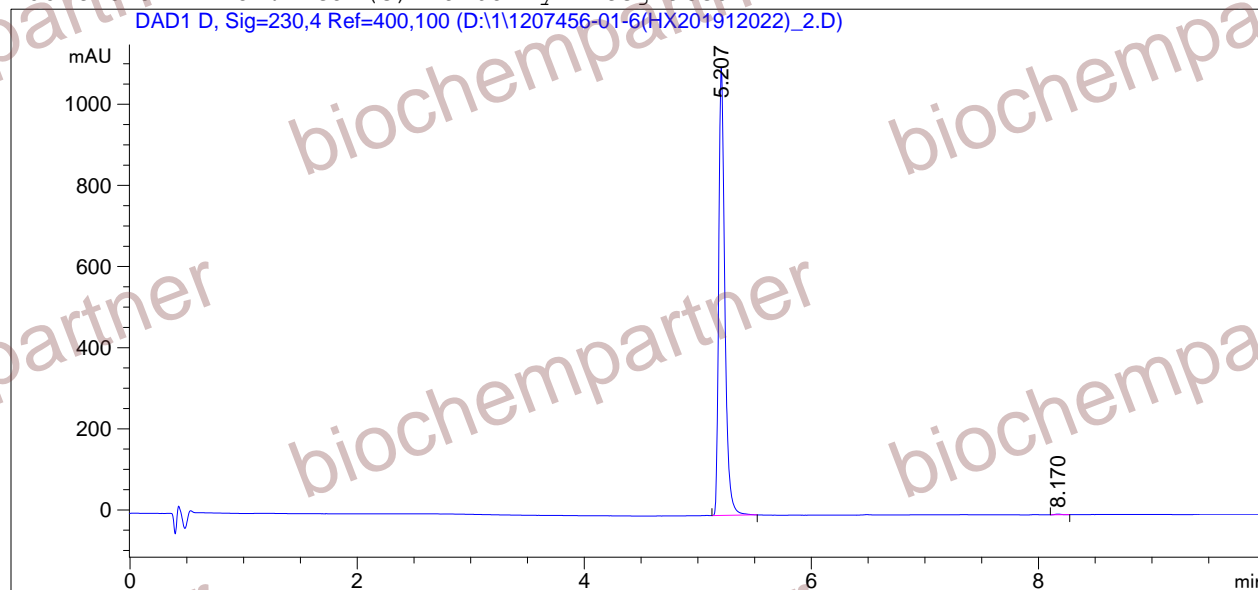


=====  
Acq. Operator : Seq. Line : 7  
Acq. Instrument : Instrument 1 Location : Vial 2  
Injection Date : 12/2/2019 4:14:52 PM Inj : 1  
Inj Volume : 3.0 µl  
Different Inj Volume from Sequence ! Actual Inj Volume : 1.5 µl  
Acq. Method : D:  
Last changed : 11/18/2019 11:35:12 AM  
Analysis Method : D:\CHEM32\1\1.M  
Last changed : 12/2/2019 4:37:37 PM  
(modified after loading)  
Sample Info : [A = ACN, B = acid-1/H2O] 10-95% A/B 6 min, 95% A/B 4 min; Athena C18 (2.4 µm,  
2.1 mm \* 100 mm); Flow: 0.40 ml/min, T = 25

Additional Info : Peak(s) manually integrated



=====  
Area Percent Report  
=====

Sorted By : Signal  
Multiplier : 1.0000  
Dilution : 1.0000  
Use Multiplier & Dilution Factor with ISTDs

Signal 1: DAD1 D, Sig=230,4 Ref=400,100

Peak #	RetTime [min]	Type	Width [min]	Area [mAU*s]	Height [mAU]	Area %
1	5.207	VB	0.0572	4130.99756	1102.94214	99.8593
2	8.170	BB	0.0519	5.82041	1.56466	0.1407

Totals : 4136.81797 1104.50680

=====  
\*\*\* End of Report \*\*\*