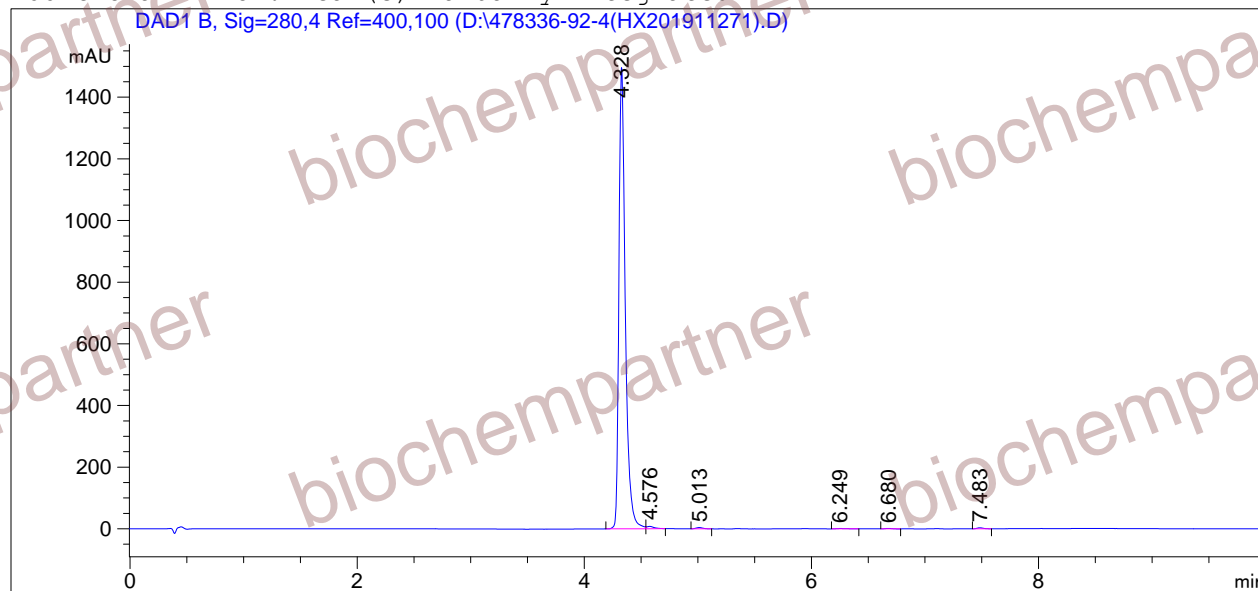


=====
Acq. Operator : Seq. Line : 1
Acq. Instrument : Instrument 1 Location : Vial 24
Injection Date : 11/28/2019 12:13:19 PM Inj : 1
Inj Volume : 3.0 µl
Different Inj Volume from Sequence ! Actual Inj Volume : 1.5 µl
Acq. Method : D:
Last changed : 11/18/2019 11:35:12 AM
Analysis Method : D:\CHEM32\1\1.M
Last changed : 10/28/2019 12:37:35 PM
Sample Info : [A = ACN, B = acid-1/H2O] 10-95% A/B 6 min, 95% A/B 4 min; Athena C18 (2.4 µm,
2.1 mm * 100 mm); Flow: 0.40 ml/min, T = 25

Additional Info : Peak(s) manually integrated



=====
Area Percent Report
=====

Sorted By : Signal
Multiplier : 1.0000
Dilution : 1.0000
Use Multiplier & Dilution Factor with ISTDs

Signal 1: DAD1 B, Sig=280,4 Ref=400,100

| Peak # | RetTime [min] | Type | Width [min] | Area [mAU*s] | Height [mAU] | Area % |
|--------|---------------|------|-------------|--------------|--------------|---------|
| 1 | 4.328 | BV | 0.0587 | 5857.46777 | 1496.01685 | 98.7412 |
| 2 | 4.576 | VB | 0.0629 | 34.14496 | 7.52377 | 0.5756 |
| 3 | 5.013 | BB | 0.0600 | 16.98945 | 4.13235 | 0.2864 |
| 4 | 6.249 | BB | 0.0758 | 6.62217 | 1.08382 | 0.1116 |
| 5 | 6.680 | BB | 0.0483 | 5.11752 | 1.34863 | 0.0863 |
| 6 | 7.483 | BB | 0.0540 | 11.80189 | 3.23936 | 0.1989 |

Totals: 5932.14377 1513.34479

=====
*** End of Report ***