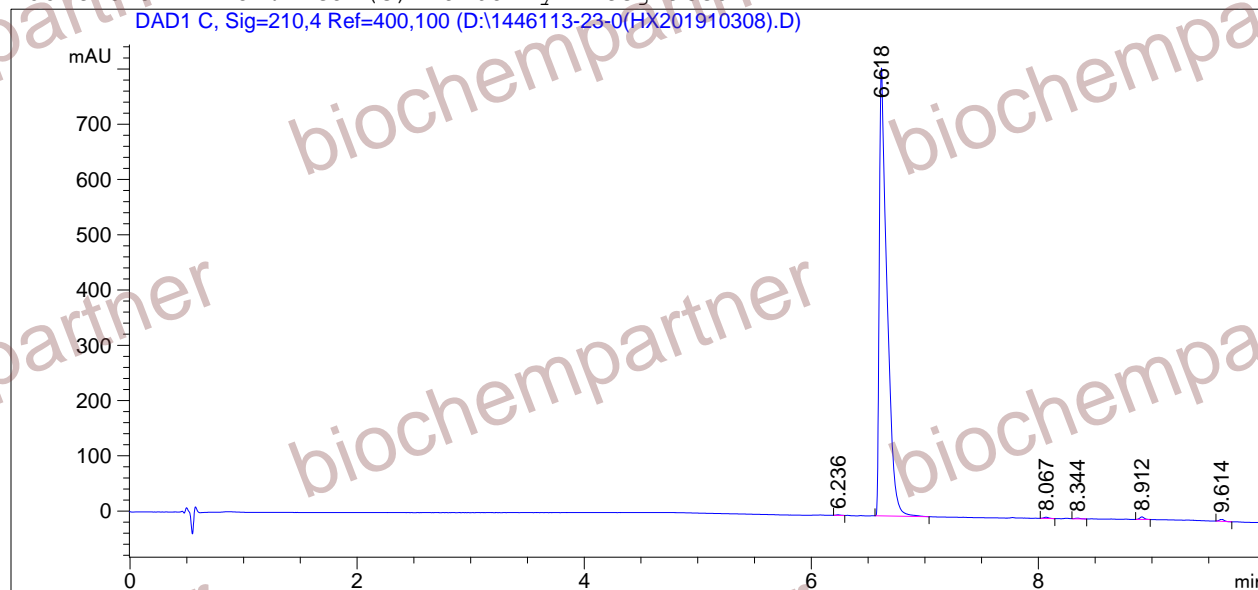


=====
Acq. Operator : Seq. Line : 7
Acq. Instrument : Instrument 1 Location : Vial 14
Injection Date : 10/30/2019 4:37:24 PM Inj : 1
Inj Volume : 3.0 µl
Different Inj Volume from Sequence ! Actual Inj Volume : 2.0 µl
Acq. Method : D:
Last changed : 6/6/2018 1:07:35 PM
Analysis Method : D:\CHEM32\1\1.M
Last changed : 10/30/2019 5:30:40 PM
(modified after loading)
Sample Info : [A = ACN, B = acid-1/H2O] 0% A/B 2 min, 0-95% A/B 5 min, 95% A/B 3 min; Athena
C18 (3 µm, 2.1 mm * 100 mm); Flow: 0.45 ml/min, T = 25

Additional Info : Peak(s) manually integrated



=====
Area Percent Report
=====

Sorted By : Signal
Multiplier : 1.0000
Dilution : 1.0000
Use Multiplier & Dilution Factor with ISTDs

Signal 1: DAD1 C, Sig=210,4 Ref=400,100

Peak #	RetTime [min]	Type	Width [min]	Area [mAU*s]	Height [mAU]	Area %
1	6.236	BV	0.0427	3.60914	1.19601	0.0937
2	6.618	BB	0.0664	3816.20215	810.51257	99.0311
3	8.067	BB	0.0434	6.47836	2.22953	0.1681
4	8.344	VB	0.0488	4.43609	1.30149	0.1151
5	8.912	BB	0.0421	12.71704	4.62915	0.3300
6	9.614	BB	0.0409	10.09485	3.63996	0.2620

Totals : 3853.53762 823.50871

=====
*** End of Report ***