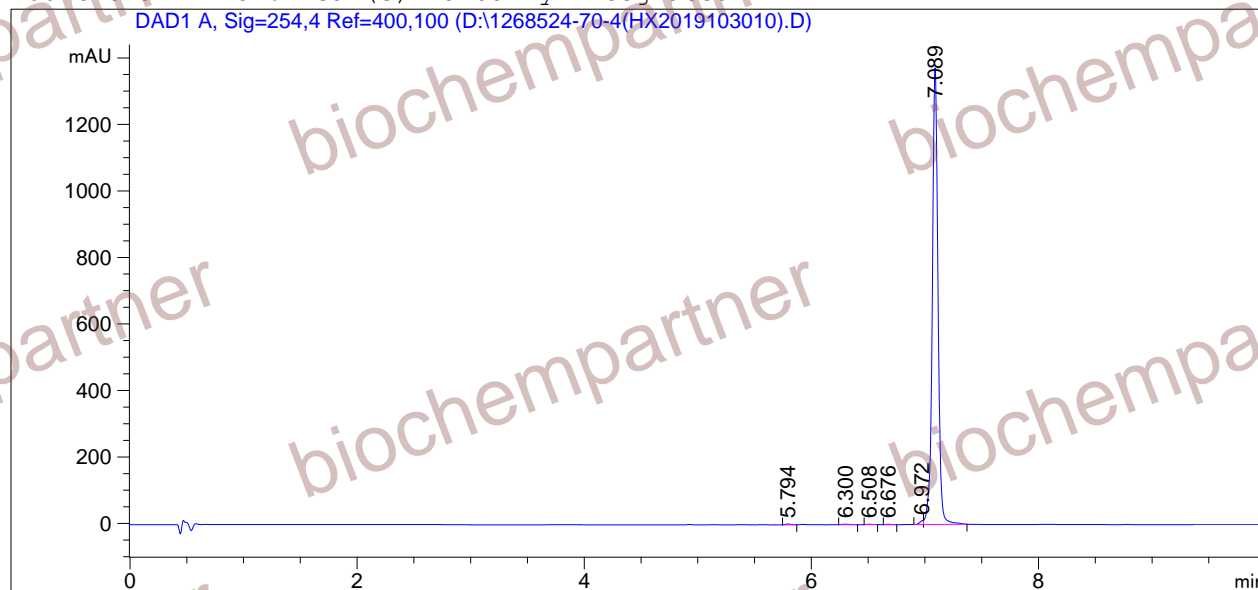


=====
Acq. Operator : Seq. Line : 3
Acq. Instrument : Instrument 1 Location : Vial 16
Injection Date : 10/30/2019 3:51:06 PM Inj : 1
Inj Volume : 3.0 µl
Different Inj Volume from Sequence ! Actual Inj Volume : 2.0 µl
Acq. Method : D:
Last changed : 6/6/2018 1:09:06 PM
Analysis Method : D:\CHEM32\1\1.M
Last changed : 10/30/2019 5:29:24 PM
(modified after loading)
Sample Info : [A = ACN, B = acid-1/H2O] 10-95% A/B 6 min, 95% A/B 4 min; Athena C18 (3 µm, 2
.1 mm * 100 mm); Flow: 0.45 ml/min, T = 25

Additional Info : Peak(s) manually integrated
DAD1 A, Sig=254,4 Ref=400,100 (D:\1268524-70-4 (HX2019103010).D)



=====
Area Percent Report
=====

Sorted By : Signal
Multiplier : 1.0000
Dilution : 1.0000
Use Multiplier & Dilution Factor with ISTDs

Signal 1: DAD1 A, Sig=254,4 Ref=400,100

Peak #	RetTime [min]	Type	Width [min]	Area [mAU*s]	Height [mAU]	Area %
1	5.794	BB	0.0405	5.99615	2.18642	0.1238
2	6.300	BB	0.0574	6.06860	1.41942	0.1253
3	6.508	BB	0.0361	2.77162	1.09365	0.0572
4	6.676	BB	0.0469	3.30087	1.07245	0.0682
5	6.972	BV F	0.0339	25.53344	11.09388	0.5273
6	7.089	VB	0.0533	4798.84131	1372.37341	99.0982

Totals : 4842.51199 1389.23923

=====
*** End of Report ***