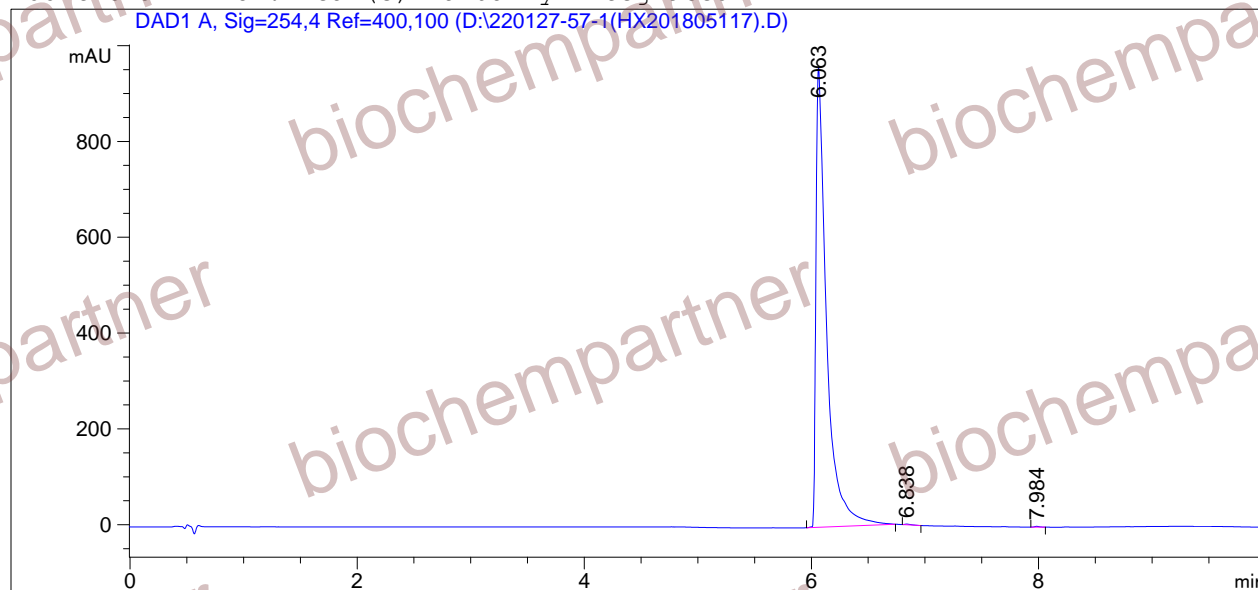


=====  
Acq. Operator : Seq. Line : 4  
Acq. Instrument : Instrument 1 Location : Vial 5  
Injection Date : 10/24/2019 10:37:37 AM Inj : 1  
Inj Volume : 3.0 µl  
Different Inj Volume from Sequence ! Actual Inj Volume : 2.0 µl  
Acq. Method : D:  
Last changed : 6/6/2018 1:07:35 PM  
Analysis Method : D:\CHEM32\1\1.M  
Last changed : 10/24/2019 11:13:56 AM  
(modified after loading)  
Sample Info : [A = ACN, B = acid-1/H2O] 0% A/B 2 min, 0-95% A/B 5 min, 95% A/B 3 min; Athena  
C18 (3 µm, 2.1 mm \* 100 mm); Flow: 0.45 ml/min, T = 25

Additional Info : Peak(s) manually integrated



=====  
Area Percent Report  
=====

Sorted By : Signal  
Multiplier : 1.0000  
Dilution : 1.0000  
Use Multiplier & Dilution Factor with ISTDs

Signal 1: DAD1 A, Sig=254,4 Ref=400,100

Peak #	RetTime [min]	Type	Width [min]	Area [mAU*s]	Height [mAU]	Area %
1	6.063	BB	0.0890	6250.40723	958.92566	99.8359
2	6.838	BB	0.0503	5.38823	1.47028	0.0861
3	7.984	BB	0.0413	4.88858	1.68624	0.0781

Totals : 6260.68403 962.08218

=====  
\*\*\* End of Report \*\*\*