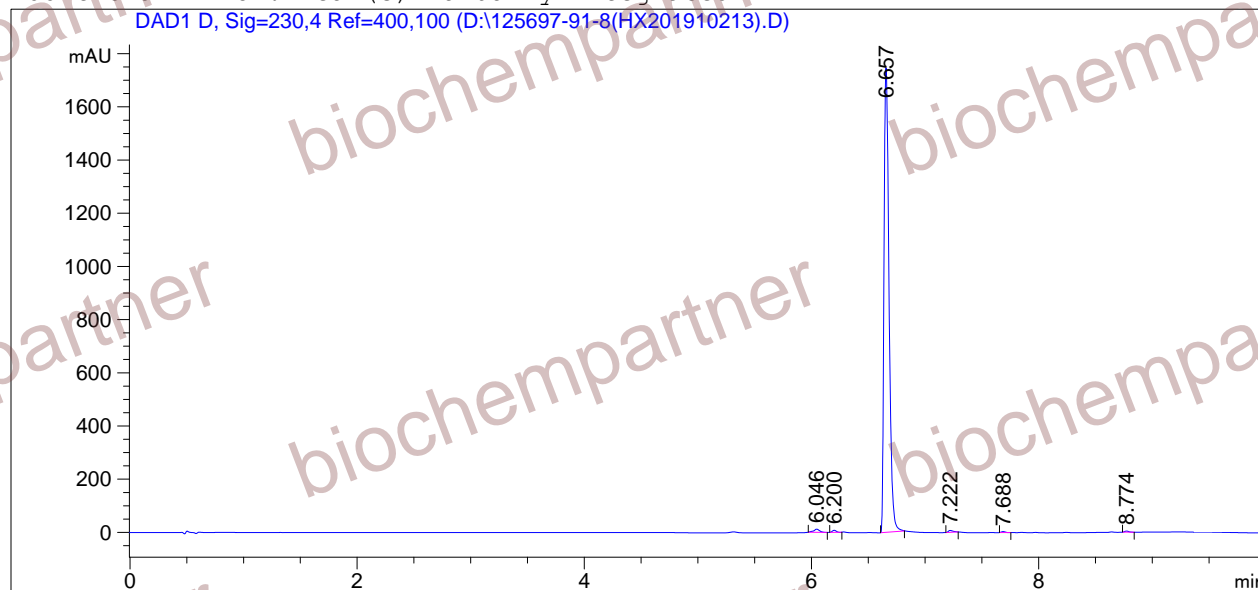


=====  
Acq. Operator : Seq. Line : 3  
Acq. Instrument : Instrument 1 Location : Vial 6  
Injection Date : 10/24/2019 3:21:09 PM Inj : 1  
Inj Volume : 3.0 µl  
Different Inj Volume from Sequence ! Actual Inj Volume : 2.0 µl  
Acq. Method : D  
Last changed : 6/6/2018 1:07:35 PM  
Analysis Method : D:\CHEM32\1\1.M  
Last changed : 10/24/2019 4:12:14 PM  
(modified after loading)  
Sample Info : [A = ACN, B = acid-1/H2O] 0% A/B 2 min, 0-95% A/B 5 min, 95% A/B 3 min; Athena  
C18 (3 µm, 2.1 mm \* 100 mm); Flow: 0.45 ml/min, T = 25

Additional Info : Peak(s) manually integrated



=====  
Area Percent Report  
=====

Sorted By : Signal  
Multiplier : 1.0000  
Dilution : 1.0000  
Use Multiplier & Dilution Factor with ISTDs

Signal 1: DAD1 D, Sig=230,4 Ref=400,100

Peak #	RetTime [min]	Type	Width [min]	Area [mAU*s]	Height [mAU]	Area %
1	6.046	BB	0.0529	43.40153	11.93265	0.7958
2	6.200	BB	0.0360	17.32268	7.76681	0.3176
3	6.657	BB	0.0483	5353.81445	1746.84070	98.1687
4	7.222	BB	0.0437	21.53881	7.35214	0.3949
5	7.688	BB	0.0349	7.50192	3.52013	0.1376
6	8.774	BB	0.0383	10.10885	4.16248	0.1854

Totals : 5453.68824 1781.57490

=====  
\*\*\* End of Report \*\*\*