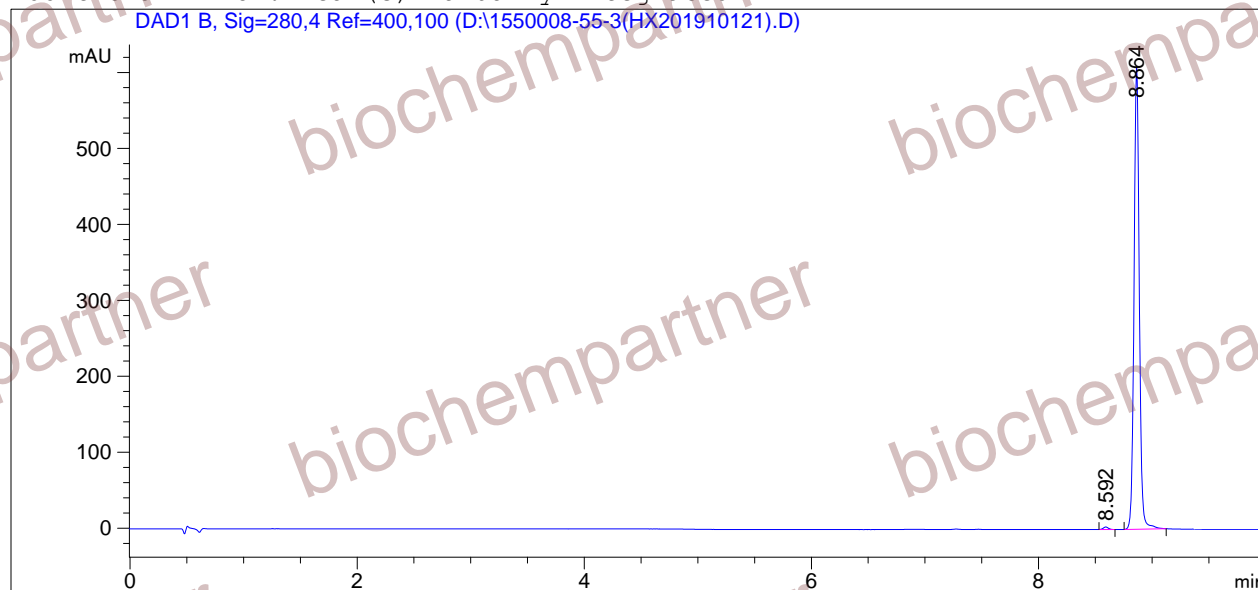


=====
Acq. Operator : Seq. Line : 5
Acq. Instrument : Instrument 1 Location : Vial 6
Injection Date : 10/14/2019 12:22:46 PM Inj : 1
Inj Volume : 3.0 µl
Different Inj Volume from Sequence ! Actual Inj Volume : 2.0 µl
Acq. Method : D:
Last changed : 6/6/2018 1:07:35 PM
Analysis Method : D:\CHEM32\1\1.M
Last changed : 10/14/2019 12:56:50 PM
(modified after loading)
Sample Info : [A = ACN, B = acid-1/H2O] 0% A/B 2 min, 0-95% A/B 5 min, 95% A/B 3 min; Athena
C18 (3 µm, 2.1 mm * 100 mm); Flow: 0.45 ml/min, T = 25

Additional Info : Peak(s) manually integrated



=====
Area Percent Report
=====

Sorted By : Signal
Multiplier : 1.0000
Dilution : 1.0000
Use Multiplier & Dilution Factor with ISTDs

Signal 1: DAD1 B, Sig=280,4 Ref=400,100

| Peak # | RetTime [min] | Type | Width [min] | Area [mAU*s] | Height [mAU] | Area % |
|--------|---------------|------|-------------|--------------|--------------|---------|
| 1 | 8.592 | BB | 0.0457 | 9.84677 | 3.26487 | 0.4987 |
| 2 | 8.864 | BB | 0.0493 | 1964.71814 | 607.18304 | 99.5013 |

Totals : 1974.56491 610.44792

=====
*** End of Report ***