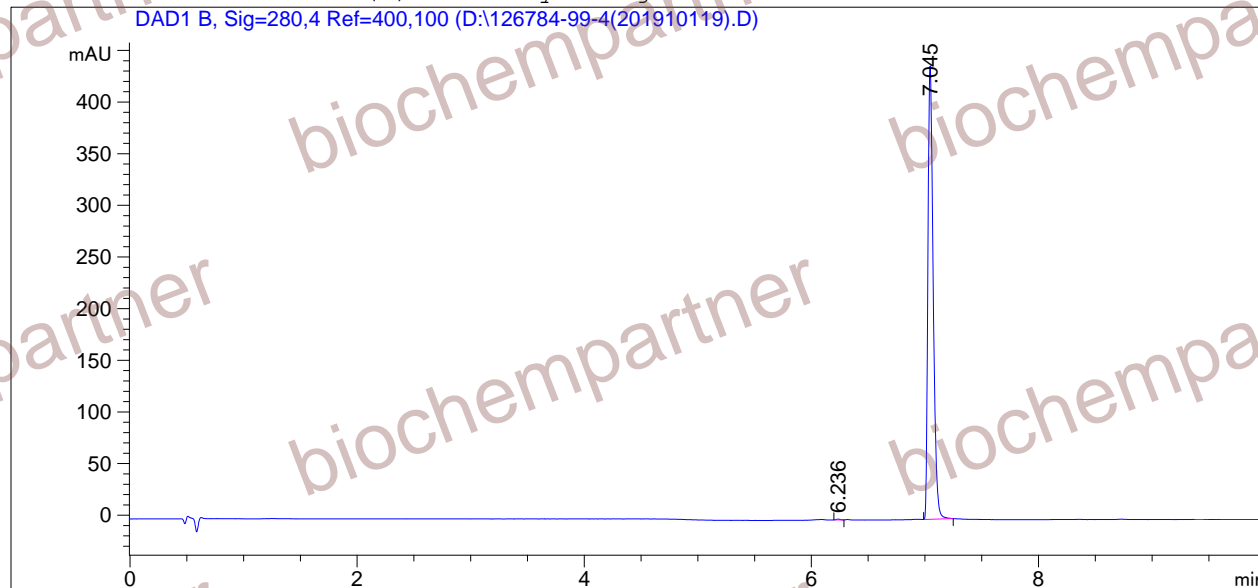


=====
Acq. Operator : Seq. Line : 4
Acq. Instrument : Instrument 1 Location : Vial 10
Injection Date : 10/14/2019 12:08:25 PM Inj : 1
Inj Volume : 3.0 µl
Different Inj Volume from Sequence ! Actual Inj Volume : 2.0 µl
Acq. Method : D:
Last changed : 6/6/2018 1:07:35 PM
Analysis Method : D:\CHEM32\1\1.M
Last changed : 10/14/2019 12:27:46 PM
(modified after loading)
Sample Info : [A = ACN, B = acid-1/H2O] 0% A/B 2 min, 0-95% A/B 5 min, 95% A/B 3 min; Athena
C18 (3 µm, 2.1 mm * 100 mm); Flow: 0.45 ml/min, T = 25

Additional Info : Peak(s) manually integrated



=====
Area Percent Report
=====

Sorted By : Signal
Multiplier : 1.0000
Dilution : 1.0000
Use Multiplier & Dilution Factor with ISTDs

Signal 1: DAD1 B, Sig=280,4 Ref=400,100

Peak #	RetTime [min]	Type	Width [min]	Area [mAU*s]	Height [mAU]	Area %
1	6.236	BV	0.0340	1.86178	7.63442e-1	0.1314
2	7.045	BB	0.0501	1414.70691	438.79047	99.8686

Totals : 1416.56869 439.55391

=====
*** End of Report ***