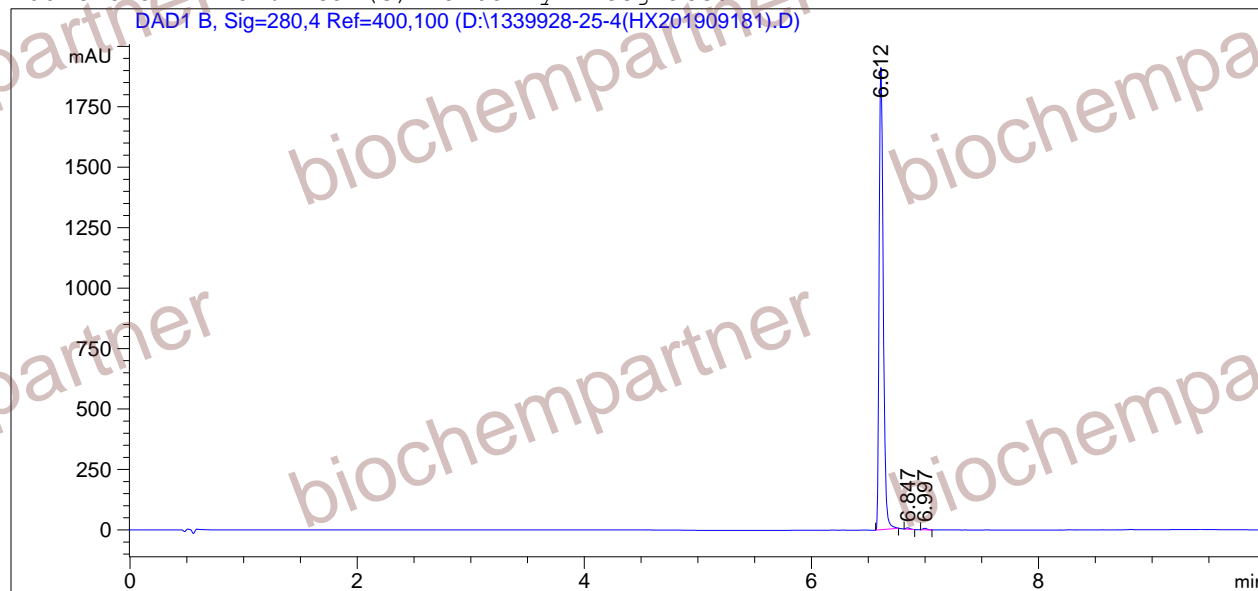


=====  
Acq. Operator : Seq. Line : 1  
Acq. Instrument : Instrument 1 Location : Vial 41  
Injection Date : 9/19/2019 1:24:31 PM Inj : 1  
Inj Volume : 3.0 µl  
Acq. Method : D:  
Last changed : 6/6/2018 1:07:35 PM  
Analysis Method : D:\CHEM32\1\1.M  
Last changed : 9/19/2019 2:56:46 PM  
(modified after loading)  
Sample Info : A = ACN, B = acid-1/H2O] 0% A/B 2 min, 0-95% A/B 5 min, 95% A/B 3 min; Athena  
C18 (3 µm, 2.1 mm \* 100 mm); Flow: 0.45 ml/min, T = 25

Additional Info : Peak(s) manually integrated  
DAD1 B, Sig=280,4 Ref=400,100 (D:\1339928-25-4 (HX201909181) .D)



=====  
Area Percent Report  
=====

Sorted By : Signal  
Multiplier : 1.0000  
Dilution : 1.0000  
Use Multiplier & Dilution Factor with ISTDs

Signal 1: DAD1 B, Sig=280,4 Ref=400,100

Peak #	RetTime [min]	Type	Width [min]	Area [mAU*s]	Height [mAU]	Area %
1	6.612	BB	0.0396	4847.04395	1910.87512	99.4499
2	6.847	BB	0.0351	11.71993	5.24020	0.2405
3	6.997	BB	0.0382	15.09267	6.14451	0.3097

Totals : 4873.85654 1922.25983

=====  
\*\*\* End of Report \*\*\*