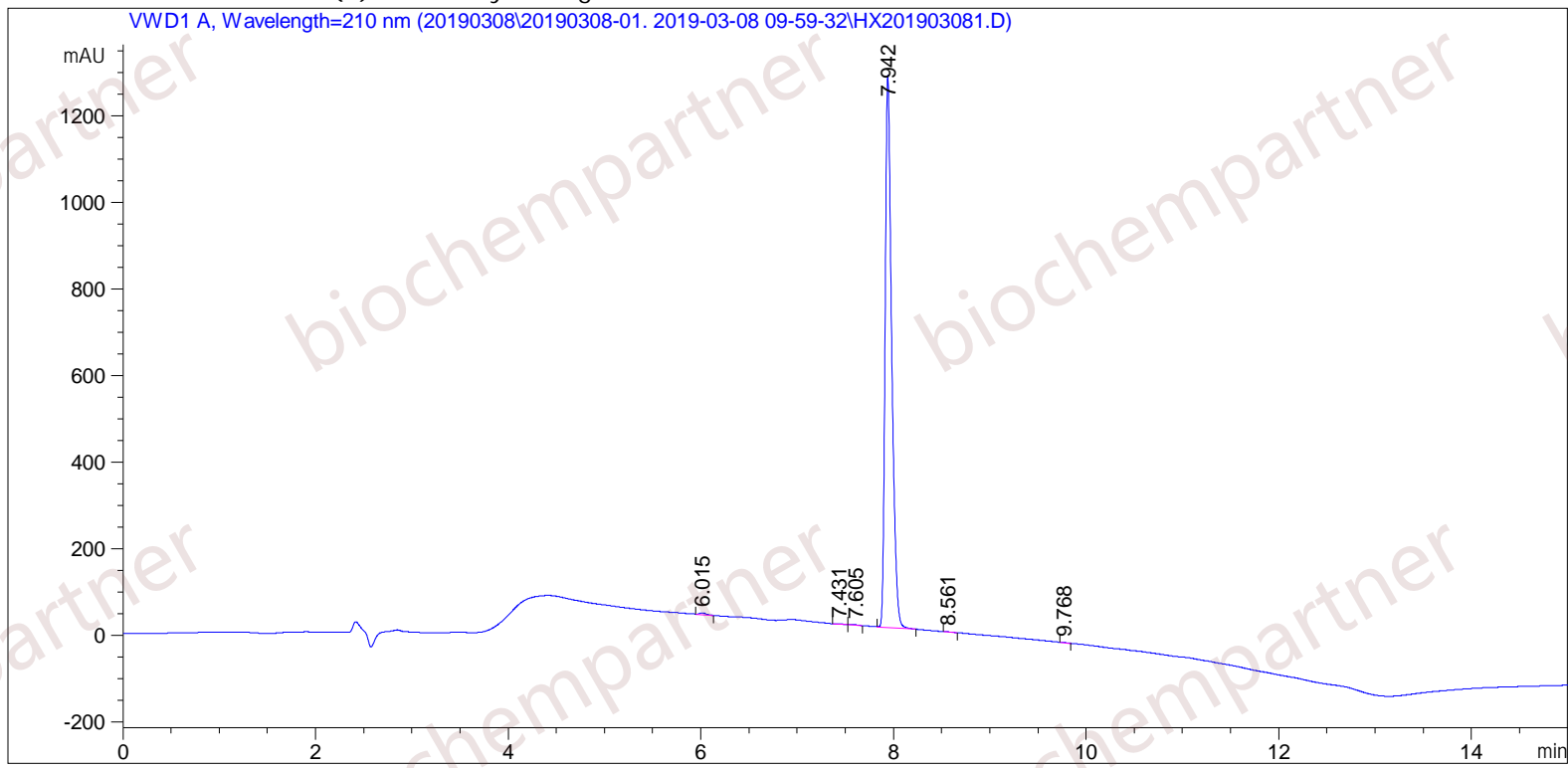


Sample Name: M-3-8-13

=====

Acq. Operator	: SYSTEM	Seq. Line	: 14
Acq. Instrument	: Agilent HPLC	Location	: 38
Injection Date	: 3/8/2019 3:23:31 PM	Inj	: 1
		Inj Volume	: 5.000 µl
Different Inj Volume from Sample Entry!		Actual Inj Volume	: 0.500 µl
Acq. Method	: C:\Chem32\1\Data\20190308\20190308-01. 2019-03-08 09-59-32\5-(10)-100(5)-1-40-210.M		
Last changed	: 3/8/2019 10:10:42 AM by SYSTEM		
Analysis Method	: C:\Chem32\1\Data\20190308\20190308-01. 2019-03-08 09-59-32\5-(10)-100(5)-1-40-210.M (Sequence Method)		
Last changed	: 3/8/2019 4:07:53 PM by SYSTEM (modified after loading)		

Additional Info : Peak(s) manually integrated



=====
Area Percent Report
=====

Sorted By : Signal
Multiplier : 1.0000
Dilution : 1.0000
Use Multiplier & Dilution Factor with ISTDs

Signal 1: VWD1 A, Wavelength=210 nm

Peak #	RetTime [min]	Type	Width [min]	Area [mAU*s]	Height [mAU]	Area %
1	6.015	MM	0.0800	22.24265	4.63452	0.3626
2	7.431	MF	0.0952	6.28969	1.10132	0.1025
3	7.605	FM	0.0878	5.61125	1.06461	0.0915
4	7.942	MM	0.0796	6093.52832	1276.51489	99.3460
5	8.561	MM	0.0744	2.75606	6.17606e-1	0.0449
6	9.768	MM	0.0673	3.21302	7.95446e-1	0.0524

Totals : 6133.64099 1284.72840

=====
*** End of Report ***