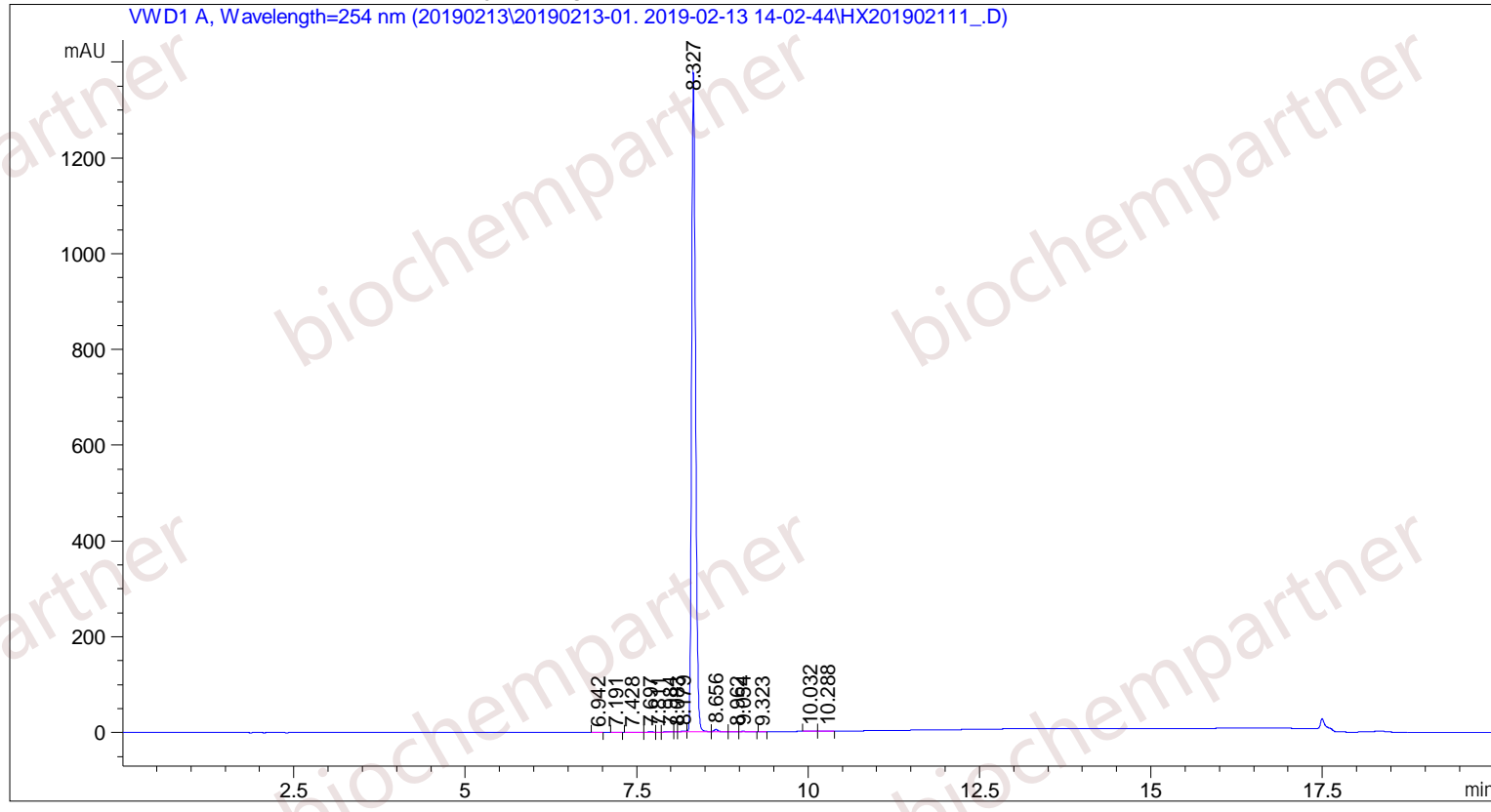


Sample Name: M-2-13-5

```

=====
Acq. Operator   : SYSTEM                               Seq. Line :    4
Acq. Instrument : Agilent HPLC                         Location  :   22
Injection Date  : 2/13/2019 3:12:48 PM                 Inj       :    1
                                                    Inj Volume: 5.000 µl
Different Inj Volume from Sample Entry! Actual Inj Volume : 3.000 µl
Acq. Method     : C:\Chem32\1\Data\20190213\20190213-01. 2019-02-13 14-02-44\5-(10)-100(5)-1-40-254.M
Last changed    : 2/13/2019 2:02:44 PM by SYSTEM
Analysis Method : C:\Chem32\1\Data\20190213\20190213-01. 2019-02-13 14-02-44\5-(10)-100(5)-1-40-254.M (Sequence Method)
Last changed    : 2/13/2019 3:39:42 PM by SYSTEM
                (modified after loading)
Additional Info : Peak(s) manually integrated
    
```



Area Percent Report

```

Sorted By      :      Signal
Multiplier     :      1.0000
Dilution       :      1.0000
Use Multiplier & Dilution Factor with ISTDs
    
```

Signal 1: VWD1 A, Wavelength=254 nm

Peak #	RetTime [min]	Type	Width [min]	Area [mAU*s]	Height [mAU]	Area %
1	6.942	MM	0.0821	4.78703e-1	9.71802e-2	8.617e-3
2	7.191	MM	0.0668	6.56791e-1	1.63887e-1	0.0118
3	7.428	MF	0.1334	1.88554	2.35578e-1	0.0339
4	7.697	FM	0.0700	1.53886	3.66210e-1	0.0277

Sample Name: M-2-13-5

Peak #	RetTime [min]	Type	Width [min]	Area [mAU*s]	Height [mAU]	Area %
5	7.811	FM	0.0582	2.26568e-1	6.48684e-2	4.079e-3
6	7.984	FM	0.0766	1.83053	3.98294e-1	0.0330
7	8.083	FM	0.0468	4.95914e-1	1.76497e-1	8.927e-3
8	8.179	FM	0.0755	10.79369	2.38371	0.1943
9	8.327	FM	0.0665	5503.00098	1378.27893	99.0630
10	8.656	FM	0.0757	23.15843	5.09762	0.4169
11	8.962	FM	0.1228	1.93562	2.62624e-1	0.0348
12	9.054	FM	0.0748	3.69551	8.23002e-1	0.0665
13	9.323	MM	0.0666	7.79271e-1	1.95135e-1	0.0140
14	10.032	MF	0.0723	1.78467	4.11381e-1	0.0321
15	10.288	FM	0.1072	2.79114	4.33979e-1	0.0502

Totals : 5555.05222 1389.38889

=====
*** End of Report ***