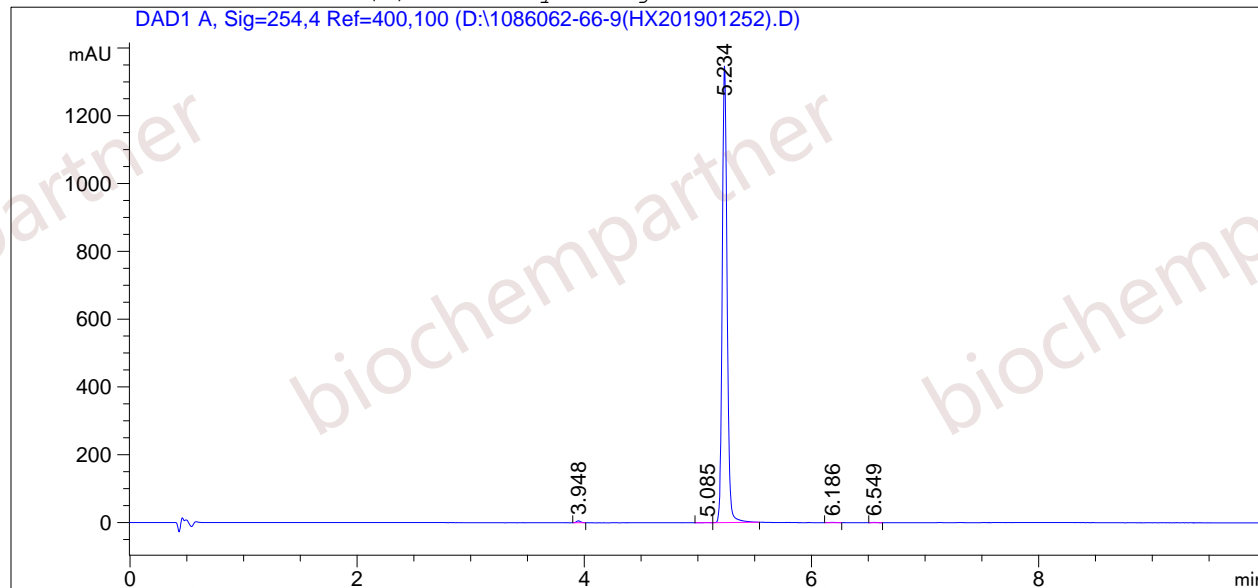


=====
Acq. Operator : Seq. Line : 1
Acq. Instrument : Instrument 1 Location : Vial 49
Injection Date : 1/25/2019 1:44:07 PM Inj : 1
Inj Volume : 3.0 µl
Different Inj Volume from Sequence ! Actual Inj Volume : 2.0 µl
Acq. Method : D:
Last changed : 6/6/2018 1:09:06 PM
Analysis Method : D:\CHEM32\1\1.M
Last changed : 1/25/2019 2:03:40 PM
(modified after loading)
Sample Info : [A = ACN, B = acid-1/H2O] 10-95% A/B 6 min, 95% A/B 4 min; Athena C18 (3 µm, 2
.1 mm * 100 mm); Flow: 0.45 ml/min, T = 25

Additional Info : Peak(s) manually integrated



=====
Area Percent Report
=====

Sorted By : Signal
Multiplier : 1.0000
Dilution : 1.0000
Use Multiplier & Dilution Factor with ISTDs

Signal 1: DAD1 A, Sig=254,4 Ref=400,100

Peak #	RetTime [min]	Type	Width [min]	Area [mAU*s]	Height [mAU]	Area %
1	3.948	VV	0.0404	14.97588	5.65487	0.3687
2	5.085	VV	0.0454	2.14072	5.88913e-1	0.0527
3	5.234	VB	0.0460	4038.39331	1346.73499	99.4248
4	6.186	BV	0.0510	3.49859	8.15672e-1	0.0861
5	6.549	BV	0.0375	2.74942	8.79588e-1	0.0677

Totals : 4061.75793 1354.67403

=====
*** End of Report ***