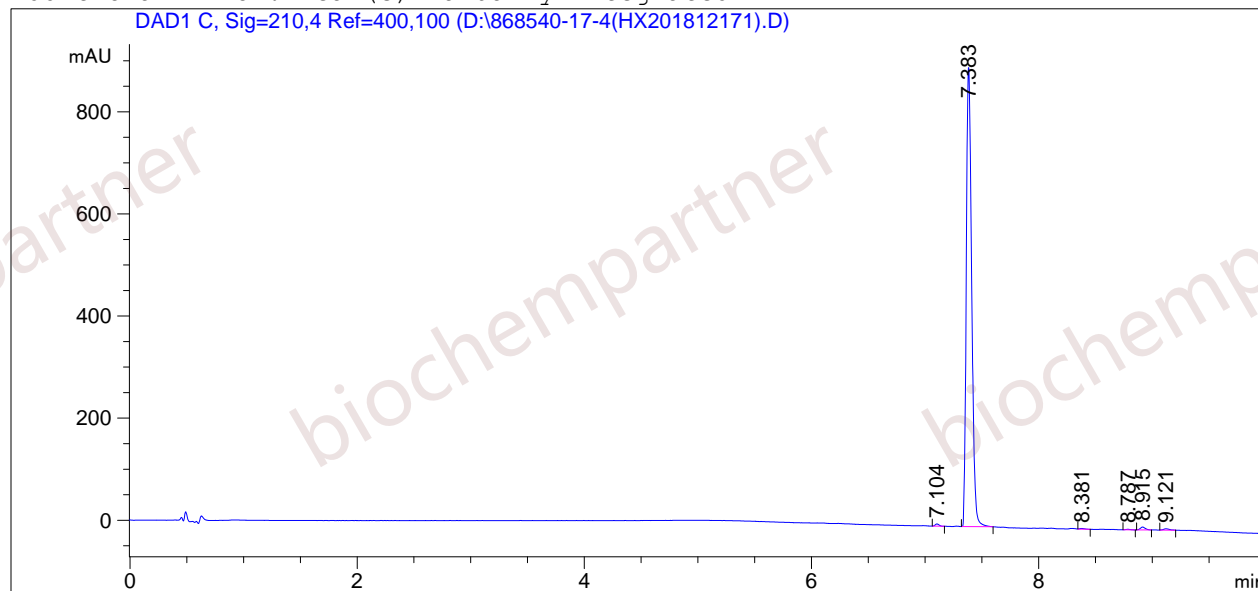


=====
Acq. Operator : Seq. Line : 4
Acq. Instrument : Instrument 1 Location : Vial 17
Injection Date : 12/17/2018 2:19:41 PM Inj : 1
Inj Volume : 3.0 µl
Acq. Method : D:
Last changed : 6/6/2018 1:07:35 PM
Analysis Method : D:\CHEM32\1\1.M
Last changed : 12/17/2018 3:27:42 PM
(modified after loading)
Sample Info : [A = ACN, B = acid-1/H2O] 0% A/B 2 min, 0-95% A/B 5 min, 95% A/B 3 min; Athena
C18 (3 µm, 2.1 mm * 100 mm); Flow: 0.45 ml/min, T = 25

Additional Info : Peak(s) manually integrated



=====
Area Percent Report
=====

Sorted By : Signal
Multiplier : 1.0000
Dilution : 1.0000
Use Multiplier & Dilution Factor with ISTDs

Signal 1: DAD1 C, Sig=210,4 Ref=400,100

Peak #	RetTime [min]	Type	Width [min]	Area [mAU*s]	Height [mAU]	Area %
1	7.104	BB	0.0353	9.59253	4.33355	0.3205
2	7.383	VB	0.0518	2951.70142	899.43060	98.6058
3	8.381	VB	0.0437	4.09820	1.26884	0.1369
4	8.787	BB	0.0350	2.72531	1.00863	0.0910
5	8.915	BB	0.0442	16.24307	5.46058	0.5426
6	9.121	BB	0.0450	9.07415	2.58220	0.3031

Totals : 2993.43467 914.08440

=====
*** End of Report ***