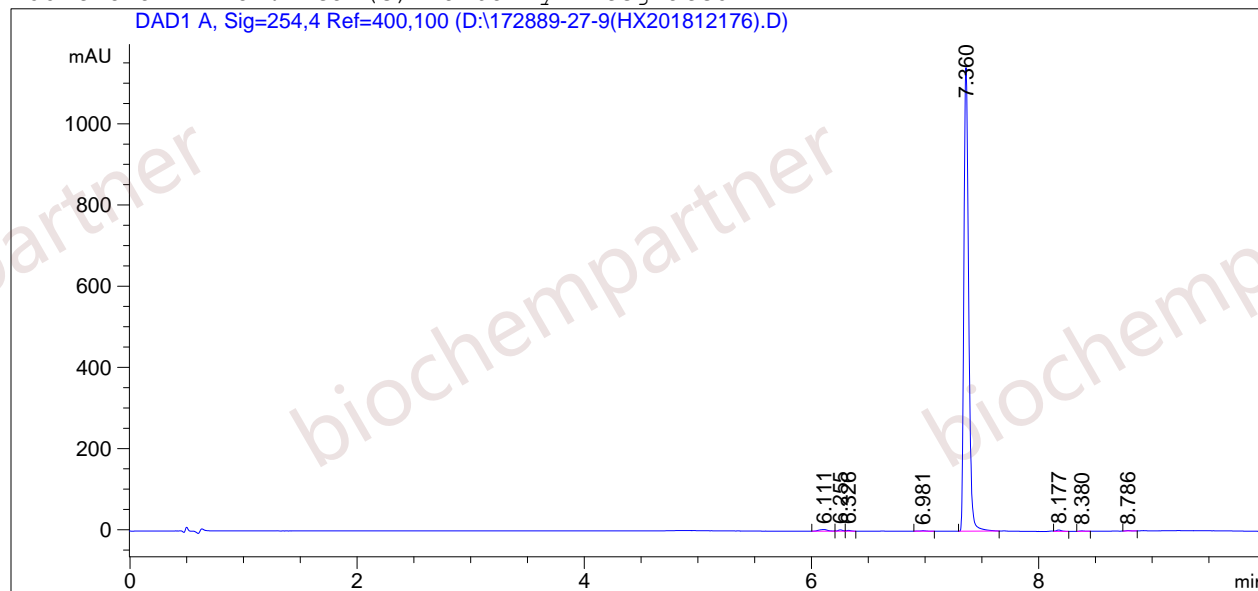


=====  
Acq. Operator : Seq. Line : 7  
Acq. Instrument : Instrument 1 Location : Vial 20  
Injection Date : 12/17/2018 3:02:52 PM Inj : 1  
Inj Volume : 3.0 µl  
Acq. Method : D:  
Last changed : 6/6/2018 1:07:35 PM  
Analysis Method : D:\CHEM32\1\1.M  
Last changed : 12/17/2018 3:23:33 PM  
(modified after loading)  
Sample Info : [A = ACN, B = acid-1/H2O] 0% A/B 2 min, 0-95% A/B 5 min, 95% A/B 3 min; Athena  
C18 (3 µm, 2.1 mm \* 100 mm); Flow: 0.45 ml/min, T = 25

Additional Info : Peak(s) manually integrated



=====  
Area Percent Report  
=====

Sorted By : Signal  
Multiplier : 1.0000  
Dilution : 1.0000  
Use Multiplier & Dilution Factor with ISTDs

Signal 1: DAD1 A, Sig=254,4 Ref=400,100

Peak #	RetTime [min]	Type	Width [min]	Area [mAU*s]	Height [mAU]	Area %
1	6.111	BV	0.0695	21.86499	4.01910	0.6478
2	6.255	VV	0.0419	8.81411	3.12627	0.2611
3	6.326	VV	0.0344	4.80873	1.81738	0.1425
4	6.981	BB	0.0491	4.92750	1.24780	0.1460
5	7.360	BB	0.0449	3318.15527	1142.21948	98.3024
6	8.177	VB	0.0450	10.90465	3.39441	0.3231
7	8.380	BB	0.0323	2.52393	1.02193	0.0748
8	8.786	BV	0.0386	3.45729	1.08820	0.1024

Totals : 3375.45646 1157.93458

=====  
\*\*\*End of Report \*\*\*