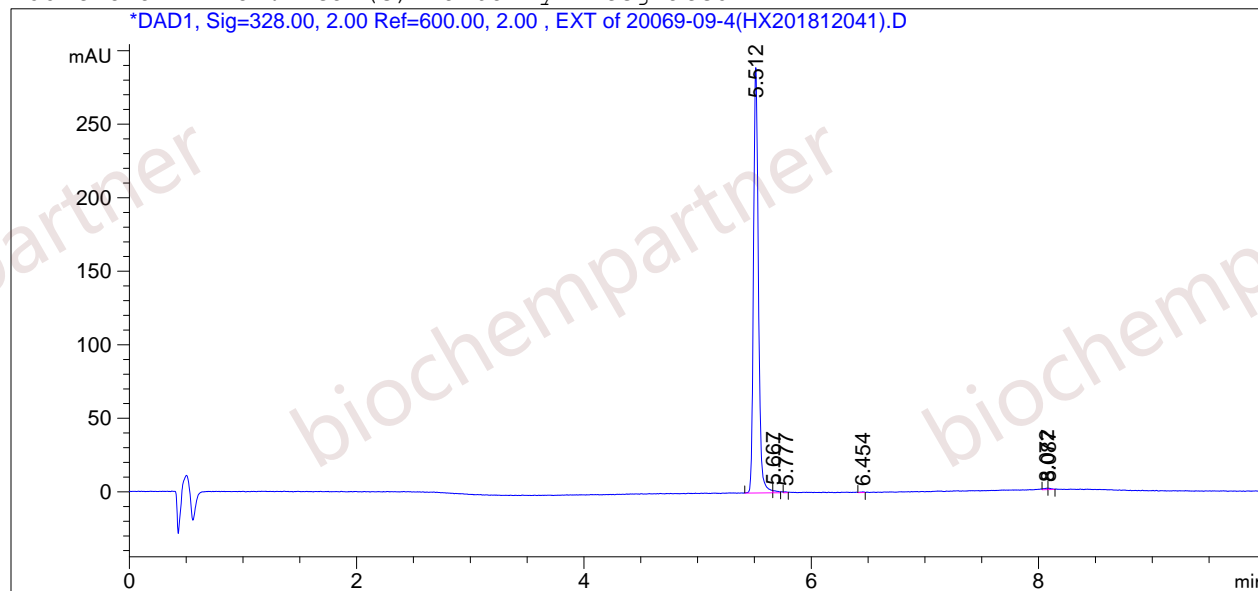


=====  
Acq. Operator : Seq. Line : 1  
Acq. Instrument : Instrument 1 Location : Vial 24  
Injection Date : 12/4/2018 12:24:48 PM Inj : 1  
Inj Volume : 3.0 µl  
Acq. Method : D:  
Last changed : 6/6/2018 1:09:06 PM  
Analysis Method : D:\CHEM32\1\1.M  
Last changed : 12/4/2018 12:59:33 PM  
(modified after loading)  
Sample Info : [A = ACN, B = 0.1% H3PO4/H2O] 10-95% A/B 6 min, 95% A/B 4 min; Athena C18 (3  
um, 2.1 mm \* 100 mm); Flow: 0.45 ml/min, T = 25

Additional Info : Peak(s) manually integrated



=====  
Area Percent Report  
=====

Sorted By : Signal  
Multiplier : 1.0000  
Dilution : 1.0000  
Use Multiplier & Dilution Factor with ISTDs

Signal 1: DAD1, Sig=328.00, 2.00 Ref=600.00, 2.00 , EXT  
Signal has been modified after loading from rawdata file!

Peak #	RetTime [min]	Type	Width [min]	Area [mAU*s]	Height [mAU]	Area %
1	5.512	VV	0.0464	865.36127	289.28201	98.7570
2	5.667	VV	0.0368	4.44086	1.51114	0.5068
3	5.777	VV	0.0265	1.25228	5.95962e-1	0.1429
4	6.454	VV	0.0273	1.02969	4.83913e-1	0.1175
5	8.072	VV	0.0292	2.27995	9.58790e-1	0.2602
6	8.087	VV	0.0273	1.88924	8.55764e-1	0.2156

Totals : 876.25330 293.68758

=====  
\*\*\* End of Report \*\*\*