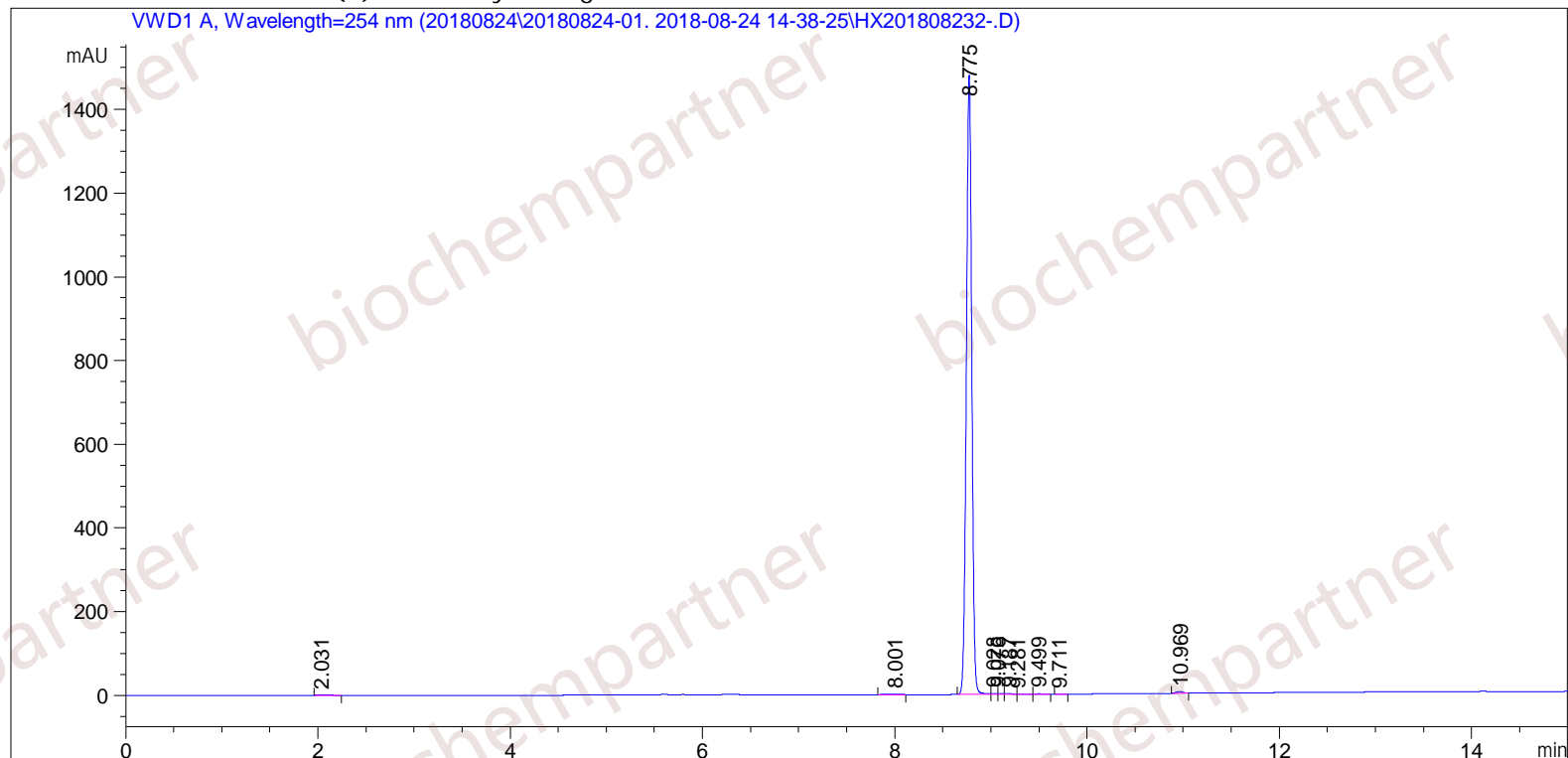


Sample Name: M-8-24-8

=====

Acq. Operator	: SYSTEM	Seq. Line	: 3
Acq. Instrument	: Agilent HPLC	Location	: 71
Injection Date	: 8/24/2018 3:25:21 PM	Inj	: 1
		Inj Volume	: 5.000 µl
Different Inj Volume from Sample Entry!		Actual Inj Volume	: 0.700 µl
Acq. Method	: C:\Chem32\1\Data\20180824\20180824-01. 2018-08-24 14-38-25\5-(10)-100(5)-1-40-254.M		
Last changed	: 8/24/2018 2:38:25 PM by SYSTEM		
Analysis Method	: C:\Chem32\1\Data\20180824\20180824-01. 2018-08-24 14-38-25\5-(10)-100(5)-1-40-254.M (Sequence Method)		
Last changed	: 8/24/2018 5:08:03 PM by SYSTEM (modified after loading)		

Additional Info : Peak(s) manually integrated



=====
Area Percent Report
=====

Sorted By : Signal
Multiplier : 1.0000
Dilution : 1.0000
Use Multiplier & Dilution Factor with ISTDs

Signal 1: VWD1 A, Wavelength=254 nm

Sample Name: M-8-24-8

Peak #	RetTime [min]	Type	Width [min]	Area [mAU*s]	Height [mAU]	Area %
1	2.031	MF	0.1196	10.29134	1.43446	0.1744
2	8.001	MM	0.1570	11.20095	1.18895	0.1899
3	8.775	MF	0.0656	5829.12842	1481.19226	98.8094
4	9.028	MF	0.0677	6.09830	1.50207	0.1034
5	9.076	FM	0.0607	4.40710	1.20933	0.0747
6	9.187	FM	0.0972	7.62976	1.30868	0.1293
7	9.281	FM	0.1253	4.81266	6.40097e-1	0.0816
8	9.499	FM	0.1027	4.08103	6.62537e-1	0.0692
9	9.711	MM	0.0722	1.55190	3.58463e-1	0.0263
10	10.969	MM	0.0803	20.16264	4.18617	0.3418

Totals : 5899.36410 1493.68303

=====
*** End of Report ***