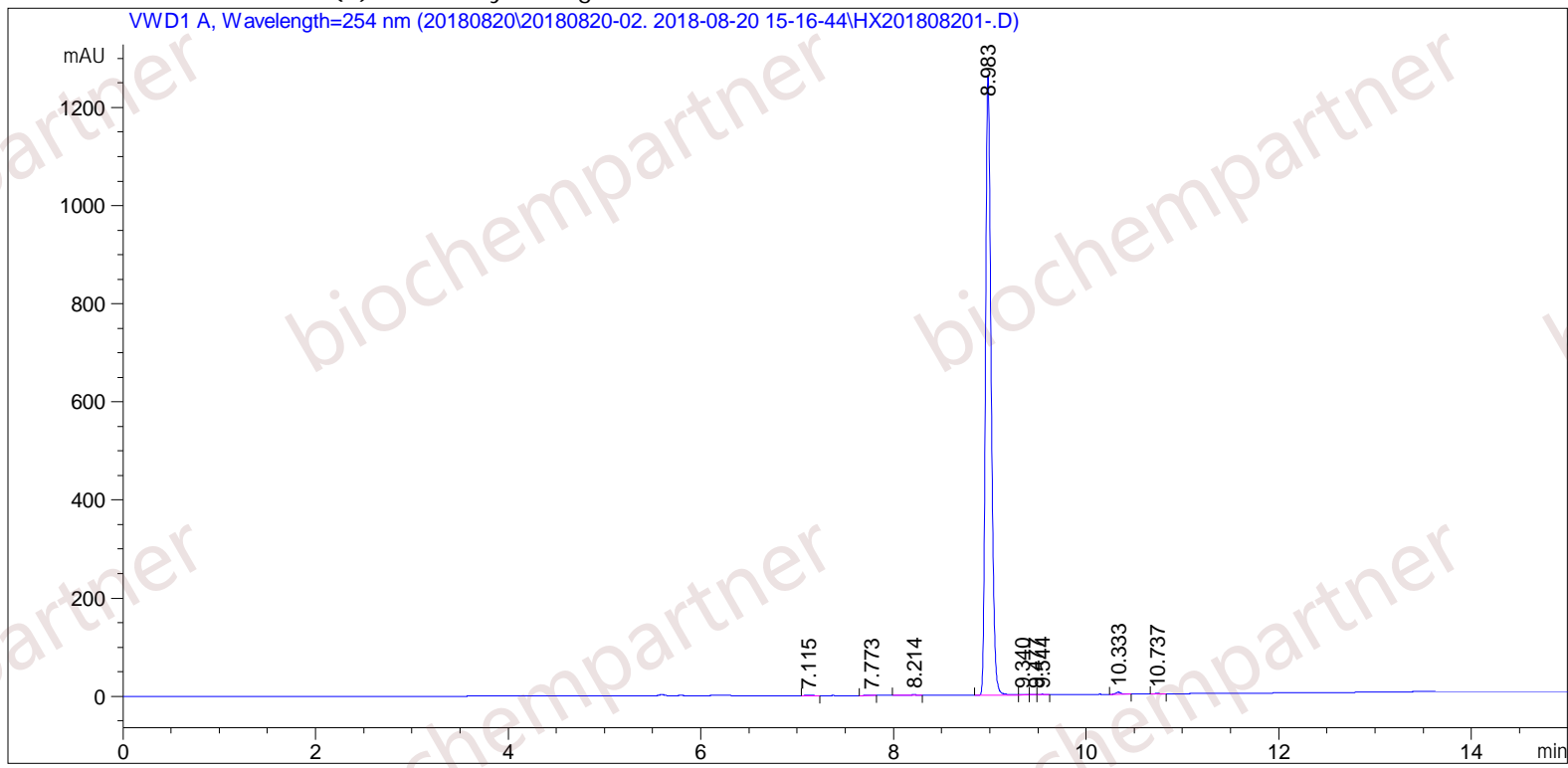


Sample Name: M-8-20-40

=====

Acq. Operator	: SYSTEM	Seq. Line	: 3
Acq. Instrument	: Agilent HPLC	Location	: 50
Injection Date	: 8/20/2018 4:03:59 PM	Inj	: 1
		Inj Volume	: 5.000 µl
Different Inj Volume from Sample Entry!		Actual Inj Volume	: 0.800 µl
Acq. Method	: C:\Chem32\1\Data\20180820\20180820-02. 2018-08-20 15-16-44\5-(10)-100(5)-1-40-254.M		
Last changed	: 8/20/2018 3:16:44 PM by SYSTEM		
Analysis Method	: C:\Chem32\1\Data\20180820\20180820-02. 2018-08-20 15-16-44\5-(10)-100(5)-1-40-254.M (Sequence Method)		
Last changed	: 8/20/2018 5:44:26 PM by SYSTEM (modified after loading)		
Additional Info : Peak(s) manually integrated			



=====
Area Percent Report
=====

Sorted By : Signal
Multiplier : 1.0000
Dilution : 1.0000
Use Multiplier & Dilution Factor with ISTDs

Signal 1: VWD1 A, Wavelength=254 nm

Peak #	RetTime [min]	Type	Width [min]	Area [mAU*s]	Height [mAU]	Area %
1	7.115	BB	0.0619	5.72307	1.36566	0.1097
2	7.773	MF	0.0606	2.67044	7.34385e-1	0.0512
3	8.214	VB R	0.0545	5.62662	1.41783	0.1078
4	8.983	MF	0.0681	5171.48389	1264.98792	99.1153
5	9.340	FM	0.0983	3.33808	5.65687e-1	0.0640
6	9.477	FM	0.0686	2.41107	5.85695e-1	0.0462
7	9.544	FM	0.0774	5.45401	1.17391	0.1045
8	10.333	BB	0.0572	15.94663	4.30746	0.3056
9	10.737	MM	0.0636	4.99076	1.30834	0.0957

Totals : 5217.64457 1276.44689

=====
 *** End of Report ***