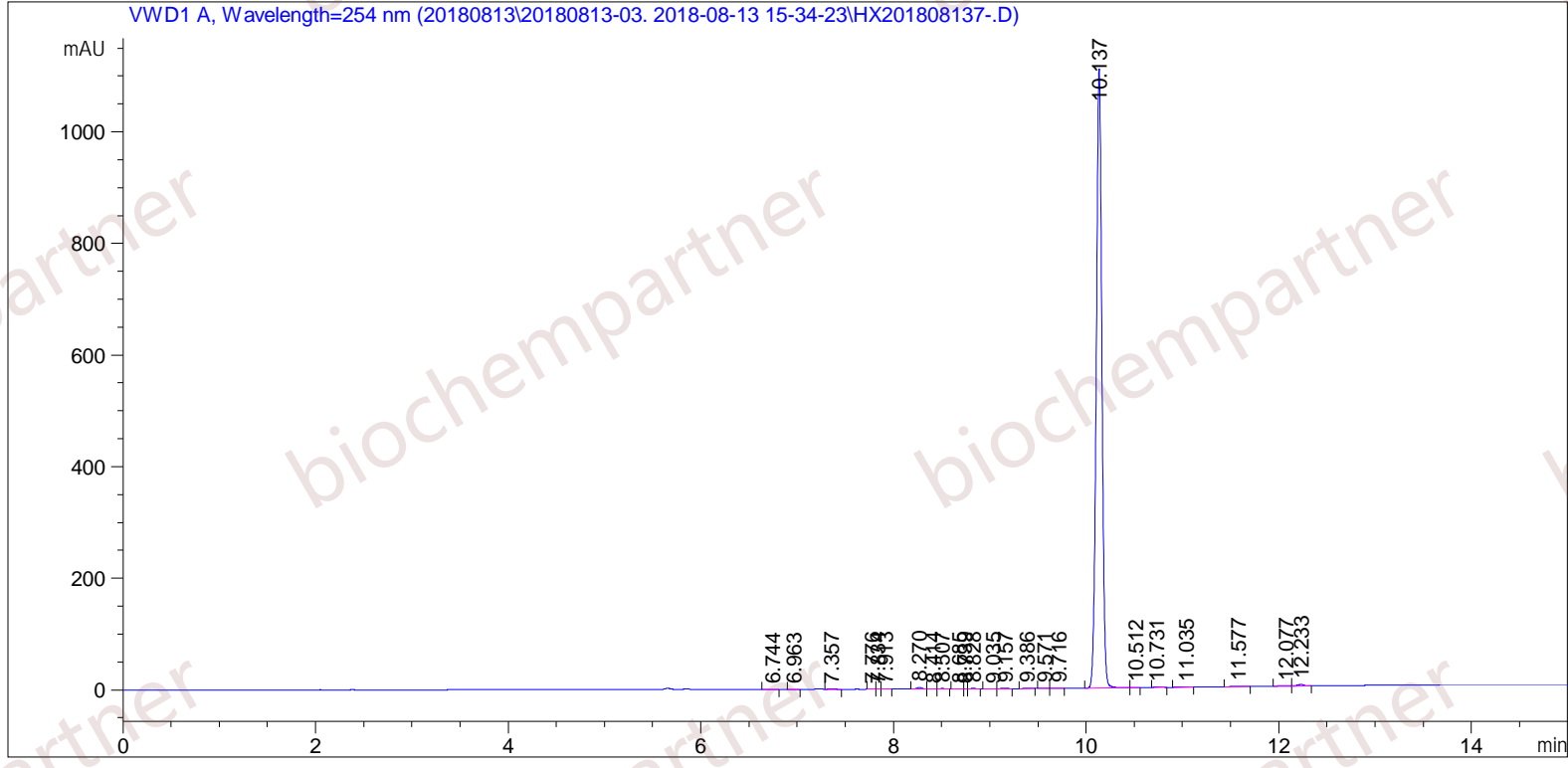


Sample Name: M-8-13-31

```

=====
Acq. Operator   : SYSTEM                               Seq. Line :    5
                                                    Location  :   28
Injection Date  : 8/13/2018 5:05:09 PM                Inj       :    1
Acq. Method    : 5-(10)-100(5)-1-40-254.M
Analysis Method: C:\Chem32\1\Data\20180813\20180813-03. 2018-08-13 15-34-23\5-(10)-100(5)-1-40-
                254.M (Sequence Method)
Last changed   : 8/14/2018 10:56:51 AM by SYSTEM
                (modified after loading)
Additional Info : Peak(s) manually integrated
    
```



Area Percent Report

```

Sorted By      : Signal
Multiplier     : 1.0000
Dilution       : 1.0000
Use Multiplier & Dilution Factor with ISTDs
    
```

Signal 1: VWD1 A, Wavelength=254 nm

Peak #	RetTime [min]	Type	Width [min]	Area [mAU*s]	Height [mAU]	Area %
1	6.744	BB	0.0696	7.31827e-1	1.53473e-1	0.0160
2	6.963	BB	0.0524	2.50709e-1	7.41976e-2	5.483e-3
3	7.357	MM	0.0744	1.99734	4.47676e-1	0.0437
4	7.776	MF	0.0619	1.62609	4.37955e-1	0.0356
5	7.834	FM	0.0500	7.88836e-1	2.62711e-1	0.0173

Sample Name: M-8-13-31

Peak #	RetTime [min]	Type	Width [min]	Area [mAU*s]	Height [mAU]	Area %
6	7.913	FM	0.0684	1.32056	3.21773e-1	0.0289
7	8.270	MF	0.0648	9.83078	2.52951	0.2150
8	8.414	MF	0.0818	1.38406	2.82162e-1	0.0303
9	8.507	FM	0.0630	2.99322	7.91975e-1	0.0655
10	8.685	MF	0.0755	7.35909e-1	1.62403e-1	0.0161
11	8.739	FM	0.0348	3.11326e-1	1.49120e-1	6.809e-3
12	8.828	FM	0.0612	2.62158	7.13668e-1	0.0573
13	9.035	MF	0.0808	1.50818	3.11107e-1	0.0330
14	9.157	FM	0.0752	3.87909	8.60081e-1	0.0848
15	9.386	MM	0.0774	9.58920e-1	2.06559e-1	0.0210
16	9.571	MF	0.0733	2.06837e-1	4.70513e-2	4.523e-3
17	9.716	FM	0.0848	8.47383e-1	1.66453e-1	0.0185
18	10.137	MF	0.0678	4516.23926	1110.36584	98.7685
19	10.512	FM	0.0806	9.17726e-1	1.89683e-1	0.0201
20	10.731	MM	0.0710	2.06159	4.84096e-1	0.0451
21	11.035	BB	0.0960	2.05946	3.48030e-1	0.0450
22	11.577	MM	0.1250	2.13393	2.84584e-1	0.0467
23	12.077	MF	0.0900	4.93902	9.14150e-1	0.1080
24	12.233	FM	0.0754	12.20542	2.69842	0.2669

Totals : 4572.54905 1123.20269

=====
*** End of Report ***