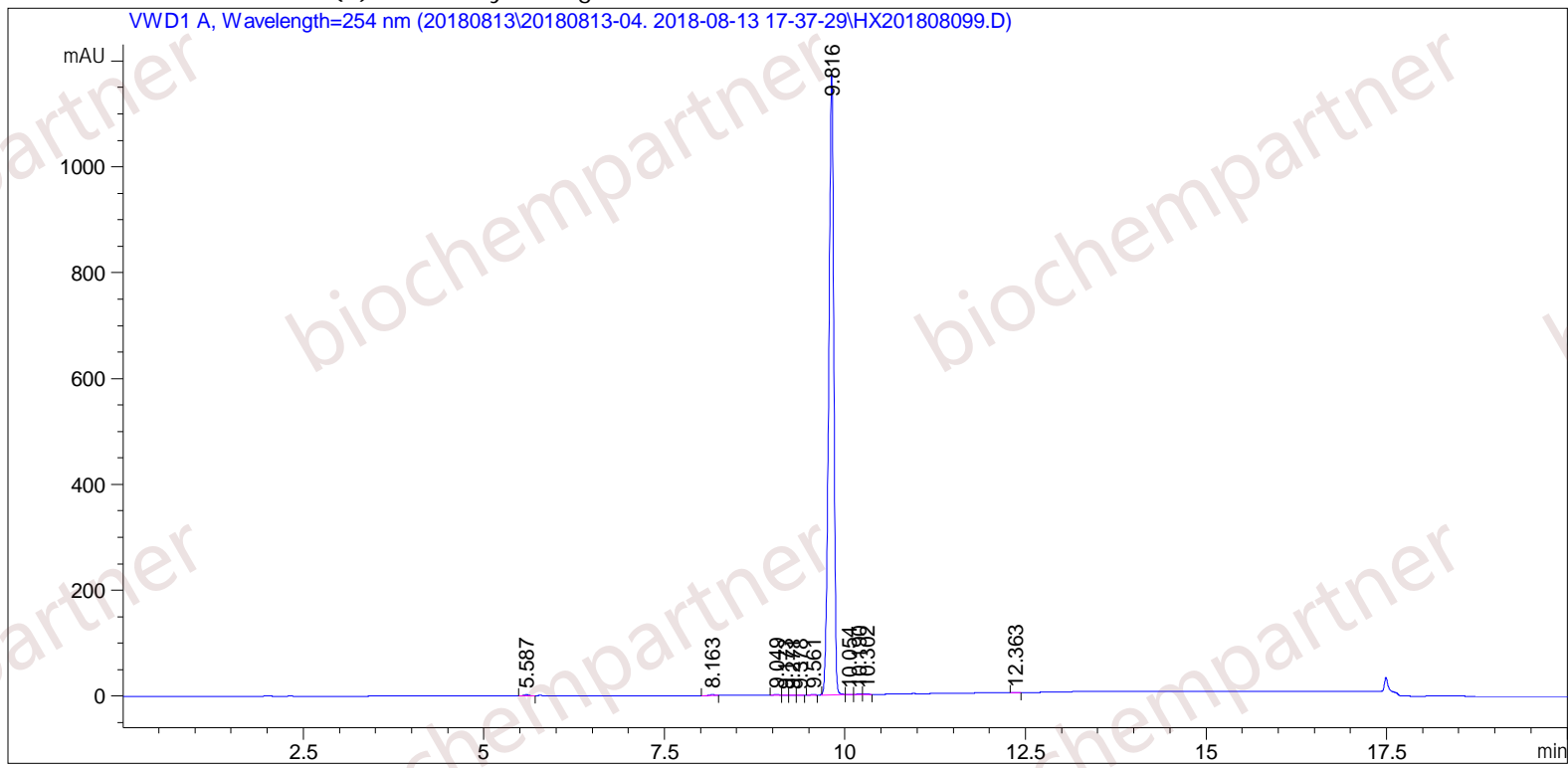


Sample Name: M-8-13-30

```

=====
Acq. Operator   : SYSTEM                               Seq. Line :    1
Acq. Instrument : Agilent HPLC                         Location  :   27
Injection Date  : 8/13/2018 5:40:46 PM                Inj       :    1
                                                    Inj Volume: 5.000 µl
Different Inj Volume from Sample Entry! Actual Inj Volume : 1.200 µl
Acq. Method     : C:\Chem32\1\Data\20180813\20180813-04. 2018-08-13 17-37-29\5-(10)-100(5)-1-40-254.M
Last changed    : 8/13/2018 5:37:29 PM by SYSTEM
Analysis Method : C:\Chem32\1\Data\20180813\20180813-04. 2018-08-13 17-37-29\5-(10)-100(5)-1-40-254.M (Sequence Method)
Last changed    : 8/14/2018 10:59:15 AM by SYSTEM
                (modified after loading)
Additional Info : Peak(s) manually integrated
  
```



```

=====
                          Area Percent Report
=====
  
```

```

Sorted By      :      Signal
Multiplier    :      1.0000
Dilution      :      1.0000
Use Multiplier & Dilution Factor with ISTDs
  
```

Signal 1: VWD1 A, Wavelength=254 nm

Peak #	RetTime [min]	Type	Width [min]	Area [mAU*s]	Height [mAU]	Area %
1	5.587	BV	0.0833	12.45246	2.37124	0.2176
2	8.163	VB R	0.0579	8.03473	2.13386	0.1404
3	9.049	MF	0.0756	8.48647	1.86969	0.1483
4	9.173	FM	0.0751	1.76808	3.92233e-1	0.0309
5	9.271	FM	0.0783	1.35382	2.88071e-1	0.0237
6	9.378	FM	0.0690	1.13960	2.75129e-1	0.0199
7	9.561	MM	0.0745	2.72275	6.09349e-1	0.0476
8	9.816	MF	0.0806	5673.98340	1172.55701	99.1449
9	10.054	FM	0.0895	3.63639	6.76918e-1	0.0635
10	10.190	FM	0.0909	3.91757	7.18676e-1	0.0685
11	10.302	FM	0.0760	4.38108	9.61301e-1	0.0766
12	12.363	MF	0.0928	1.04337	1.87453e-1	0.0182

Totals : 5722.91971 1183.04093

=====
*** End of Report ***