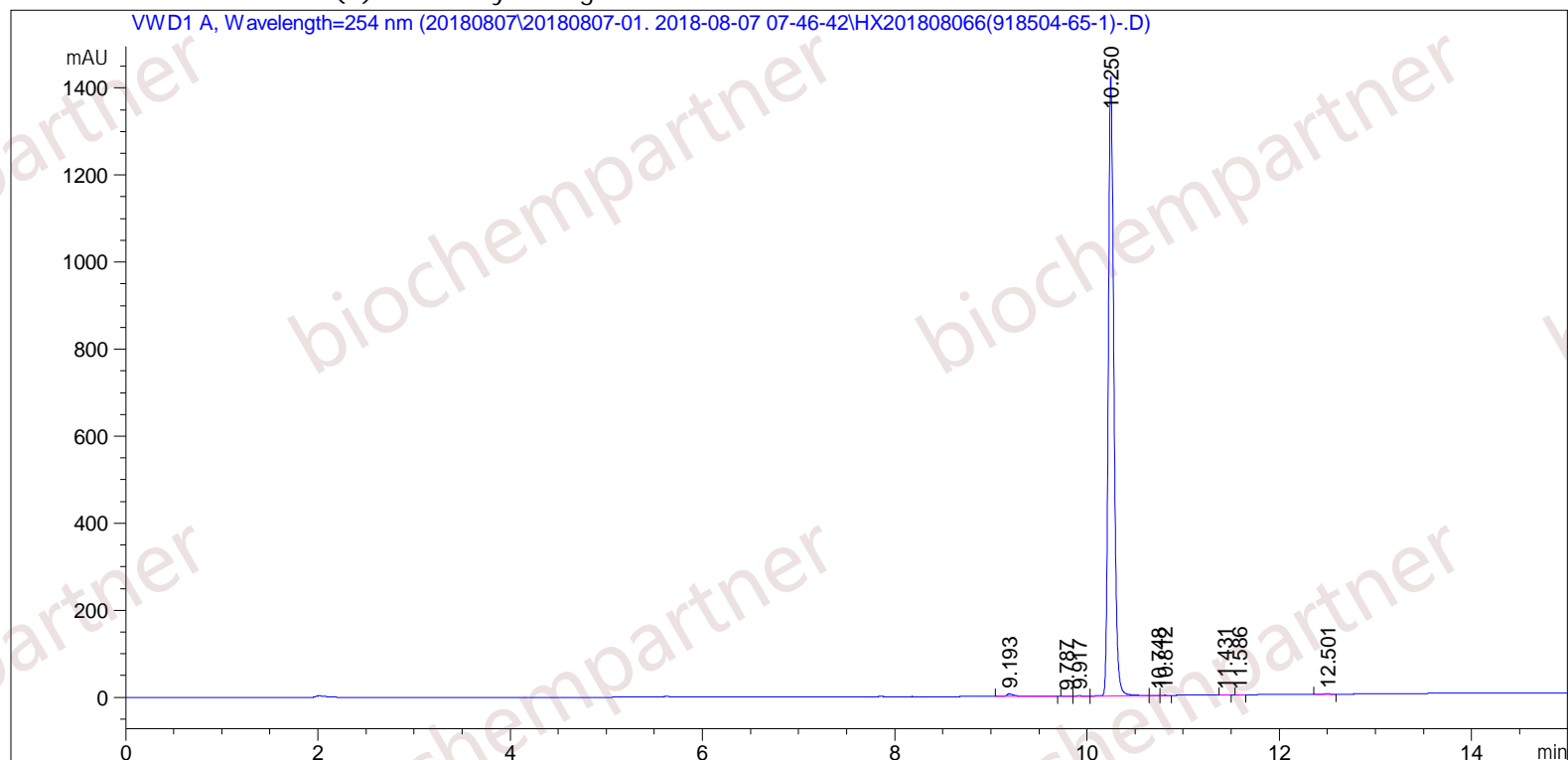


=====

Acq. Operator	: SYSTEM	Seq. Line	: 11
Acq. Instrument	: Agilent HPLC	Location	: 5
Injection Date	: 8/7/2018 11:31:32 AM	Inj	: 1
		Inj Volume	: 5.000 µl
Different Inj Volume from Sample Entry!		Actual Inj Volume	: 1.000 µl
Acq. Method	: C:\Chem32\1\Data\20180807\20180807-01. 2018-08-07 07-46-42\5-(10)-100(5)-1-40-254.M		
Last changed	: 8/7/2018 8:30:29 AM by SYSTEM		
Analysis Method	: C:\Chem32\1\Data\20180807\20180807-01. 2018-08-07 07-46-42\5-(10)-100(5)-1-40-254.M (Sequence Method)		
Last changed	: 8/7/2018 1:15:16 PM by SYSTEM (modified after loading)		

Additional Info : Peak(s) manually integrated



=====
Area Percent Report
=====

Sorted By	:	Signal
Multiplier	:	1.0000
Dilution	:	1.0000

Use Multiplier & Dilution Factor with ISTDs

Signal 1: VWD1 A, Wavelength=254 nm

Peak #	RetTime [min]	Type	Width [min]	Area [mAU*s]	Height [mAU]	Area %
1	9.193	MM	0.0931	32.72321	5.85791	0.5905
2	9.787	MF	0.0933	1.20327	2.14875e-1	0.0217
3	9.917	FM	0.0852	3.13139	6.12442e-1	0.0565
4	10.250	MF	0.0643	5494.75195	1424.61072	99.1531
5	10.748	MF	0.0926	1.25343	2.25635e-1	0.0226
6	10.812	FM	0.0731	1.35400	3.08656e-1	0.0244
7	11.431	MM	0.0660	7.60613e-1	1.92055e-1	0.0137
8	11.586	MM	0.0592	4.93467e-1	1.38992e-1	8.905e-3
9	12.501	MM	0.0729	6.01328	1.37460	0.1085

Totals : 5541.68461 1433.53588

=====
*** End of Report ***