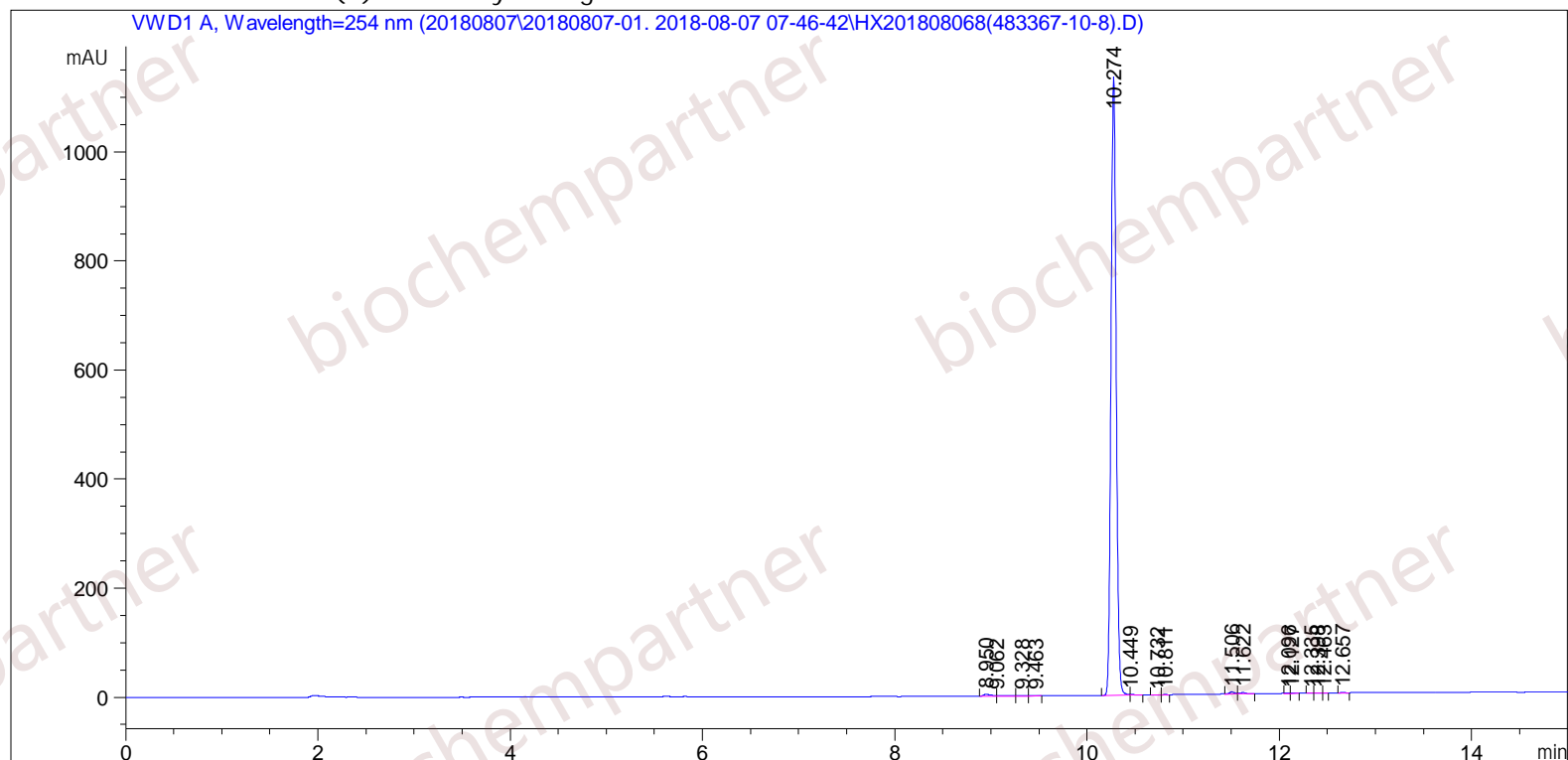


=====

Acq. Operator	: SYSTEM	Seq. Line	: 9
Acq. Instrument	: Agilent HPLC	Location	: 6
Injection Date	: 8/7/2018 10:48:48 AM	Inj	: 1
		Inj Volume	: 5.000 µl
Different Inj Volume from Sample Entry! Actual Inj Volume : 2.000 µl			
Acq. Method	: C:\Chem32\1\Data\20180807\20180807-01. 2018-08-07 07-46-42\5-(10)-100(5)-1-40-254.M		
Last changed	: 8/7/2018 8:30:29 AM by SYSTEM		
Analysis Method	: C:\Chem32\1\Data\20180807\20180807-01. 2018-08-07 07-46-42\5-(10)-100(5)-1-40-254.M (Sequence Method)		
Last changed	: 8/7/2018 1:57:34 PM by SYSTEM (modified after loading)		
Additional Info : Peak(s) manually integrated			



=====
Area Percent Report
=====

Sorted By	:	Signal
Multiplier	:	1.0000
Dilution	:	1.0000

Use Multiplier & Dilution Factor with ISTDs

Signal 1: VWD1 A, Wavelength=254 nm

Peak #	RetTime [min]	Type	Width [min]	Area [mAU*s]	Height [mAU]	Area %
1	8.950	FM	0.1007	21.23914	3.51690	0.5110
2	9.062	FM	0.1107	7.80514	1.17498	0.1878
3	9.328	FM	0.0735	4.38585	9.94970e-1	0.1055
4	9.463	FM	0.0853	1.94359	3.79730e-1	0.0468
5	10.274	MF	0.0599	4080.48633	1135.46423	98.1644
6	10.449	FM	0.0552	3.71100	1.12072	0.0893
7	10.732	MF	0.0729	8.31242e-1	1.89962e-1	0.0200
8	10.811	FM	0.0626	1.09738	2.91969e-1	0.0264
9	11.506	FM	0.0657	14.60799	3.70410	0.3514
10	11.622	VB	0.0649	10.08253	2.26475	0.2426
11	12.096	MF	0.0578	1.92654	5.55674e-1	0.0463
12	12.127	FM	0.0564	1.85637	5.48808e-1	0.0447
13	12.335	MF	0.0556	1.15370	3.45933e-1	0.0278
14	12.398	FM	0.0698	2.40967	5.75009e-1	0.0580
15	12.463	FM	0.0354	9.57758e-1	4.51294e-1	0.0230
16	12.657	FM	0.0747	2.29383	5.11880e-1	0.0552

Totals : 4156.78805 1152.09092

=====
*** End of Report ***