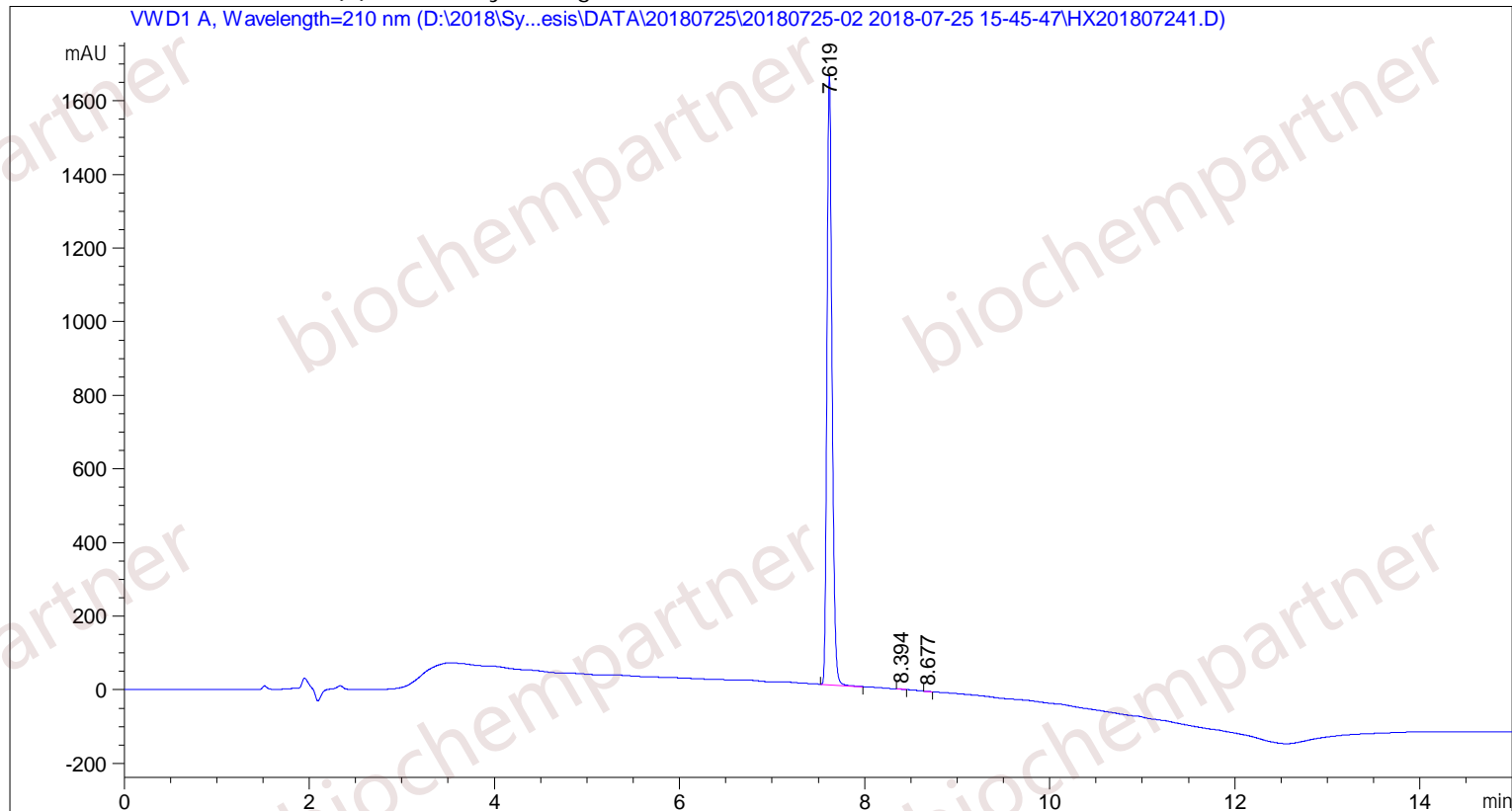


```

=====
Acq. Operator   : SYSTEM                      Seq. Line :    2
Acq. Instrument : Agilent HPLC                 Location  :   32
Injection Date  : 7/25/2018 4:11:24 PM      Inj       :    1
                                           Inj Volume: 5.000 µl
Different Inj Volume from Sample Entry! Actual Inj Volume : 0.800 µl
Acq. Method     : D:\2018\Synthesis\DATA\20180725\20180725-02 2018-07-25 15-45-47\5-(10)-100(
                    5)-1-40-210.M
Last changed    : 7/25/2018 3:45:47 PM by SYSTEM
Analysis Method : D:\2018\Synthesis\DATA\20180725\20180725-02 2018-07-25 15-45-47\5-(10)-100(
                    5)-1-40-210.M (Sequence Method)
Last changed    : 7/25/2018 5:00:40 PM by SYSTEM
                  (modified after loading)
Additional Info : Peak(s) manually integrated
  
```



Area Percent Report

```

Sorted By      :      Signal
Multiplier     :      1.0000
Dilution       :      1.0000
  
```

Use Multiplier & Dilution Factor with ISTDs

Signal 1: VWD1 A, Wavelength=210 nm

Peak #	RetTime [min]	Type	Width [min]	Area [mAU*s]	Height [mAU]	Area %
1	7.619	MM	0.0649	6461.01807	1659.40869	99.9248
2	8.394	MM	0.0723	2.88481	6.64909e-1	0.0446
3	8.677	MM	0.0601	1.97713	5.48725e-1	0.0306

Totals : 6465.88001 1660.62233

=====
*** End of Report ***