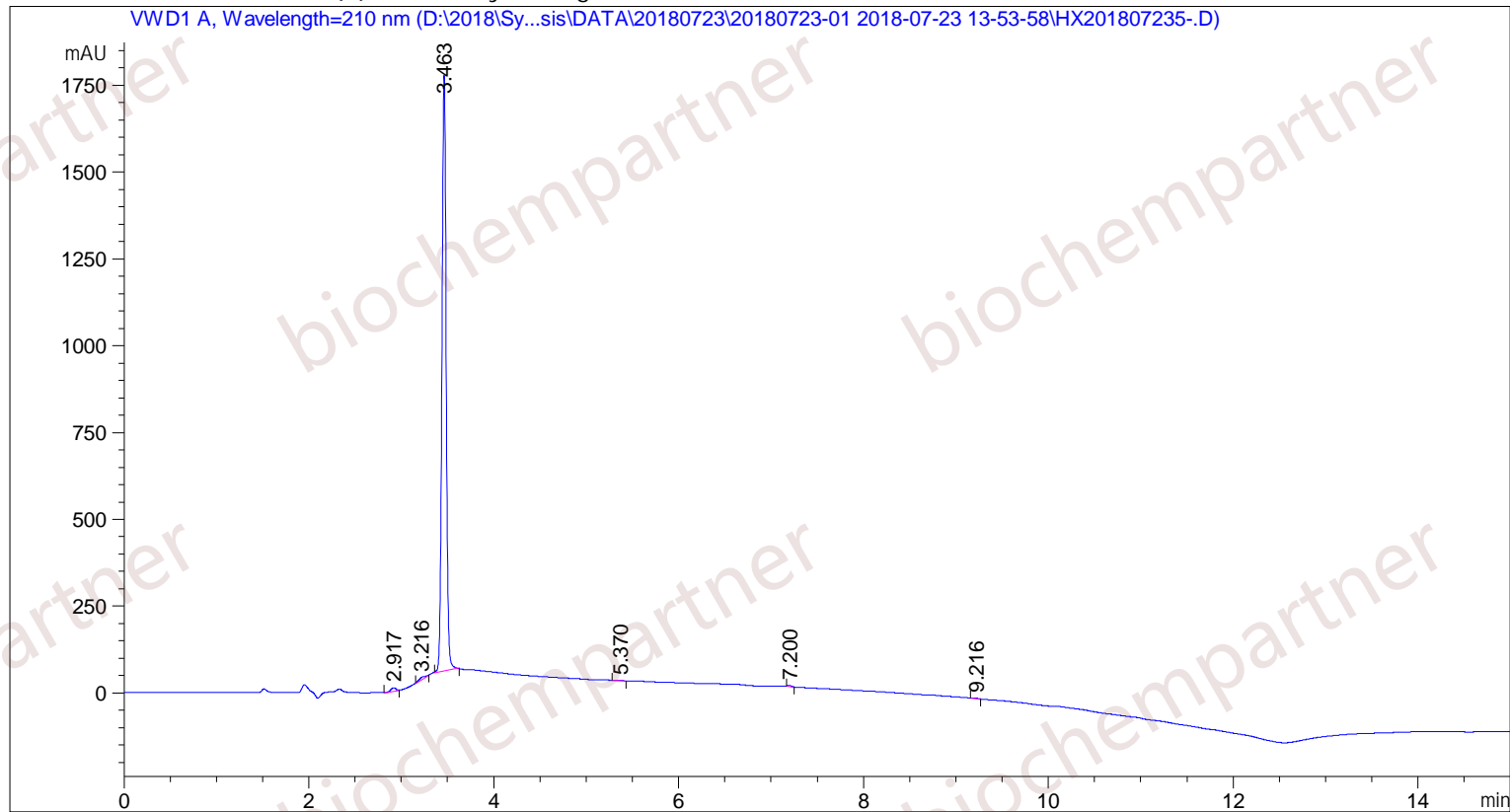


Sample Name: M-7-23-31

```

=====
Acq. Operator   : SYSTEM                               Seq. Line :   12
Acq. Instrument : Agilent HPLC                        Location  :    6
Injection Date  : 7/23/2018 5:52:13 PM                Inj       :    1
                                                    Inj Volume: 5.000 µl
Different Inj Volume from Sample Entry! Actual Inj Volume : 1.000 µl
Acq. Method     : D:\2018\Synthesis\DATA\20180723\20180723-01 2018-07-23 13-53-58\5-(10)-100(
                    5)-1-40-210.M
Last changed    : 7/23/2018 1:53:58 PM by SYSTEM
Analysis Method : D:\2018\Synthesis\DATA\20180723\20180723-01 2018-07-23 13-53-58\5-(10)-100(
                    5)-1-40-210.M (Sequence Method)
Last changed    : 7/23/2018 6:14:24 PM by SYSTEM
                    (modified after loading)
Additional Info : Peak(s) manually integrated
    
```



Area Percent Report

```

Sorted By      :      Signal
Multiplier     :      1.0000
Dilution      :      1.0000
    
```

Use Multiplier & Dilution Factor with ISTDs

Signal 1: VWD1 A, Wavelength=210 nm

Peak #	RetTime [min]	Type	Width [min]	Area [mAU*s]	Height [mAU]	Area %
1	2.917	MM	0.0635	39.66467	10.40919	0.7055
2	3.216	MM	0.0804	35.67946	7.39497	0.6346
3	3.463	MM	0.0536	5521.69824	1717.83032	98.2116
4	5.370	MM	0.0879	8.96099	1.69889	0.1594

Peak #	RetTime [min]	Type	Width [min]	Area [mAU*s]	Height [mAU]	Area %
5	7.200	MM	0.0557	11.12392	3.33060	0.1979
6	9.216	MM	0.0615	5.11948	1.38727	0.0911

Totals : 5622.24675 1742.05124

=====  
\*\*\* End of Report \*\*\*