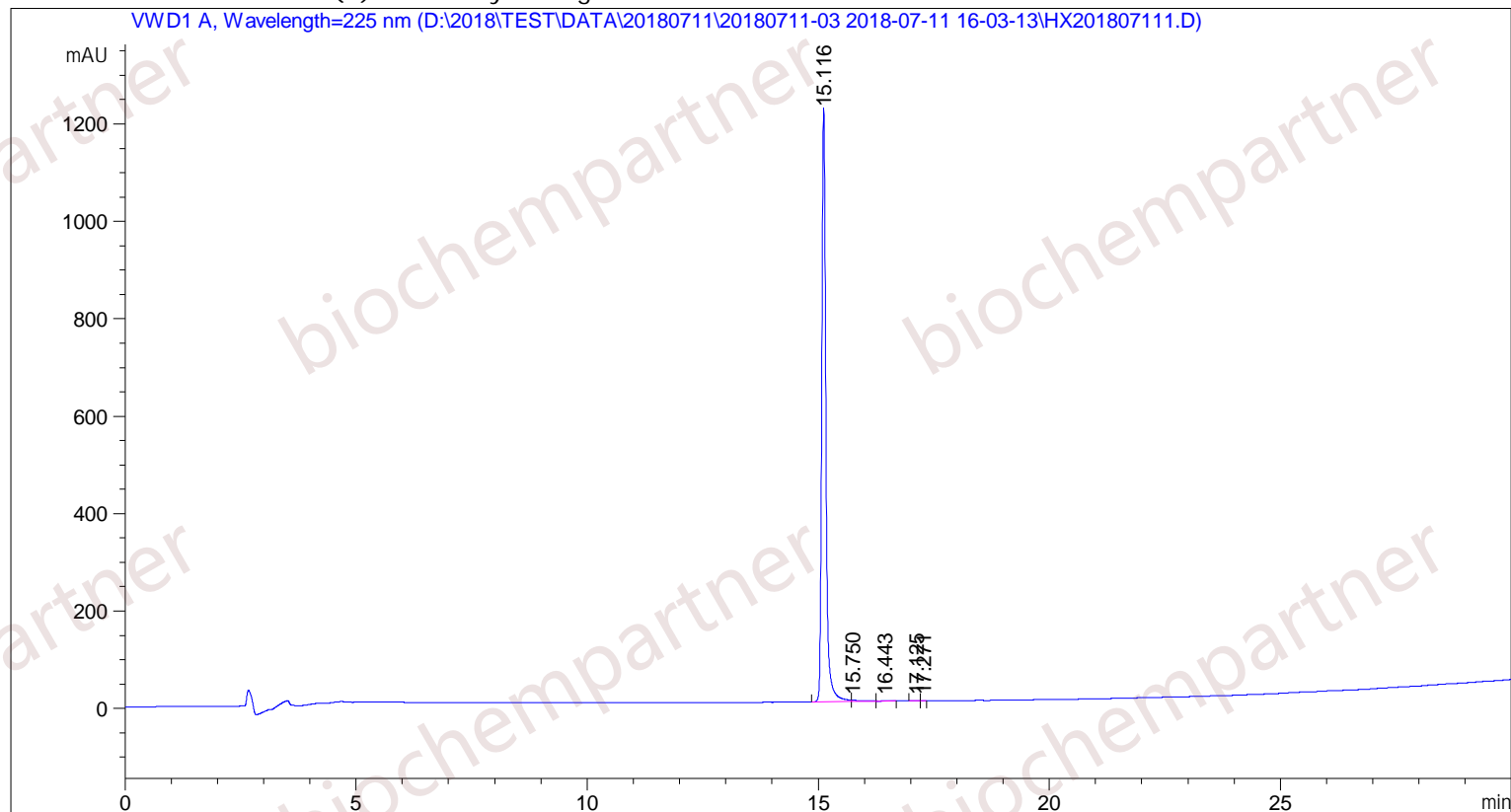


Sample Name: M-7-11-7

```

=====
Acq. Operator   : SYSTEM                      Seq. Line :    2
Acq. Instrument : Agilent HPLC                Location  :   15
Injection Date  : 7/11/2018 4:42:54 PM      Inj       :    1
                                           Inj Volume: 5.000 µl
Different Inj Volume from Sample Entry! Actual Inj Volume : 9.000 µl
Acq. Method     : D:\2018\TEST\DATA\20180711\20180711-03 2018-07-11 16-03-13\5-(30)-100-225-40-1.M
Last changed    : 7/11/2018 4:03:13 PM by SYSTEM
Analysis Method : D:\2018\TEST\DATA\20180711\20180711-03 2018-07-11 16-03-13\5-(30)-100-225-40-1.M (Sequence Method)
Last changed    : 7/12/2018 9:06:19 AM by SYSTEM
                 (modified after loading)
Additional Info : Peak(s) manually integrated
=====

```



```

=====
                          Area Percent Report
=====

```

```

Sorted By      :      Signal
Multiplier     :      1.0000
Dilution       :      1.0000
Use Multiplier & Dilution Factor with ISTDs

```

Signal 1: VWD1 A, Wavelength=225 nm

Peak #	RetTime [min]	Type	Width [min]	Area [mAU*s]	Height [mAU]	Area %
1	15.116	MF	0.1037	7591.96875	1220.33350	99.2022
2	15.750	FM	0.2646	42.84827	2.69906	0.5599
3	16.443	FM	0.1860	12.81223	1.14775	0.1674
4	17.125	MF	0.1082	4.25826	6.56113e-1	0.0556

Sample Name: M-7-11-7

Peak #	RetTime [min]	Type	Width [min]	Area [mAU*s]	Height [mAU]	Area %
5	17.271	FM	0.0842	1.13388	2.24343e-1	0.0148

Totals : 7653.02138 1225.06076

=====
*** End of Report ***